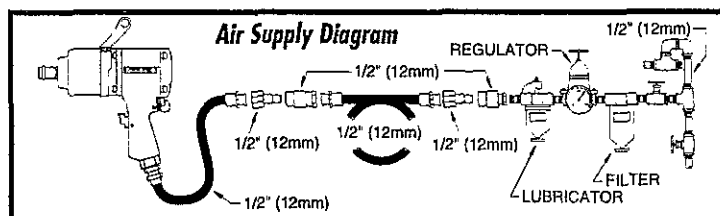
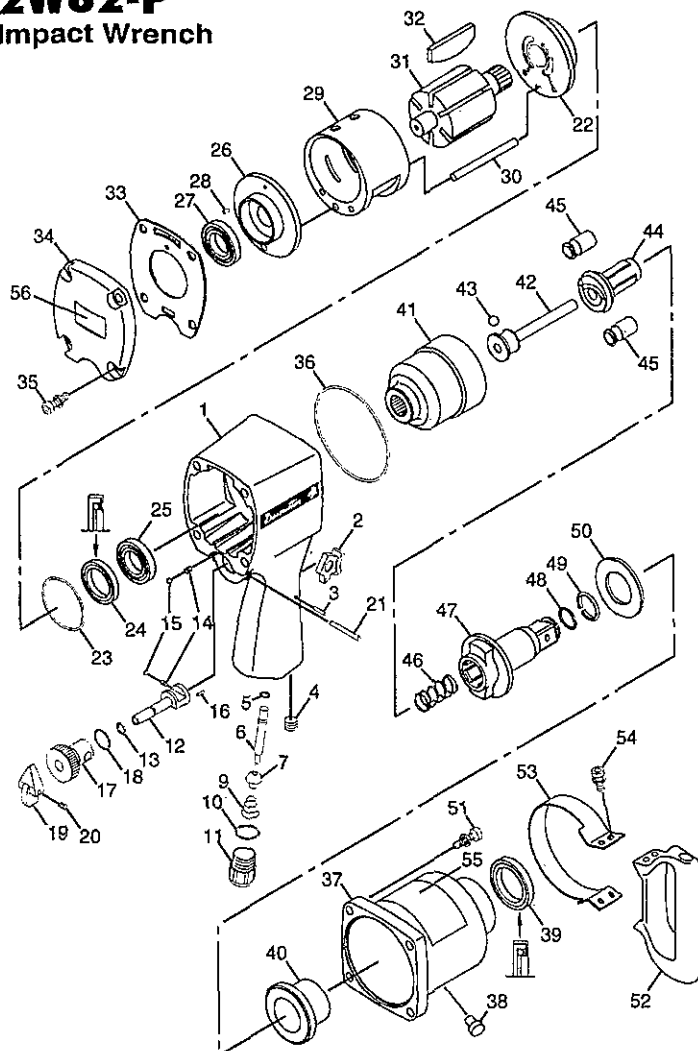


2W82-P Impact Wrench



Index No.	Part No.	Description	No. Req'd.
1	426073	Housing-Motor	1
2	412493	Trigger	1
3	414283	Pin-Roll	1
4	423373	Plug-Pipe (.25 NPT)	1
5	414263	O-Ring (W1516-1)	1
6	425953	Pin-Valve	1
7	425963	Ball-Valve	1
9	425973	Spring-Throttle Valve	1
10	425983	O-Ring (W1516-14)	1
11	425883	Bushing-Air Inlet	1
12	413983	Valve-Reverse	1
13	414233	O-Ring (W1516-5)	1
14	414303	Spring	2
15	417093	Ball-Steel (4mm dia.)	2
16	416883	Pin-Roll (2.5 x 8)	1
17	414593	Regulator-Air	1
18	416923	O-Ring (W1516-12)	1
19	414173	Lever-Reverse	1
20	417663	Screw-Set	1
21	419263	Pin-Roll (4 x 40)	1
22	414443	Plate-Front End	1
23	414433	O-Ring (1517-6)	1
24	414423	Seal-Oil	1
25	414193	Bearing-Ball (6205z)	1
26	414453	Plate-Rear End	1
27	412393	Bearing-Ball (6204)	1
28	414503	Pin-Roll (4 x 8)	1
29	414393	Liner	1
30	425893	Pin-Guide	1
31	413893	Rotor	1
32	414583	Set-Rotor Blade (6)	1
33	414403	Gasket-Back Cover	1
34	426083	Cover-Motor Housing	1
35	426013	Screw (M8-1.25P) w/washer	4
36	414243	O-Ring (MS9241-154)	1
37	441003	Housing-Clutch	1
38	61083	Plug-Pipe	1
39	414323	Seal-Oil	1
40	413973	Bushing-Clutch	1
41	414733	Cage-Hammer	1
42	413923	Shaft-Pilot	1
43	419063	Ball-Steel (.5" dia.)	1
44	413903	Cam-Hammer	1
45	413883	Pin-Hammer	2
46	413933	Spring-Clutch	1
47	413913	Shank-Anvil (Incl: Index Nos. 48 & 49)	1
48	413943	O-Ring (1516-13)	1
49	414573	Retainer-Socket	1
50	413953	Spacer-Anvil	1
51	426023	Screw (HXSKTHD M8) w/washer	4
52	426093	Support-Handle	1
53	427013	Band-Support Handle	1
54	425923	Screw-Cap w/Washer	4
	425933	Wrench-Hex (not shown)	1
55	427113	Decal-Safety Warning	1
56	441013	Nameplate	1

Tune-Up Kit

440943 (Incl: Index No's. 5, 7, 10, 13, 18, 23, 24, 32, 33, 36, 39, 48, & 49)

FOR DETAILED INFORMATION ABOUT DESOUTTER LIMITED AIR TOOLS AND EQUIPMENT CONTACT:

Desoutter Ltd.,
Eaton Road,
Hemel Hempstead,
HP2 7DR UK.

Tel: ++ 44 (0) 1442 344 300
Fax: ++ 44 (0) 1442 344 604

Desoutter UK Sales Ltd.,
Eaton Road,
Hemel Hempstead,
HP2 7DR UK.

Tel: 01442 344 300
Fax: 01442 344 600

Desoutter International Sales,
Eaton Road,
Hemel Hempstead,
HP2 7DR UK.

Tel: ++ 44 1442 344 300
Fax: ++ 44 1442 344 602

Desoutter 
Desoutter Limited, HP2 7DR, UK.

PRINTED IN USA
GD/8-99



Desoutter Limited, HP2 7DR. UK.

INSTRUCTION MANUAL

Air Supply Requirements

1. Supply tool with 90 psig (6.2 bar) of clean, dry air. Higher pressure drastically reduces tool life.
2. Connect tool to air line using pipe, hose, and fitting sizes shown in the diagram on page 12.

Lubrication

1. Use an air line lubricator with SAE #10 oil, adjusted to two (2) drops per minute. If an air line lubricator cannot be used, add air motor oil to the inlet once a day.
2. Check clutch oil once each month. Use 3.3 oz. (100 ml) of SAE #30 oil or equivalent.

Operation

This impact wrench is equipped with a regulator to enable adjustment of output power. Turn the regulator knob clockwise for maximum power, counter-clockwise to reduce power.

Noise & Vibration Declaration*

Sound pressure level 97.8 dB(A) in accordance with Pneuop PN8NTC1.2. For sound power, add 10 dB(A).
Vibration value 9.4 m/s², rs. ISO 8662-7.

Maintenance

1. Disassemble and inspect air motor and impacting clutch every three (3) months if the tool is used every day. Replace damaged or worn parts.
2. High wear parts are underlined in the parts list.
3. To keep downtime to a minimum, the following service kits, detailed on page 12, are recommended: 440943 Tune-Up Kit

* These declared values were obtained by laboratory type testing in compliance with the stated standards and are not adequate for use in risk assessments. Values measured in individual work places may be higher than the declared values. The actual exposure values and risk of harm experienced by an individual user are unique and depend upon the way the user works, the workplace and the workstation design, as well as upon the exposure time and the physical condition of the user. We, Desoutter Limited, cannot be held liable for the consequences of using the declared values, instead of values reflecting the actual exposure, in an individual risk assessment in a work place situation over which we have no control.

2W82-P Impact Wrench

1" Square Drive Model "B"

426033 Rev. A

EC DECLARATION OF CONFORMITY

We, Desoutter Limited, HP2 7DR. UK., declare under our sole responsibility that the product to which this declaration relates, is in conformity with the requirements of the Council Directive of June 1989 on the approximation of the laws of the Member States relating to machinery (89/392/EEC).

Machine Name 2W82-P Impact Wrench

Machine Type Assembly Power Tool for Threaded Fasteners - No other use is permitted.

Serial No. Tools with No. 99166B-1999 or higher

Technical Data

1" (25 mm) Sq. Dr.

Bolt size 1" Grade 5

Air pressure 90 psi (6.2 bar)

Torque range 340-1445 ft.-lb. (461-1959 Nm)

Ult. torque 1700 ft.-lb. (2305 Nm)

Free Speed 4400 RPM

Air Consumption (@ free speed) 41 cfm (19.3 l/s)

Harmonized Standards Applied EN292

National Standards Applied ISO 8662-7, Pneuop PN8NTC1.2

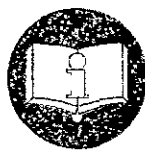
Name And Position Of Issuer C.J. Dudden, Engineering Manager, Desoutter Limited

Signature Of Issuer

Place And Date Of Issue London, England, January 1, 1997

© Copyright 1998, Desoutter, HP2 7DR. UK.

All rights reserved. Any unauthorized use or copying of the contents or part thereof is prohibited. This applies in particular to trademarks, model denominations, part numbers and drawings. Use only authorized parts. Any damage or malfunction caused by the use of unauthorized parts is not covered by Warranty or Product Liability.

**WARNING**

To reduce risk of injury, everyone using, installing, repairing, maintaining, changing accessories on, or working near this tool must read and understand these instructions before performing any such task.

SAFETY INSTRUCTIONS

The goal of Desoutter Limited is to produce tools that help you work safely and efficiently. The most important safety device for this or any tool is YOU. Your care and good judgment are the best protection against injury. All possible hazards cannot be covered here, but we have tried to highlight some of the important ones.

For Additional Safety Information Consult:

Your employer union and/or trade association.

US Department of Labor (OSHA); Council of the European Communities and/or local codes.

"Safety Code For Portable Air Tools" (B186.1) available from: American National Standards Institute, Inc., 11 W. 42nd Street, New York, NY 10036, USA.

"Safety Requirement For Hand-Held Non-Electric Power Tools" available from: European Committee for Standardization, Rue de Stassart 36, 1050 Brussels, Belgium.

Air Supply And Connection Hazards

Air under pressure can cause severe injury.

Always shut off air supply, drain hose of air pressure and disconnect tool from air supply when not in use, before changing accessories or when making repairs.

Never direct air at yourself or anyone else.

Whipping hoses can cause serious injury. Always check for damaged or loose hoses and fittings.

Do not use quick disconnect couplings at tool. See instructions for correct set-up.

Whenever universal twist couplings are used, lock pins must be installed. Do not exceed maximum air pressure of 90 psi (6.2 bar) or as stated on tool nameplate.

Entanglement Hazards

Keep away from rotating drive.

Do not wear jewelry or loose clothing.

Choking can occur if neckwear is not kept away from tool and accessories.

Scalping can occur if hair is not kept away from tool and accessories.

Avoid direct contact with accessories during and after use. Gloves will reduce the risk of cuts or burns.

Use only proper accessory retainers (see parts list). Use deep sockets wherever possible.

Projectile Hazards

Always wear impact-resistant eye and face protection when involved with or near the operation, repair or maintenance of the tool or changing accessories on the tool.

Be sure all others in the area are wearing impact-resistant eye and face protection.

Even small projectiles can injure eyes and cause blindness.

Do not use hand sockets. Use only impact wrench sockets in good condition. Sockets in poor condition or hand sockets used with impact wrenches can shatter.

Always use the simplest hook-up possible. Long, springy extension bars and adapters absorb impact power and could break. Use deep sockets wherever possible.

Never operate the tool off of the work. It may run too fast and cause the accessory to be thrown off the tool.

Workplace Hazards

Slip/Trip/Fall is a major cause of serious injury or death. Beware of excess hose left on the walking or work surface.

High sound levels can cause permanent hearing loss. Use hearing protection as recommended by your employer or OSHA regulation (see 29 CFR part 1910).

Maintain a balanced body position and secure footing.

Be in control of the throttle at all times. Do not get caught between the tool and the work.

Repetitive work motions, awkward positions and exposure to vibration can be harmful to hands and arms. If numbness, tingling, pain or whitening of the skin occurs, stop using the tool and consult a physician.

Avoid inhaling dust or handling debris from work process that can be harmful to your health. Proper breathing protection must be worn when working with materials which produce airborne particles.

Proceed with care in unfamiliar surroundings. Be aware of potential hazards created by your work activity. This tool is not insulated for coming into contact with electric power sources.

Additional Safety Topics

This tool and its accessories must not be modified.

This tool is not recommended for use in explosive atmospheres.

Operators and maintenance personnel must be physically able to handle the bulk, weight and power of the tool.

For tools using the pin and O-ring socket retention system, use the O-ring to securely retain the socket pin.

DO NOT DISCARD - GIVE TO USER