



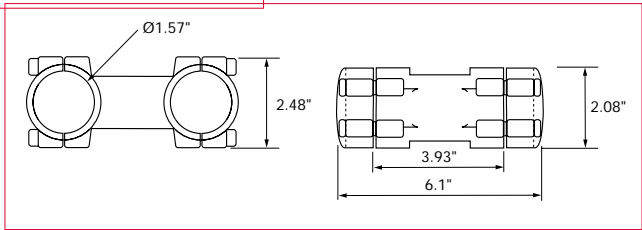
**Lou Zampini & Associates**

2 Douglas Pike, Rt. 7  
Smithfield, RI 02917  
1 800 353 4676  
FAX 1 401 679 0165

AFD205, AFDE200, AFTE270

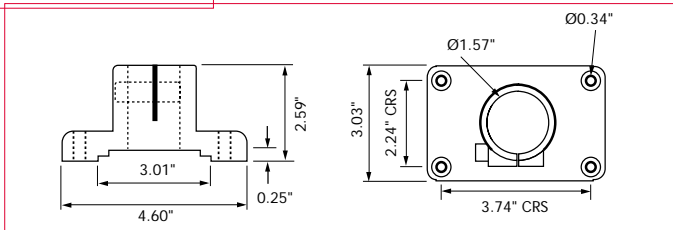
**Parallel Clamp**

Part No. 61832



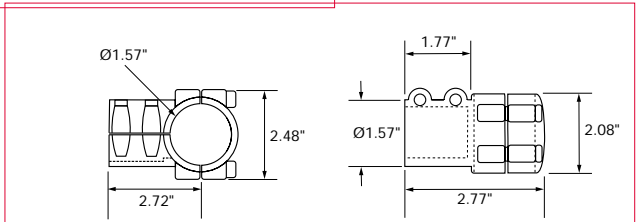
**Base Clamp**

Part No. 61842



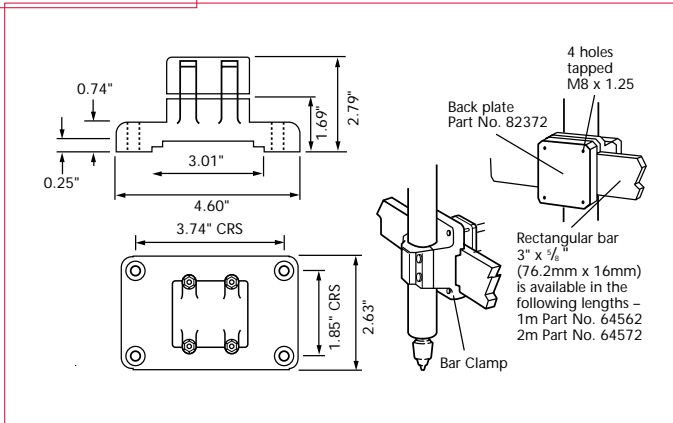
**Right Angle Clamp**

Part No. 61822



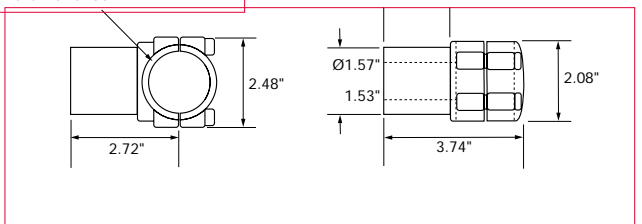
**Bar Clamp**

Part No. 61852



**Swivel Clamp**

Part No. 61802



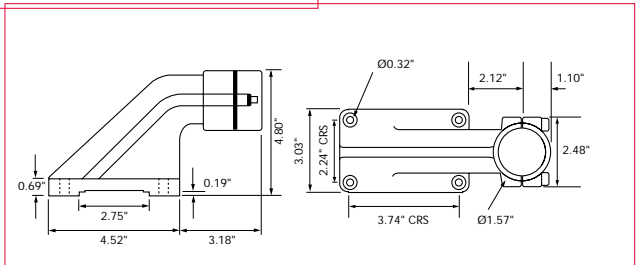
**Mounting Tube**



Tubing is of the same outside diameter as the auto feed unit and is available in the following standard lengths.

**Swan Neck Clamp**

Part No. 61862

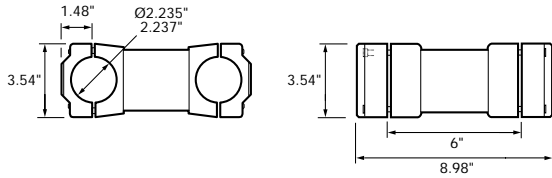


TUBING LENGTH	TUBING Ø	PART NO.
ins	ins	
9		39702
12	1.574/	39722
18	1.575	39732
24		39742
30		39752

AFD415, AFDE400/410, AFTE470/480

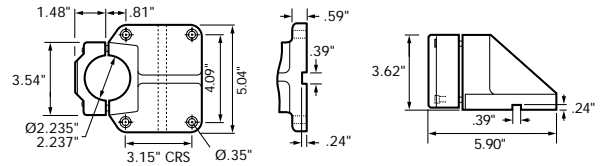
**Parallel Clamp**

Part No. 76352



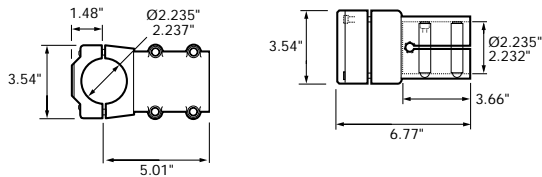
**Base Clamp**

Part No. 76302



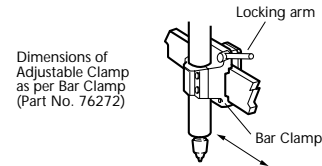
**Right Angle Clamp**

Part No. 76342



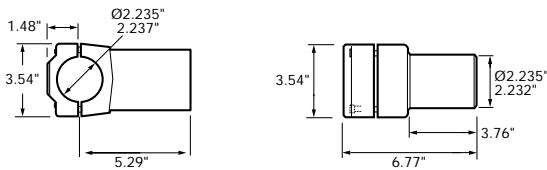
**Adjustable Bar Clamp**

Part No. 97042



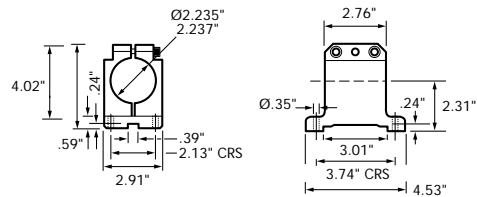
**Swivel Clamp**

Part No. 76332



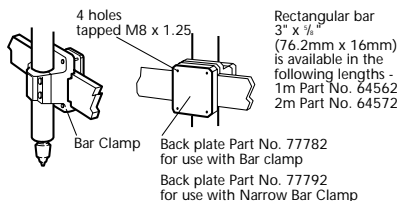
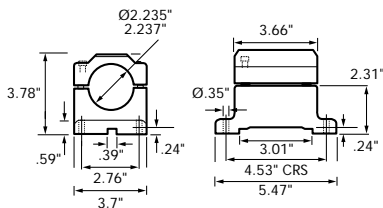
**Narrow Bar Clamp**

Part No. 76292



**Bar Clamp**

Part No. 76272



**Mounting Tube**



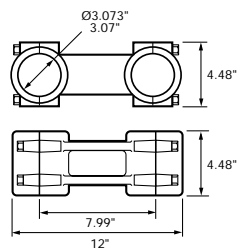
Tubing is of the same outside diameter as the auto feed unit and is available in the following standard lengths.

TUBING LENGTH	TUBING Ø	PART NO.
ins	ins	
9		9452
12	2.225	9462
18	2.233	9472
24		9482
30		9492

## AFD60, AFT60, AFDE600/610/620

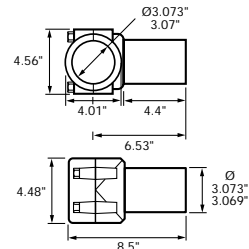
## Parallel Clamp

Part No. 32492



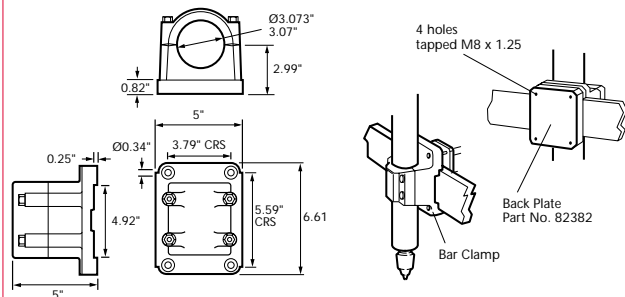
## Swivel Clamp

Part No. 32502



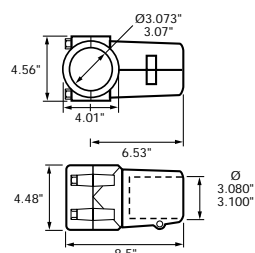
## Bar Clamp

Part No. 32532



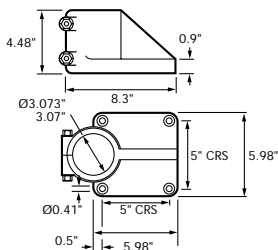
## Right Angle Clamp

Part No. 32522



## Base Clamp

Part No. 32542



## Mounting Tube



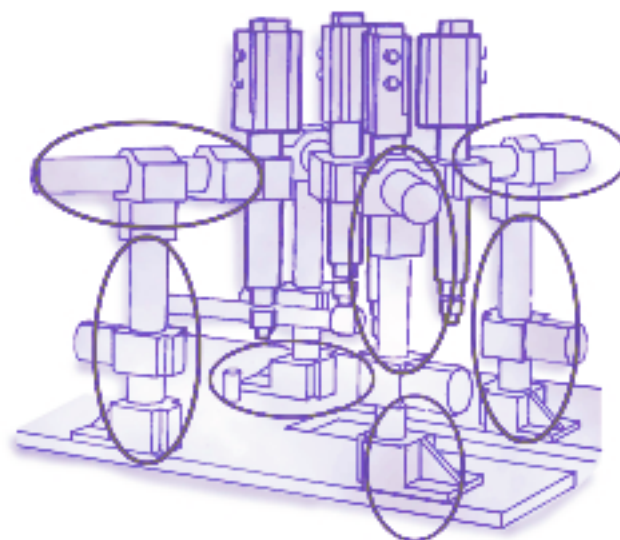
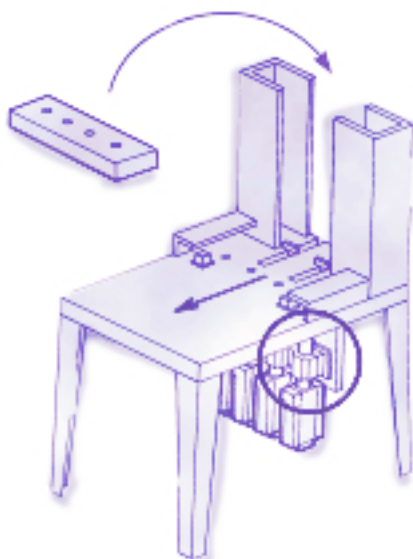
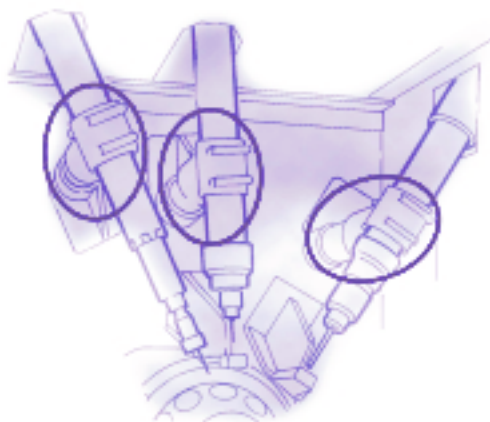
Tubing is of the same outside diameter as the auto feed unit and is available in the following standard lengths.

TUBING LENGTH	TUBING Ø	PART NO.
ins	ins	
24		32562
36	3.069	32572
48		32582

## mounting clamps



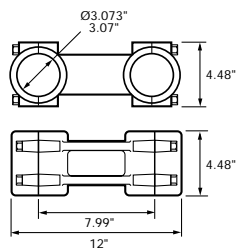
- Extensive range of mounting clamps to allow any orientation of the tool
- All clamps manufactured from aluminium



## AFD60, AFT60, AFDE600/610/620

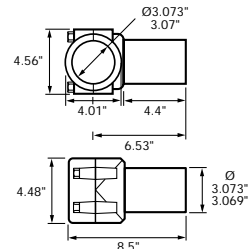
## Parallel Clamp

Part No. 32492



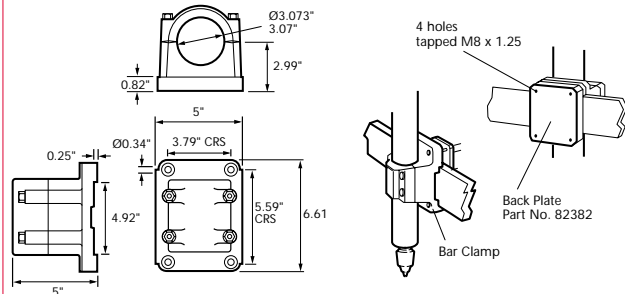
## Swivel Clamp

Part No. 32502



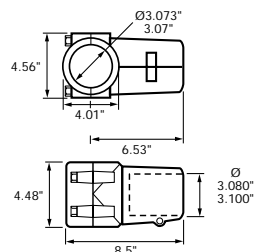
## Bar Clamp

Part No. 32532



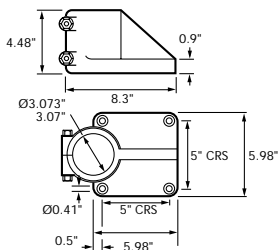
## Right Angle Clamp

Part No. 32522



## Base Clamp

Part No. 32542



## Mounting Tube



Tubing is of the same outside diameter as the auto feed unit and is available in the following standard lengths.

TUBING LENGTH	TUBING Ø	PART NO.
ins	ins	
24	3.069	32562
36		32572
48		32582

## Performance Specifications

Air powered swing clamp with 90° rotation in either left hand or right hand direction followed by a clamping action.

Maximum Clamping Load (90 psi)	250lbs
Minimum Clamping Load (60 psi)	83lbs
Weight	3.5lbs

Swing Clamp Left Hand – Part No. 98592  
Swing Clamp Right Hand – Part No. 97362

## Dimensions

