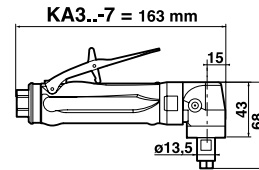
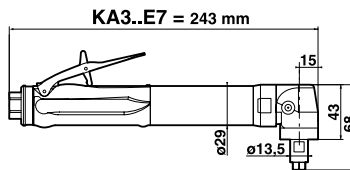
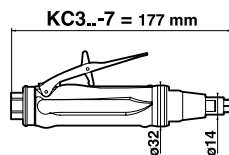
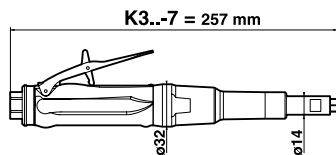


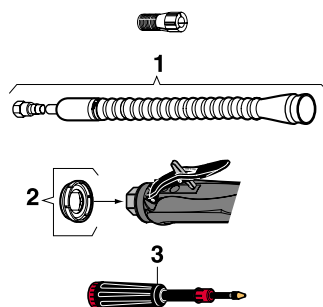
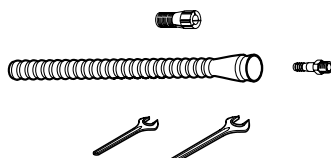
# Accessories



## K3.-7 / KC3.-7 / KA3..E7 / KA3.-7

### ACCESSORIES INCLUDED

	PART NO.
• CNOMO collet $\phi$ 6 mm	615 526 046 0
• Exhaust hose L = 0.8 m (31")	615 875 106 0
• 1/4" air hose nipple for 8 mm ID hose	615 704 019 0
• Flat wrench, 10 mm (25/64")	615 801 002 0
• Flat wrench, 11 mm (7/16")	615 801 003 0



### OPTIONAL ACCESSORIES

ITEM	PART NO.
• CNOMO collet $\phi$ 2.5 mm	615 526 089 0
• CNOMO collet $\phi$ 3 mm	615 526 044 0
• CNOMO collet $\phi$ 3.2 mm (1/8")	615 526 045 0
• CNOMO collet $\phi$ 4 mm (5/32")	615 526 090 0
• CNOMO collet $\phi$ 4.5 mm	615 526 091 0
• CNOMO collet $\phi$ 5 mm	615 526 092 0
• CNOMO collet $\phi$ 6.4 mm (1/4")	615 526 047 0
1 Complete silencer kit	615 396 101 0
2 Clipable silencer	615 396 124 0
3 Grease gun (capacity 24 g.)	615 990 149 0
• Lubricant for bevel gear (1 kg)	615 990 148 0



### Lou Zampini & Associates

2 Douglas Pike, Rt. 7  
Smithfield, RI 02917  
1 800 353 4676  
FAX 1 401 679 0165



# Grinders for carbide burrs, mounted points and sanding discs

375 Watts (0.5 hp) - 12 000 to 40 000 rpm

Supplied with CNOMO collet,  $\varnothing$  6 mm



A



B



C



D

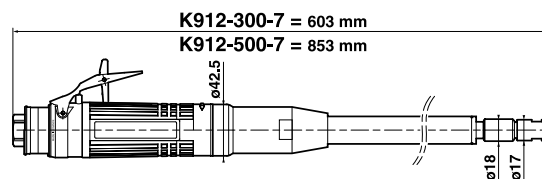
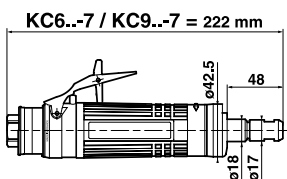
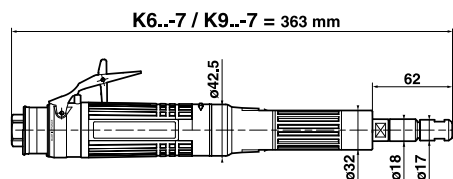
K3..-7 / KC3..-7 / KA3..E7 / KA3..-7  
CNOMO type collet



Caution: comply with the speeds recommended by component and abrasive manufacturers

PICTURE REF	MODEL	PART NUMBER	FREE SPEED	COLLET MAX CAPACITY	POWER		WEIGHT		AIR CONSUMPTION				AIR INLET THREAD	HOSE INT. $\varnothing$
					rpm	mm	W	hp	kg	lb.	AT FREE SPEED	AT MAX OUTPUT		
<b>STRAIGHT GRINDERS</b>														
A	K340-7	615 170 036 0	40000	6.4	375	0.5	0.58	1.28	7.5	16.0	10.0	21	1/4	8
A	K331-7	615 170 035 0	31000	6.4	375	0.5	0.58	1.28	4.5	9.5	9.5	20	1/4	8
A	K325-7	615 170 034 0	25000	6.4	375	0.5	0.58	1.28	3.5	7.5	9.5	20	1/4	8
A	K320-7	615 170 033 0	20000	6.4	375	0.5	0.58	1.28	2.5	5.0	8.0	17	1/4	8
B	KC340-7	615 170 032 0	40000	6.4	375	0.5	0.40	0.88	7.5	16.0	10.0	21	1/4	8
B	KC331-7	615 170 031 0	31000	6.4	375	0.5	0.40	0.88	4.5	9.5	9.5	20	1/4	8
B	KC325-7	615 170 030 0	25000	6.4	375	0.5	0.40	0.88	3.5	7.5	9.5	20	1/4	8
B	KC320-7	615 170 029 0	20000	6.4	375	0.5	0.40	0.88	2.5	5.0	8.0	17	1/4	8
<b>ANGLE GRINDERS</b>														
C	KA320E7	615 170 047 0	20000	6.4	375	0.5	0.60	1.32	6.5	13.5	10.0	21	1/4	8
C	KA312E7	615 170 039 0	12000	6.4	375	0.5	0.60	1.32	3.0	6.5	9.0	19	1/4	8
D	KA320-7	615 170 043 0	20000	6.4	375	0.5	0.50	1.10	6.5	13.5	10.0	21	1/4	8
D	KA312-7	615 170 037 0	12000	6.4	375	0.5	0.50	1.10	3.0	6.5	9.0	19	1/4	8

# Accessories



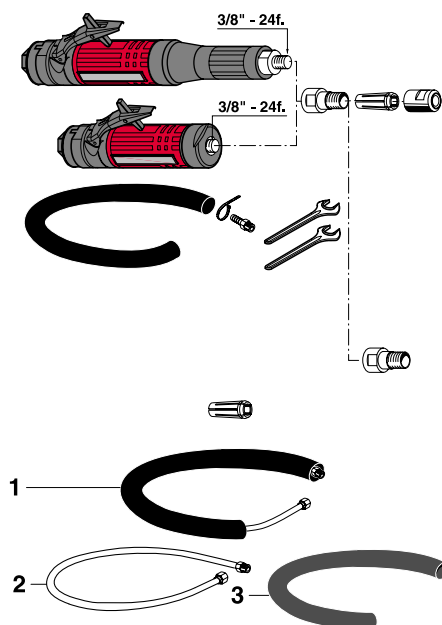
## K6..-7 / K9..-7 / KC6..-7 / KC9..-7

### ACCESSORIES INCLUDED

	PART NO.
• CNOMO collet $\varnothing$ 6 mm	615 526 049 0
• Exhaust hose L = 1.5 m (60")	615 875 1130
• Clamp	615 873 415 0
• 3/8" air hose nipple for 10 mm ID hose	615 704 017 0
• Flat wrench, 14 mm (Qty 2)	615 801 005 0

### OPTIONAL ACCESSORIES

ITEM	PART NO.
• Collet-holder extension L = 28 mm	615 523 019 0
• CNOMO collet $\varnothing$ 3 mm	615 526 048 0
• CNOMO collet $\varnothing$ 6.35 mm (1/4")	615 526 050 0
• CNOMO collet $\varnothing$ 8 mm	615 526 051 0
1 Complete silencer kit	615 396 166 0
2 Inlet hose assembly L = 1.7 m (67") 3/8"M - 3/8"F - $\varnothing$ 10 mm	615 870 210 0
3 Reinforced cloth-lined exhaust hose L = 0.75 m (30")	615 875 116 0



# Grinders for carbide burrs and mounted points

600 - 900 Watts (0.8 - 1.21 hp) - 12 000 to 28 000 rpm

Supplied with CNOMO collet,  $\varnothing$  6 mm



A



B



C



D

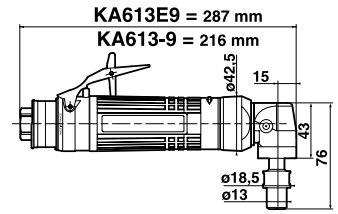
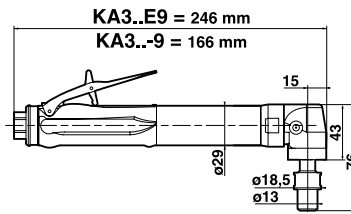
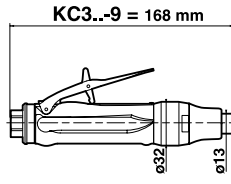
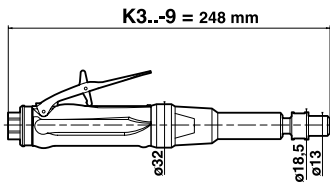
K6..-7 / KC6..-7 / K9..-7 / KC9..-7  
CNOMO type collet



Caution: comply with the speeds recommended by component and abrasive manufacturers

PICTURE REF	MODEL	PART NUMBER	FREE	COLLET	POWER		WEIGHT		AIR CONSUMPTION				AIR	HOSE
			SPEED	MAX CAPACITY	W	hp	kg	lb.	AT FREE SPEED	AT MAX OUTPUT	INLET THREAD	INT. Ø		
			rpm	mm					l/s	cfm	l/s	cfm	inch	mm
A	K628-7	615 170 107 0	28000	8	600	0.80	1.3	2.9	16	34	15	32	3/8	10
A	K624-7	615 170 106 0	24000	8	600	0.80	1.3	2.9	10	21	15	32	3/8	10
A	K922-7	615 170 119 0	22000	8	900	1.21	1.4	3.1	13	28	18	38	3/8	10
A	K619-7	615 170 105 0	19000	8	600	0.80	1.3	2.9	6	13	15	32	3/8	10
A	K918-7	615 170 117 0	18000	8	900	1.21	1.4	3.1	10	21	18	38	3/8	10
A	K615-7	615 170 104 0	15000	8	600	0.80	1.3	2.9	6	13	15	32	3/8	10
A	K915-7	615 170 114 0	15000	8	900	1.21	1.4	3.1	8	17	17	36	3/8	10
A	K912-7	615 170 110 0	12000	8	900	1.21	1.4	3.1	6	13	16	34	3/8	10
B	KC628-7	615 170 126 0	28000	8	600	0.80	0.9	2.0	16	34	15	32	3/8	10
B	KC624-7	615 170 125 0	24000	8	600	0.80	0.9	2.0	10	21	15	32	3/8	10
B	KC922-7	615 170 130 0	22000	8	900	1.21	1.0	2.2	13	28	18	38	3/8	10
B	KC619-7	615 170 124 0	19000	8	600	0.80	0.9	2.0	6	13	15	32	3/8	10
B	KC918-7	615 170 129 0	18000	8	900	1.21	1.0	2.2	10	21	18	38	3/8	10
B	KC615-7	615 170 123 0	15000	8	600	0.80	0.9	2.0	6	13	15	32	3/8	10
B	KC915-7	615 170 128 0	15000	8	900	1.21	1.0	2.2	8	17	17	36	3/8	10
B	KC912-7	615 170 127 0	12000	8	900	1.21	1.0	2.2	6	13	16	34	3/8	10
C	K912-300-7	615 170 108 0	12000	8	900	1.21	2.1	4.6	6	13	16	34	3/8	10
D	K912-500-7	615 170 109 0	12000	8	900	1.21	2.7	5.9	6	13	16	34	3/8	10

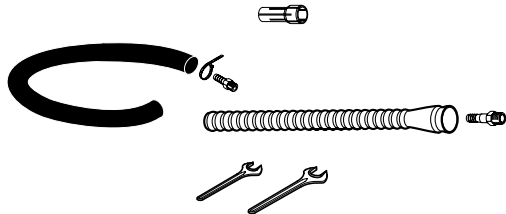
# Accessories



## K3..-9 / KC3..-9 / KA3..E9 / KA3..-9 / KA613E9 / KA613-9

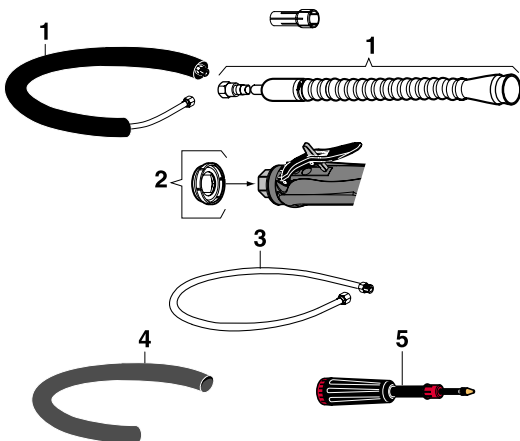
### ACCESSORIES INCLUDED

	KA613E9	K3../KC3..-9
	KA613-9	KA3..E9/KA3..-9
• Series 300 resilient collet, $\varnothing$ 5.55 to 6.35 mm (1/4")	615 526 059 0	615 526 059 0
• Exhaust hose L = 0.8 m (31")	-	615 875 106 0
• Exhaust hose L = 1.5 m (60")	615 875 113 0	-
• Clamp	615 873 415 0	-
• 1/4" air hose nipple for 8 mm ID hose	-	615 704 019 0
• 3/8" air hose nipple for 10 mm ID hose	615 704 017 0	-
• Flat wrench, 11 mm (7/16")	615 801 003 0	615 801 003 0
• Flat wrench, 17 mm (11/16")	615 801 032 0	615 801 032 0



### OPTIONAL ACCESSORIES

ITEM	KA613E9	K3../KC3..-9
	KA613-9	KA3..E9/KA3..-9
• Series 300 resilient collet, $\varnothing$ 0.4 to 1.2 mm	615 526 052 0	615 526 052 0
• Series 300 resilient collet, $\varnothing$ 1.2 to 2 mm	615 526 053 0	615 526 053 0
• Series 300 resilient collet, $\varnothing$ 1.7 to 2.5 mm	615 526 054 0	615 526 054 0
• Series 300 resilient collet, $\varnothing$ 2.4 to 3.2 mm (1/8")	615 526 055 0	615 526 055 0
• Series 300 resilient collet, $\varnothing$ 3.16 to 3.96 mm	615 526 056 0	615 526 056 0
• Series 300 resilient collet, $\varnothing$ 3.95 to 4.75 mm	615 526 057 0	615 526 057 0
• Series 300 resilient collet, $\varnothing$ 4.75 to 5.55 mm	615 526 058 0	615 526 058 0
1 Complete silencer kit	615 396 166 0	615 396 101 0
2 Clipable silencer	-	615 396 124 0
3 Inlet hose assembly L = 1.7 m (67") 3/8"M - 3/8"F $\varnothing$ 10 mm	615 870 210 0	-
4 Reinforced cloth-lined exhaust hose L = 0.75 m (30")	615 875 116 0	-
5 Grease gun (capacity 24 g.)	615 990 149 0	615 990 149 0
• Lubricant for bevel gear (1 kg)	615 990 148 0	615 990 148 0



PLANING DOWN WELD



SEMI-FINISH/FINISH



TRIMMING



CLEANING



TRIMMING - MACHINING



GRINDING



# Grinders for carbide burrs, mounted points and sanding discs

375 - 600 Watts (0.5 - 0.8 hp) - 12 000 to 40 000 rpm

Supplied with series 300 resilient collet,  $\varnothing$  5.55 to 6.35 mm (1/4")



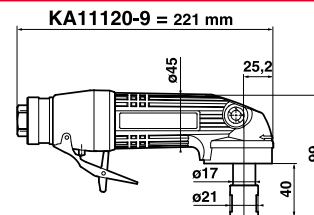
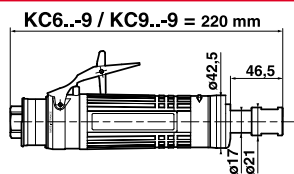
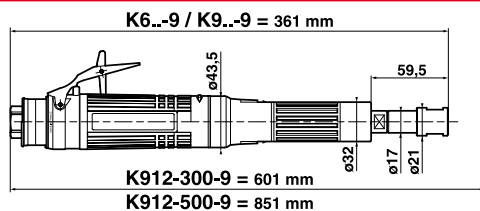
K3..-9 / KC3..-9 / KA3..(E)9 / KA613(E)9  
Series 300 collet



Caution: comply with the speeds recommended by component and abrasive manufacturers

PICTURE REF	MODEL	PART NUMBER	FREE SPEED	COLLET MAX CAPACITY	POWER		WEIGHT		AIR CONSUMPTION				AIR INLET THREAD	HOSE INT. Ø	
					rpm	mm	W	hp	kg	lb.	AT FREE SPEED	AT MAX OUTPUT			l/s
<b>STRAIGHT GRINDERS</b>															
A	K340-9	615 170 139 0	40000	6.35	375	0.5	0.57	1	.26	7.5	16 .0	100	21	1/4	8
A	K331-9	615 170 140 0	31000	6.35	375	0.5	0.57	1	.26	4.5	9 .5	95	20	1/4	8
A	K325-9	615 170 141 0	25000	6.35	375	0.5	0.57	1	.26	3.5	7 .5	95	20	1/4	8
A	K320-9	615 170 142 0	20000	6.35	375	0.5	0.57	1	.26	2.5	5 .0	80	17	1/4	8
B	KC340-9	615 170 143 0	40000	6.35	375	0.5	0.38	0	.84	7.5	16 .0	100	21	1/4	8
B	KC331-9	615 170 144 0	31000	6.35	375	0.5	0.38	0	.84	4.5	9 .5	95	20	1/4	8
B	KC325-9	615 170 145 0	25000	6.35	375	0.5	0.38	0	.84	3.5	7 .5	95	20	1/4	8
B	KC320-9	615 170 027 0	20000	6.35	375	0.5	0.38	0	.84	2.5	5 .0	80	17	1/4	8
B	KC318-9	615 170 196 0	18000	6.35	375	0.5	0.38	0	.84	2.5	5 .0	80	17	1/4	8
<b>ANGLE GRINDERS</b>															
C	KA320E9	615 170 146 0	20000	6.35	375	0.5	0.61	1	.35	6.5	13 .5	100	21	1/4	8
C	KA312E9	615 170 147 0	12000	6.35	375	0.5	0.61	1	.35	3.0	6 .5	90	19	1/4	8
D	KA320-9	615 170 148 0	20000	6.35	375	0.5	0.51	1	.13	6.5	13 .5	100	21	1/4	8
D	KA312-9	615 170 149 0	12000	6.35	375	0.5	0.51	1	.13	3.0	6 .5	90	19	1/4	8
E	KA613E9	615 170 136 0	13000	6.35	600	0.8	1.40	3	.10	100	21.0	150	3 2	3/8	10
F	KA613-9	615 170 135 0	13000	6.35	600	0.8	1.10	2	.40	100	21.0	150	32	3/8	10

# Accessories



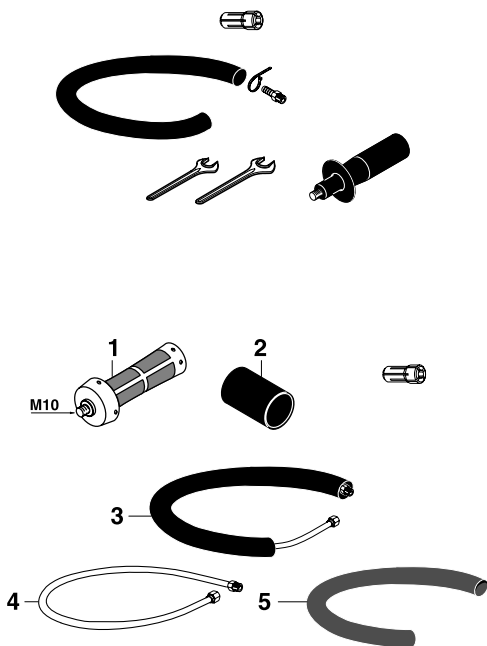
## K6..-9 / K9..-9 / KC6..-9 / KC9..-9 / KA11120-9

### ACCESSORIES INCLUDED

	PART NO.
• Series 200 resilient collet, $\varnothing$ 5.55 to 6.35 mm (1/4")	615 526 063 0
• Exhaust hose L = 1.5 m (60")	615 875 113 0
• Clamp	615 873 415 0
• 3/8" air hose nipple for 10 mm ID hose	615 704 017 0
• 3/8" air hose nipple for 13 mm ID hose for KA11120-9	616 704 027 0
• Flat wrench, 14 mm	615 801 005 0
• Flat wrench, 19 mm (3/4")	615 801 076 0
• Side handle for KA11120-9	615 576 038 0

### OPTIONAL ACCESSORIES

ITEM	PART NO.
• Series 200 resilient collet, $\varnothing$ 2.4 to 3.2 mm (1/8")	615 526 061 0
• Series 200 resilient collet, $\varnothing$ 5.2 to 6 mm	615 526 062 0
• Series 200 resilient collet, $\varnothing$ 7.2 to 8 mm	615 526 064 0
• Series 200 resilient collet, $\varnothing$ 8.7 to 9.5 mm (3/8")	615 526 065 0
1 Vibration-damping handle for KA11120-9	615 576 066 0
2 Insulating sleeve for KA11120-9	615 570 412 0
3 Complete silencer kit	615 396 166 0
4 Inlet hose assembly L = 1.7 m (67") 3/8"M - 3/8"F - $\varnothing$ 10 mm	615 870 210 0
4 Inlet hose assembly L = 1.7 m (67") 3/8"M - 3/8"F $\varnothing$ 13 mm for KA11120-9	615 804 064 0
5 Reinforced cloth-lined exhaust hose L = 0.75 m (30")	615 875 116 0



# Grinders for carbide burrs, mounted points and sanding discs

600 to 1100 Watts (0.8 to 1.5 hp) - 12 000 to 28 000 rpm

Supplied with series 200 resilient collet,  $\varnothing$  5.55 to 6.35 mm (1/4")



A



B



C



D



E

K6..-9 / K9..-9 / KC6..9 / KC9..9 / KA11120-9

Series 200 collet

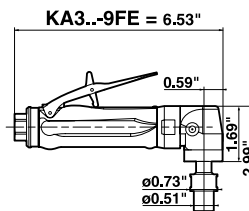


Caution: comply with the speeds recommended by component and abrasive manufacturers

PICTURE REF	MODEL	PART NUMBER	FREE	COLLET MAX CAPACITY	POWER		WEIGHT		AIR CONSUMPTION				AIR INLET THREAD	HOSE INT. Ø
			SPEED		W	hp	kg	lb.	AT FREE SPEED	AT MAX OUTPUT	inch	mm		
			rpm	mm					l/s	cfm	l/s	cfm		mm
A	K628-9	615 170 1500	28000	9.5	600	0.80	1.3	2.9	16	34	15	32	3/8	10
A	K624-9	615 170 1510	24000	9.5	600	0.80	1.3	2.9	10	21	15	32	3/8	10
A	K922-9	615 170 1520	22000	9.5	900	1.21	1.4	3.1	13	28	18	38	3/8	10
A	K619-9	615 170 1530	19000	9.5	600	0.80	1.3	2.9	6	13	15	32	3/8	10
A	K918-9	615 170 1540	18000	9.5	900	1.21	1.4	3.1	10	21	18	38	3/8	10
A	K615-9	615 170 1550	15000	9.5	600	0.80	1.3	2.9	6	13	15	32	3/8	10
A	K915-9	615 170 1560	15000	9.5	900	1.21	1.4	3.1	8	17	17	36	3/8	10
A	K912-9	615 170 1570	12000	9.5	900	1.21	1.4	3.1	6	13	16	34	3/8	10
B	KC628-9	615 170 1580	28000	9.5	600	0.80	0.9	2.0	16	34	15	32	3/8	10
B	KC624-9	615 170 1590	24000	9.5	600	0.80	0.9	2.0	10	21	15	32	3/8	10
B	KC922-9	615 170 1600	22000	9.5	900	1.21	1.0	2.2	13	28	18	38	3/8	10
B	KC619-9	615 170 1610	19000	9.5	600	0.80	0.9	2.0	6	13	15	32	3/8	10
B	KC918-9	615 170 1620	18000	9.5	900	1.21	1.0	2.2	10	21	18	38	3/8	10
B	KC615-9	615 170 1630	15000	9.5	600	0.80	0.9	2.0	6	13	15	32	3/8	10
B	KC915-9	615 170 1640	15000	9.5	900	1.21	1.0	2.2	8	17	17	36	3/8	10
B	KC912-9	615 170 1650	12000	9.5	900	1.21	1.0	2.2	6	13	16	34	3/8	10
C	K912-300-9	615 170 1690	12000	9.5	900	1.21	2.1	4.6	6	13	16	34	3/8	10
D	K912-500-9	615 170 1700	12000	9.5	900	1.21	2.7	5.9	6	13	16	34	3/8	10
E	KA11120-9	615 170 0600	12000	9.5	1100	1.50	1.4	3.1	10	21	19	40	3/8	13



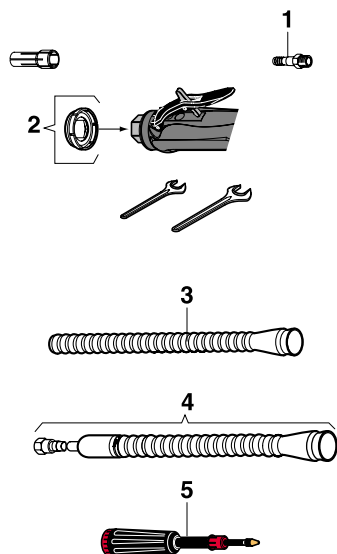
# Accessories



## KA320-9FE / KA312-9FE

### ACCESSORIES INCLUDED

ITEM	PART NO.
• Series 300 resilient collet, $\varnothing$ 1/4" (5.55 to 6.35 mm)	615 526 059 0
1 1/4" air hose nipple for 5/16" (8 mm) ID hose	615 704 019 0
2 Clip-on silencer	615 396 124 0
• Flat wrench, 7/16" (11 mm)	615 801 003 0
• Flat wrench, 11/16" (17 mm)	615 801 032 0



### OPTIONAL ACCESSORIES

ITEM	PART NO.
• Series 300 resilient collet, $\varnothing$ 3/64" (0.4 to 1.2 mm)	615 526 052 0
• Series 300 resilient collet, $\varnothing$ 5/64" (1.2 to 2 mm)	615 526 053 0
• Series 300 resilient collet, $\varnothing$ 3/32" (1.7 to 2.5 mm)	615 526 054 0
• Series 300 resilient collet, $\varnothing$ 1/8" (2.4 to 3.2 mm)	615 526 055 0
• Series 300 resilient collet, $\varnothing$ 5/32" (3.16 to 3.96 mm)	615 526 056 0
• Series 300 resilient collet, $\varnothing$ 3/16" (3.95 to 4.75 mm)	615 526 057 0
• Series 300 resilient collet, $\varnothing$ 7/32" (4.75 to 5.55 mm)	615 526 058 0
3 Exhaust hose L = 31" (0.8 m)	615 875 106 0
4 Complete silencer kit	615 396 101 0
5 Grease gun includes 0.8 oz. (24 g)	615 990 149 0
• Grease for bevel gear 2.2 lb. (1 kg)	615 990 148 0

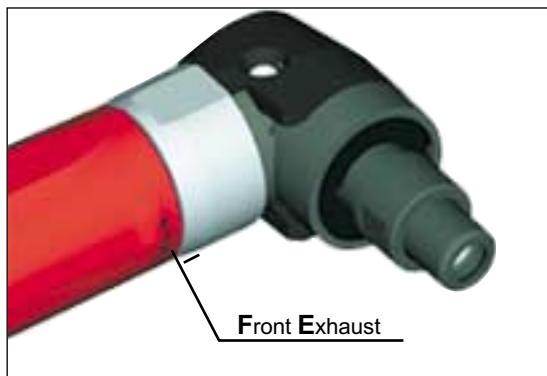


# Grinders for carbide burrs, mounted points and sanding discs

0.5 hp - 12,000 - 20,000 rpm

Supplied with series 300 resilient collet,  $\varnothing$  1/4" (5.55 to 6.35 mm)

**Front Exhaust**



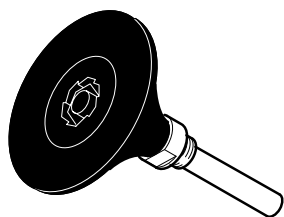
K312-9FE / KA320-9FE  
Series 300 collet



**WARNING: comply with the speeds recommended by component and abrasive manufacturers**

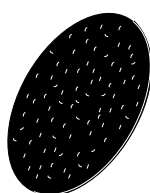
PICTURE REF	MODEL	PART NUMBER	FREE SPEED	COLLET MAX CAPACITY	POWER		WEIGHT		AIR CONSUMPTION				AIR INLET THREAD	HOSE INT $\varnothing$
					rpm	in.	hp	W	lb.	kg	AT FREE SPEED	AT MAX OUTPUT		
A	KA320-9FE	615 170 206 0	20,000	1/4	0.5	375	1.13	0.51	13.5	6.5	21	10.0	1/4	5/16
A	KA312-9FE	615 170 205 0	12,000	1/4	0.5	375	1.13	0.51	6.5	3.0	19	9.0	1/4	5/16

# Abrasive accessories



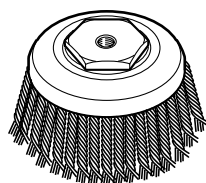
## BACKING PAD FOR MECHANICAL MOUNTING DISCS

SPEED rpm	Ø mm	PART NO.
25 000	50	615 804 098 0



## MECHANICAL MOUNTING ABRASIVE DISCS

SPEED rpm	GRIT	PART NO.
25 000	P40	615 804 099 0
25 000	P60	615 804 100 0
25 000	P80	615 804 101 0
25 000	P120	615 804 102 0



## CUP BRUSHES, THREAD 5/8"-11f.

MAX SPEED rpm	Ø mm	TYPE	WIRE Ø mm	PART NO.
6 500	80	Twisted	5/10	615 804 065 0
4 500	100	Undulated	3/10	615 804 073 0
4 500	100	Undulated	5/10	615 804 066 0
6 500	120	Undulated	3/10	615 804 067 0
6 500	120	Twisted	8/10	615 804 068 0
4 500	150	Undulated	3/10	615 804 069 0
4 500	150	Twisted	8/10	615 804 071 0



## RADIAL BRUSHES

SPEED MAX rpm	Ø mm	BORE mm	TYPE	WIRE Ø mm	PART NO.
4 500	100	15.8	Undulated	5/10	615 854 155 0
4 500	150	15.8	Undulated	3/10	615 858 153 0

