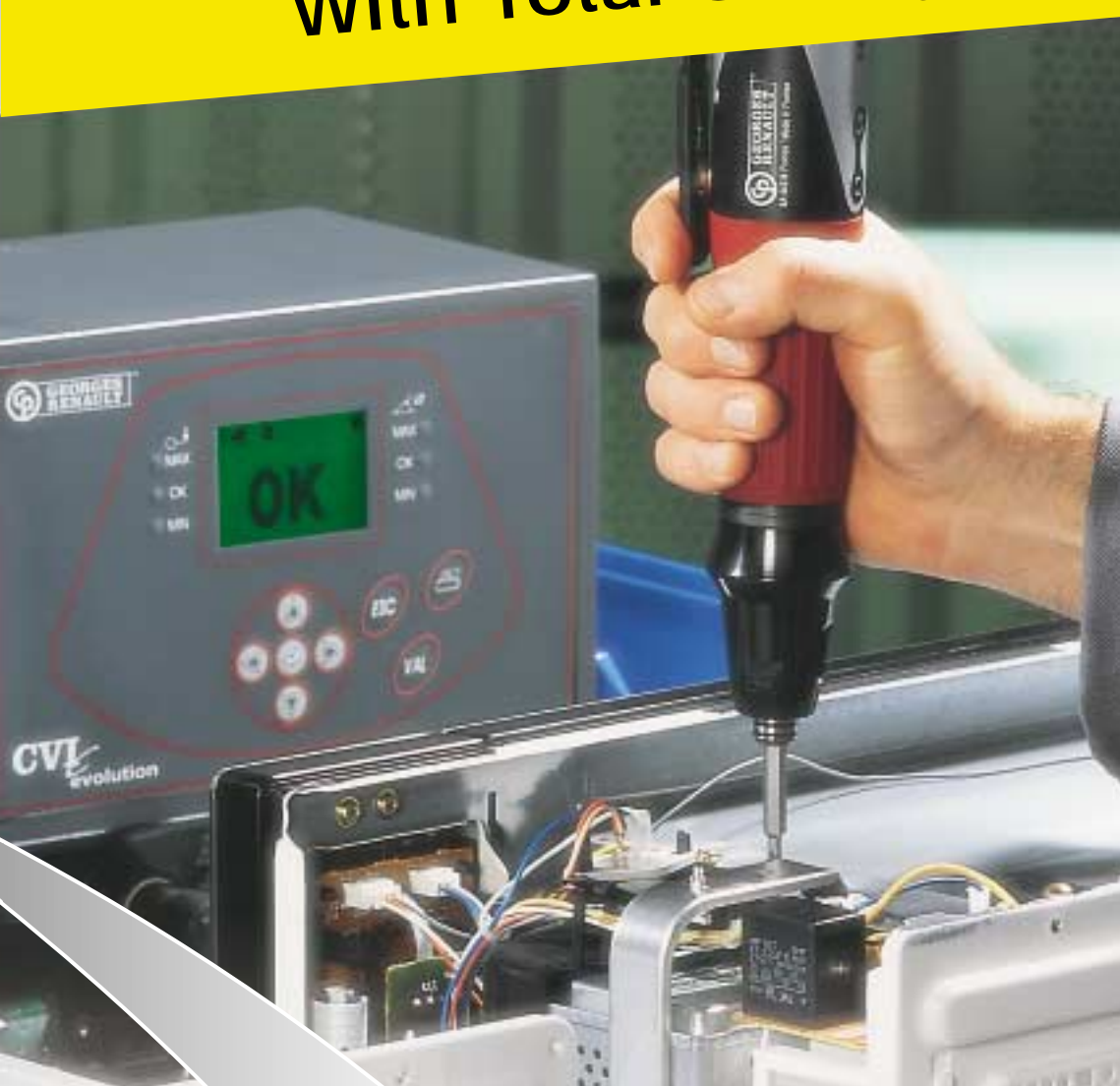


Light Assembly
With Total Quality !



ECL Brushless Screwdriver

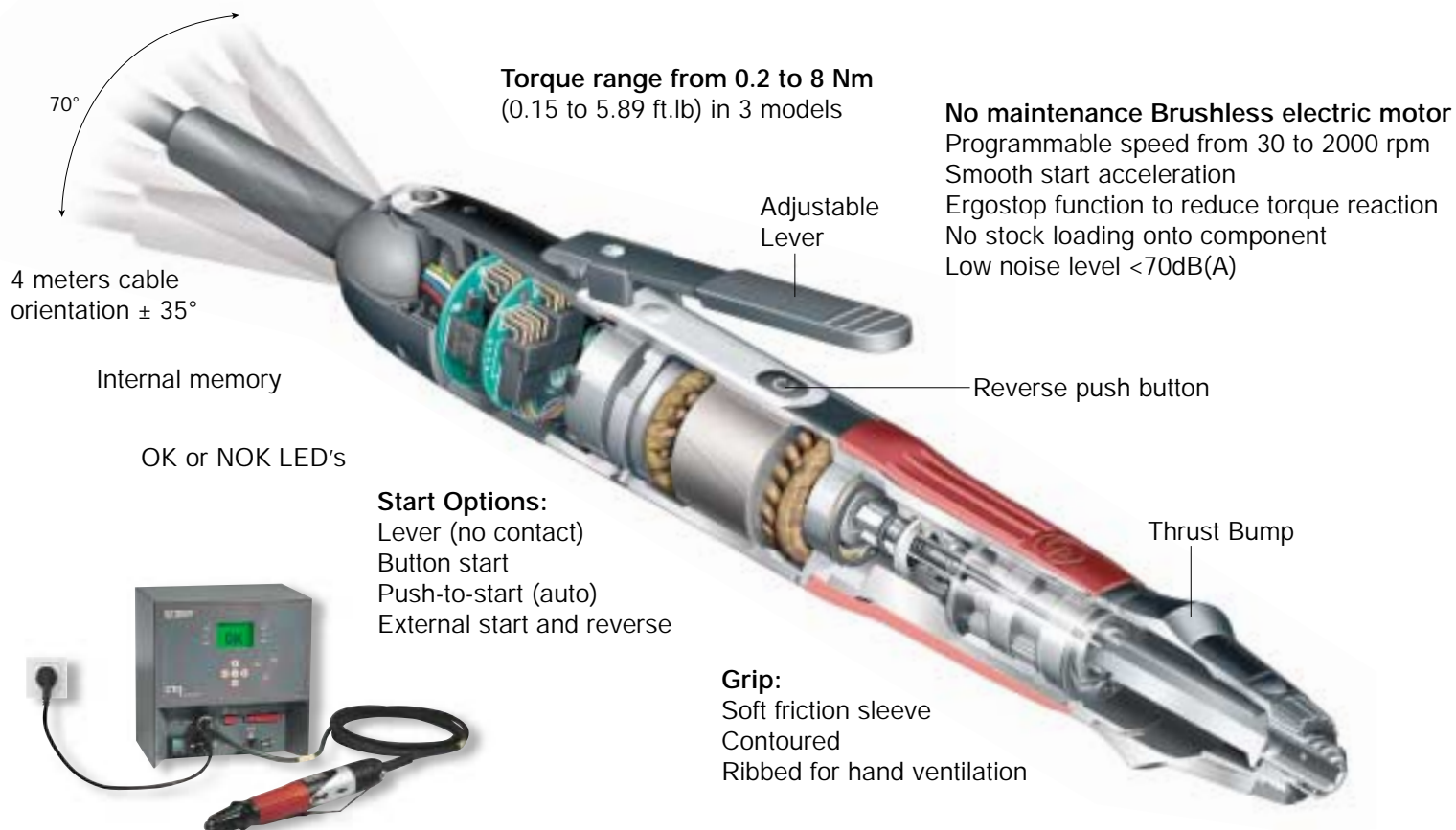


www.chicagopneumatic.com

Lou Zampini & Associates
2 Douglas Pike, Rt. 7
Smithfield, RI 02917
1 800 353 4676
FAX 1 401 679 0165

ECL System: excellence in assembly

Can be used for all critical applications, offering improved control, joint integrity and many more advantages over conventional tools.



The CVIC electric tightening system controls the torque**, the angle of rotation and the rotation speed.

Easy to use

- In self learning mode, simply enter the torque and the system calculates all other parameters for the application.
- In programming mode, you can program all the tightening data independantly (torque/angle/speed/time).

Suited to all applications

- Up to 8 different torques for each tool depending on the version L, M or H*.

Reliability and quality of tightening

- Accept and reject report shown by LED's on the tool, on the CVIC display and can also be downloaded via I/O or serial port.
- 100* tightening results memory.

Connection of peripherals

- PC with CVIPC2000 software.
- Socket tray or bar code reader to select cycle numbers.
- Printer.

Reduced costs and maintenance

- Gear boxes tested to more than 1 500 000 tightenings.
- All tool characteristics automatically recognised by the controller. The tool integrated memory which contains the calibration and tightening parameters (cycle 0) allows you to have a ready-to-use "plug and play" tool.
- Energy consumption (less than 100 watt/hour) is significantly lower than for an equivalent pneumatic tool.

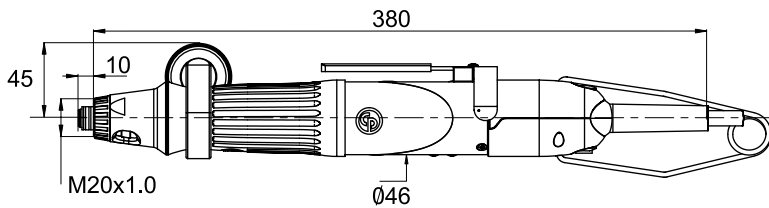
** the applied torque is controlled by measuring the power consumption and the rotational speed of the electric motor.

*For further information please refer to CVIC catalogue



ECL

0.2 to 8 Nm (0.15 to 5.9 ft.lb) - 1400 and 2000 rpm



ACCESSORIES INCLUDED	PART NO.
• Cable length: 4m	615 917 420 0
• Reaction handle (only for ECL8)	467033
• Suspension Bail	467003

MODEL	PART NUMBER	TORQUE RANGE		ROTATIONAL SPEED		DRIVE	LENGTH	WEIGHT	
		Nm	Ft.lb	rpm/230 V	rpm/110 V			kg	lb
ECL1	615 165 235 0	0.2 - 0.8	0.15 - 0.58	2000	2000	hex.1/4	380	1.0	2.2
ECL3	615 165 236 0	0.6 - 2.5	0.44 - 1.85	2000	2000	hex.1/4	380	1.0	2.2
ECL8	615 165 237 0	2.0 - 8.0	1.47 - 5.89	1400	1400	hex.1/4	380	1.1	2.4



Must be ordered with the controller	START-UP KIT		
	PLUG	LITERATURE	PART NO.
	A	French	615 928 040 0
	C	English	615 928 041 0
	A	English	615 928 046 0
	D	English	615 928 047 0
	B	English	615 928 049 0
	A	German	615 928 042 0
	A	Spanish	615 928 043 0
	E	Italian	615 928 044 0
	A	Dutch	615 928 048 0
	A	Swedish	615 928 045 0



MODEL	PART NUMBER	SUPPLY Single-phase		CONSUMPTION		WIDTH	HEIGHT	DEPTH	WEIGHT	
		Volts	hertz	230 V	115 V	mm			kg	lb
CVIC L	615 932 608 0	100 to 250	50 / 60	2A	4A	260	270	170	5	11
CVIC M	615 932 601 0	100 to 250	50 / 60	2A	4A	260	270	170	5	11
CVIC H	615 932 610 0	100 to 250	50 / 60	2A	4A	260	270	170	5	11

Accessories



ECL

OPTIONAL ACCESSORIES

PART NUMBER

• Extension cable length: 5 m	615 917 222 0
• Extension cable length: 10 m	615 917 224 0
• Extension cable length: 15 m	615 917 225 0
• Extension cable length: 20 m	615 917 226 0
• Extension cable length: 25 m	615 917 227 0
• Extension cable length: 30 m	615 917 228 0
• Balancer 4DU - from 1.0 to 2.0 kg - cable length 1.5 m - weight 0.6 kg	50532

Spring Loaded Shafts and Bearing Supports

1 Bit Adaptor	103782
2 Spring Loaded Shaft 25 mm stroke, 3/8" Sq Drive	108342
3 Shaft Support and Nose Mount	108412

Nose Mounts

4 Nose Mount	108392
--------------	--------

Offset Head and Spring Loaded Shaft

5 Offset Head, Offset 30 mm	384993
6 Spring Loaded Shaft 25 mm stroke, 3/8" Sq Drive	108352

Screwdriver Bit Adaptor

7 3/8" Square to 1/4" Hex Power Adaptor	108322
---	--------

Stand and Balancing

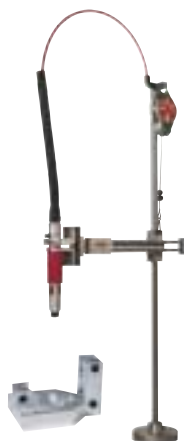
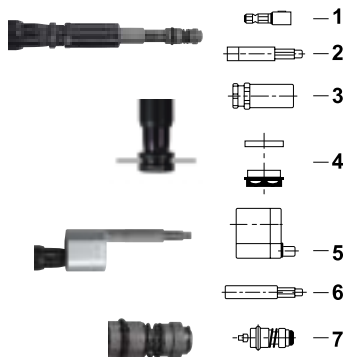
	Stand	Tool clamp
• D53 Stand, 260 mm Horizontal Stroke	388163	615 396 372 0
• D53X Stand, 395 mm Horizontal Stroke	388173	615 396 372 0

CVIC Controller

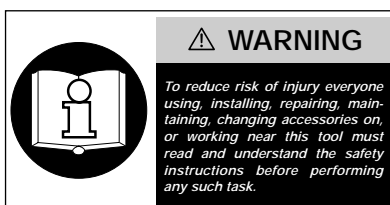
OPTIONAL ACCESSORIES

PART NUMBER

• CVIS/CVICPC 2000 software	615 927 521 0
• PC cable Length 2 m	615 917 047 0



Safety Instructions



Sound levels +/- 3dB(A)* and vibration values* measured in accordance with EN 50144.

*These declared values were obtained by laboratory testing in compliance with stated standards and are not adequate for risk assessments. Values measured in individual work places may be higher than the declared values. The actual exposure values and risk of harm experienced by an individual are unique and depend upon the

way the user works, the workpiece and the work station design, as well as upon the exposure time and the physical condition of the user.

We CP Desoutter cannot be held liable for the consequences of using declared values, instead of values reflecting the actual exposure, in an individual risk assessment in a work place situation over which we have no control.

Tools are CE marked to comply with European Machinery - low voltage and EMC Directives.

Specifications subject to change without prior notice.

Further occupational health and safety information can be obtained from the following web sites:

<http://www.osha.gov> (USA)
<http://europe.osha.eu.int> (Europe).



Excellence in assembly

Can be used with our complete new range of digital transducers

