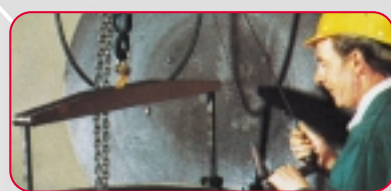




Hoist & Balancers



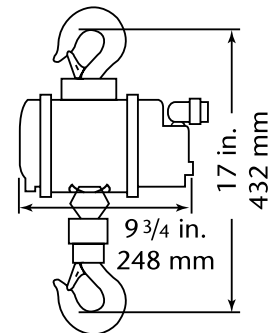
CP-1100 Hoist

Applications

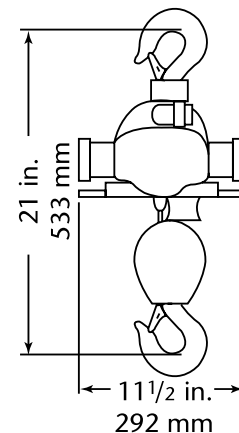
The CP-1100 portable lightweight, high-speed hoist is used for fast-moving production operations in hazardous environments, and applications where space is limited for materials handling, production, assembly operations in medium-to heavy-manufacturing, processing industries, automotive, machinery, construction equipment, steel fabrication, chemical, petrochemical, petroleum industries and maintenance.

Features

- thrust bearing-mounted latch hooks – for hoist positioning
- latch hooks – allow free load rotation, lessen accidental unhooking
- safety cable attachment point – provides secure installation
- automatic limit stops – prevent overtravel, even at fastest speeds
- external screw adjustment – for lift and descent rates
- withstands constant stopping, starting and stalling – without damage
- operator controllable speed – for precise load positioning
- swivel-mounted air inlet – permits free hoist movement
- built-in lubricator – reduces friction
- exhaust muffler – reduces sound level
- remote pendant control – available in all sizes



250kg & 500kg models
with single chain drop



1000kg models
uses sheave block
and double chain

NOTE: These models not available for sale in European Economic Area

All Models: 15' (4.6m) lift hook travel; 3/8" (NPTF) air inlet thread. **Pull Cord:** 10' (3m) long. **Pendant Control:** 11' (3.4m) long.

PICTURE REF	PART NUMBER	CATALOG NUMBER	PULL CORD	PENDANT CONTROL	RATED CAPACITY		LIFTING SPEED AT RATED CAPACITY		NET WEIGHT	
					lb	kg	ft/min	m/min	lb	kg
A	T025102	CP-1100-250	✓		550	250	65	20	37	16.8
A	T025103	CP-1100-250R		✓	550	250	65	20	41	18.6
A	T025104	CP-1100-500	✓		1100	500	50	15	37	16.8
A	T025105	CP-1100-500R		✓	1100	500	50	15	41	18.6
A	T025106	CP-1100-1000	✓		2200	1000	21	6.4	50	22.7
A	T025107	CP-1100-1000R		✓	2200	1000	21	6.4	54	24.5

Standard Equipment: Exhaust muffler, latch hooks, built-in lubricator and air strainer.

Optional Equipment: Remote Pendant Control Kit, Part No. KF131935. Chain bucket and trolley – see page 5.
Non standard lift heights available – contact Chicago Pneumatic.

Air Consumption: All models at full load 60 cfm (28 l/s)

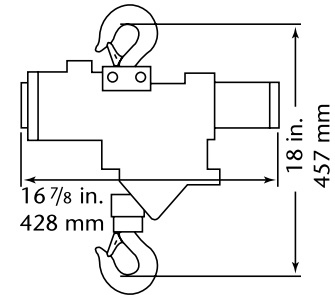
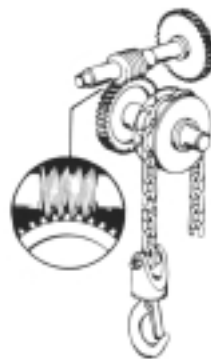
CP-1200 Hoist

Applications

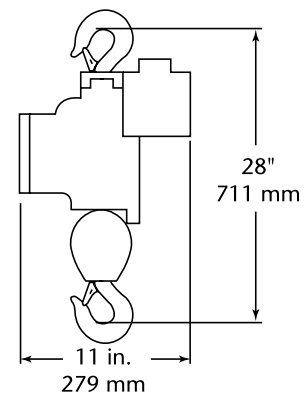
The CP-1200 extra-heavy-duty hoist is designed to lift raw or processed materials in steel manufacturing plants, heavy assemblies in automobile, truck, tractor factories, aerospace industries, heavy machinery manufacture, petrochemical plants operations. Excellent for accurate heavy load positioning over machining centres.

Features

- self-locking worm gear stops load and holds it securely when air flow to motor stops – never requires adjustment
- operator speed control – for precise load spotting
- Power Vane motor – provides positive high-torque starting characteristics
- all rotating parts supported on antifriction bearings – for smooth operation
- automatic, adjustable limit stops – prevent over-travel, even at fastest speeds
- withstands constant stopping, starting, and stalling – without damage or overheating
- remote pendant control – available in all sizes
- standard safety cable attachment point – provides secure installation



500lb to 2000lb models
with single chain drop



4000lb models
includes sheave block
and double chain

CP "Worm-Drive" – CP Air Hoists are powered by a smooth-running, long-wearing rotary vane motor which drives the chain sprocket through a spur gear reduction and a worm gear.

It is the self-locking characteristic of this worm gear that provides the unparalleled controllability and reliability of these hoists. When air flow to the motor is stopped, the worm gear stops the load quickly and holds it securely.

NOTE: These models not available for sale in European Economic Area

All Models: 1/2" (NPTF) air inlet thread. Pull Chain: 11' (3.4m) long. Pendant Control: 10' (3m) long.

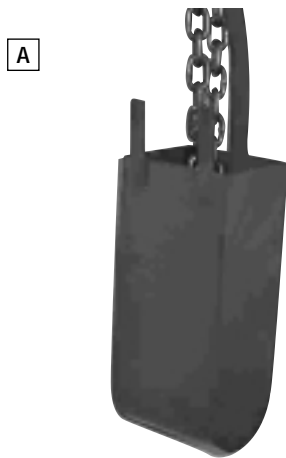
PICTURE REF	PART NUMBER	CATALOG NUMBER	PULL CHAIN	PENDANT CONTROL	RATED CAPACITY		LIFTING SPEED AT RATED CAPACITY		MAX HOOK TRAVEL*		NET WEIGHT	
					lb	kg	ft/min	m/min	ft	m	lb	kg
A	T020446	CP-1200-VANHED	✓		500	227	42	12.8	15	4.6	60	27.3
A	T019782	CP-1200-VANHAB		✓	500	227	42	12.8	15	4.6	63	28.6
A	T019576	CP-1200-MANHED	✓		1000	455	20	6.1	15	4.6	60	27.3
A	T019577	CP-1200-MANHAB		✓	1000	455	20	6.1	15	4.6	63	28.6
A	T019578	CP-1200-TANHED	✓		2000	907	12	3.7	15	4.6	60	27.3
A	T019086	CP-1200-TANHAB		✓	2000	907	12	3.7	15	4.6	63	28.6
A	T020244	CP-1200-FUNFED	✓		4000	1814	5	1.5	15	4.6	109	49.5
A	T019582	CP-1200-FUNFAB		✓	4000	1814	5	1.5	15	4.6	112	50.9

Standard Equipment: Latch hooks, built-in lubricators and air strainer, exhaust muffler.

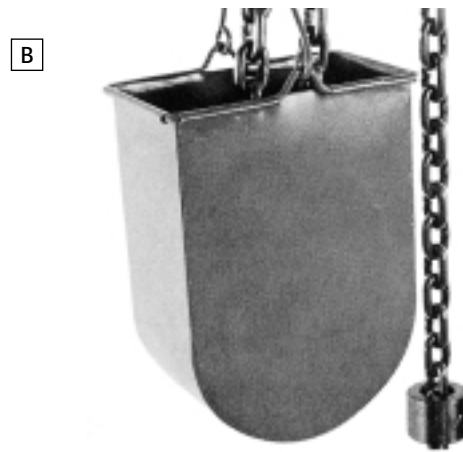
Optional Equipment: Chain bucket and trolleys – see page 5. * Non standard lift heights available – contact Chicago Pneumatic.

Air Consumption: All models at full load 45 cfm (21 l/s)

Hoist Accessories – Chain Buckets and Trolleys



For CP-1100 Hoist



For CP-1200 Hoist

CHAIN BUCKETS

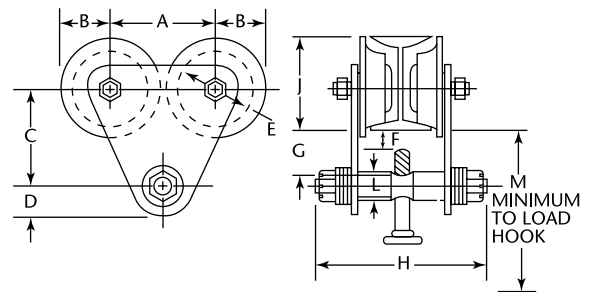
PICTURE REF	FOR HOIST MODELS	PART NUMBER	CHAIN CAPACITY	
			ft	m
A	CP-1100	KF-130797	50	15.3
B	CP-1200	C-088945 for 2000 lb. (907 kg) hoists and under	20	6.1

Hoist Trolleys

Furnished with suitable extra spacers to permit adjustment to American Standard Section "I" beams. 1000 lb. trolley fits 4" to 10" beams; 2000 lb. trolley fits 5" to 12" beams; and 4,000 lb. trolley fits 6" to 18" beams. All steel wheels are fitted with zerk grease fittings.

Hook-on Swivel Trolley for CP-1100 & CP-1200 Hoists

For use with all hoists equipped with swivel top hook. Hoist is free to swivel below trolley.

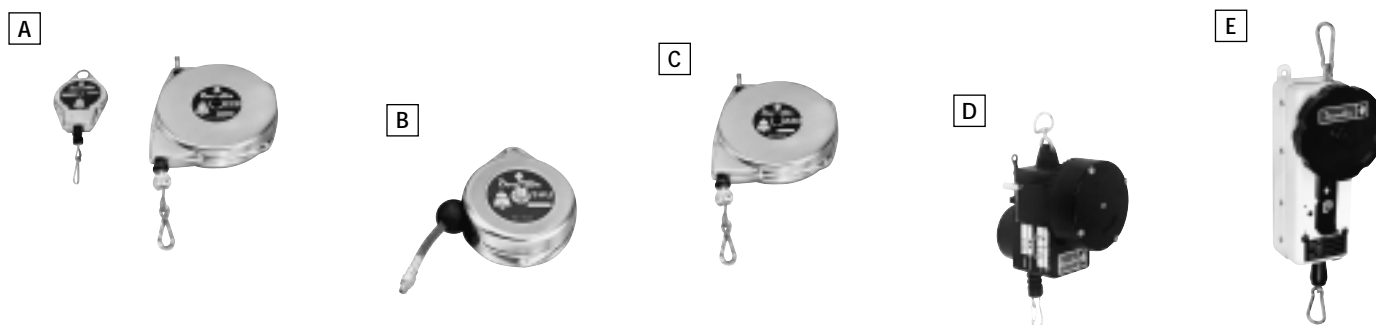


Note: Observe correct spacer installation to suit beam profile.

PICTURE REF	PART NUMBER	DIMENSIONS IN INCHES										
		A	B	C	D	E	F	G	H	J	L	M
C	C-087092	4 ³ / ₈	2 ¹ / ₈	4 ¹ / ₈	1	3 ¹ / ₈	2 ⁵ / ₃₂	12 ⁹ / ₃₂	7 ⁹ / ₁₆	3 ¹⁵ / ₁₆	7 ⁷ / ₈	19
C	C-055643	6 ¹ / ₈	3 ⁹ / ₁₆	5 ¹ / ₈	1 ¹ / ₈	4	1 ¹ / ₈	2 ¹ / ₄	8 ¹ / ₄	4 ⁷ / ₈	1	19 ⁹ / ₁₆
C	C-122878	6 ⁷ / ₈	3 ¹³ / ₁₆	5 ³ / ₄	1 ⁵ / ₁₆	4 ¹⁵ / ₁₆	2 ⁹ / ₃₂	2 ¹ / ₄	8 ³ / ₄	6	1 ¹ / ₈	19 ⁹ / ₁₆

PICTURE REF	HOIST MODEL	CAPACITY		TYPE SUSPENSION	TROLLEY	APPROXIMATE MIN/MAX I-BEAM SIZE		MIN/MAX FLANGE WIDTH		MINIMUM CURVE RADIUS	
		lb	kg			in	mm	in	mm	in	mm
C	CP-1100	550	250	Swivel Hook	C-087092	4/10	102/254	2 ⁵ / ₈ /4 ⁵ / ₈	67/117	30	762
C	CP-1100	1100	500	Swivel Hook	C-087092	4/10	102/254	2 ⁵ / ₈ /4 ⁵ / ₈	67/117	30	762
C	CP-1200	500	228	Swivel Hook	C-087092	4/10	102/254	2 ⁵ / ₈ /4 ⁵ / ₈	67/117	30	762
C	CP-1200	1000	455	Swivel Hook	C-087092	4/10	102/254	2 ⁵ / ₈ /4 ⁵ / ₈	67/117	30	762
C	CP-1100	2200	1000	Swivel Hook	C-055643	5/12	127/305	3/5	76/127	36	914
C	CP-1200	2000	909	Swivel Hook	C-055643	5/12	127/305	3/5	76/127	36	914
C	CP-1200	4000	1818	Swivel Hook	C-122878	6/18	152/457	3 ³ / ₈ /6	86/152	48	1220

Balancers – Light and Medium



SPRING SUSPENSION BALANCERS

PICTURE REF	TOOL TYPE	PART NUMBER	CAPACITY MINIMUM		CAPACITY MAXIMUM		CABLE TRAVEL		WEIGHT		OVERALL HEIGHT	
			lb	kg	lb	kg	ft	m	lb	kg	ins	mm
A	1DU	52542	0	0	1.1	0.5	4.9	1.5	1.3	0.6	9.1	230
A	2DU	50522	1.1	0.5	2.2	1	4.9	1.5	1.3	0.6	9.1	230
A	3DU	52862	2.2	1	3.1	1.5	4.9	1.5	1.3	0.6	9.1	230
A	4DU	50532	2.2	1	4.4	2	4.9	1.5	1.3	0.6	9.1	230
A	5DU	50542	3.1	1.4	5.3	2.4	4.9	1.5	1.3	0.6	9.1	230
A	10D	50052	4.4	2	11.0	5	7.8	2.4	6.0	2.7	14.5	369
A	15D	50062	11.0	5	15.4	7	7.8	2.4	7.1	3.2	14.5	369
A	22D	50072	13.2	6	22.0	10	7.8	2.4	7.1	3.2	14.5	369

Additional support chain fitted as standard

HOSE REEL SUSPENSION BALANCERS

PICTURE REF	TOOL TYPE	PART NUMBER	CAPACITY MINIMUM		CAPACITY MAXIMUM		FLOW RATE		HOSE TRAVEL		WEIGHT		OVERALL HEIGHT	
			lb	kg	lb	kg	scfm	l/s	ft	m	lb	kg	ins	mm
B	1HU	52702	0	0	1.1	0.5	15.0	7.1	4.9	1.5	2.6	1.2	6.8	173
B	3HU	51462	1.1	0.5	3.1	1.4	15.0	7.1	4.1	1.25	2.6	1.2	6.8	173
B	4HU	51472	1.5	0.7	4.4	2	15.0	7.1	4.1	1.25	3.1	1.4	6.8	173
B	4HI	51722	1.5	0.7	4.4	2	19.7	9.3	3.2	1	3.1	1.4	6.8	173

Additional support chain fitted as standard

Hose reel balancer conversion kit for pistol grip tools

3HU and 4HU Balancers – Part No. 107403

4HI Balancer – Part No. 115193

SPRING SUSPENSION BALANCERS WITH DRUM LOCK FEATURE (Operates only on spring failure)

PICTURE REF	TOOL TYPE	PART NUMBER	CAPACITY MINIMUM		CAPACITY MAXIMUM		CABLE TRAVEL		WEIGHT		OVERALL HEIGHT	
			lb	kg	lb	kg	ft	m	lb	kg	ins	mm
C	10S	50572	4.4	2	11.0	5	7.8	2.4	6.0	2.7	14.5	369
C	15S	50582	11.0	5	15.4	7	7.8	2.4	7.1	3.2	14.5	369
C	22S	50592	13.2	6	22.0	10	7.8	2.4	7.1	3.2	14.5	369

Additional support chain fitted as standard

REACTION FREE SELF-LOCK BALANCERS

PICTURE REF	TOOL TYPE	PART NUMBER	CAPACITY MINIMUM		CAPACITY MAXIMUM		CABLE TRAVEL		WEIGHT		OVERALL HEIGHT	
			lb	kg	lb	kg	ft	m	lb	kg	ins	mm
D	2R	54422	1.5	0.7	2.9	1.3	5.5	1.7	1.1	0.5	4.9	124
D	4R	54432	2.2	1	4.4	2	5.5	1.7	1.1	0.5	12.3	313
E	5R	54442	3.7	1.7	7.7	3.5	7.8	2.4	5.1	2.3	12.3	313
E	10R	54452	6.6	3	13.2	6	7.8	2.4	5.1	2.3	12.3	313

For increased safety use of an additional support chain is advised

Balancers – Super Duty

Features

- rugged malleable iron housing construction – for strength and durability
- internal latch – positively locks drum to prevent load from falling if spring breaks
- tapered drum – compensates for increased spring tension, insuring uniform cable tension throughout travel
- external worm gear load adjustment – permits exact external load balancing to achieve zero gravity
- manual safety-lock – positively stops drum rotation, allowing cable replacement without disassembly

A



NOTE: These models not available for sale in European Economic Area

PIC REF	PART NO	CATALOG NUMBER	CAPACITY		PIC REF	PART NO	CATALOG NUMBER	CAPACITY	
			lb	kg				lb	kg
CP-2100: hook-to-hook distance as shipped: 90" (2286 mm); min. possible: 17" (432 mm); net weight: 46 lb (20.9 kg).									
A	T007611	CP-2100-ABER	10 to 15	4.6 to 6.8	A	T007487	CP-2100-AFER	35 to 50	15.9 to 22.7
A	T007485	CP-2100-ACER	14 to 25	6.4 to 11.4	A	T007488	CP-2100-AGER	49 to 60	20.5 to 27.3
A	T007486	CP-2100-ADER	25 to 40	4.6 to 6.8	A	T020699	CP-2100-AHER	55 to 75	25 to 34.1
CP-2200: hook-to-hook distance as shipped: 83" (2108 mm); min. possible: 17.7" (450 mm); net weight: 61 lb (27.7 kg).									
A	T007490	CP-2200-EJER	70 to 85	31.8 to 38.6	A	T007698	CP-2200-EPER	155 to 180	70.5 to 81.8
A	T007492	CP-2200-EKER	80 to 110	36.4 to 50.0	A	T007494	CP-2200-ERER	175 to 200	79.5 to 90.0
A	T007888	CP-2200-ELER	105 to 145	47.7 to 65.9	A	T007489	CP-2200-ESER	195 to 210	88.6 to 95.5
A	T007482	CP-2200-EMER	135 to 160	61.4 to 72.7	A				
CP-2300: hook-to-hook distance as shipped: 87" (2210 mm); min. possible: 17.7" (450 mm); net weight: 77 lb (35 kg).									
A	T021591	CP-2300-UTER	205 to 235	93 to 107	A	T021593	CP-2300-UWER	250 to 275	114 to 125
A	T021592	CP-2300-UVER	230 to 255	105 to 116	A	T021594	CP-2300-UZER	270 to 300	123 to 136

All models: 7 ft (2.1 m) max. hook travel; rugged, maleable iron housing and steel cable; external load adjustment.

Safety Tips

For safety's sake, always observe these basic rules of hoist and balancer use

- ANSI code B30.16, "Safe Operation of Overhead Hoists" should be read by anyone supervising operators of overhead hoists. Copies may be obtained from ASME, 345 E, 47 St., New York, N.Y. 10017. Among many other requirements, this code calls for the use of safety latch hooks and for a tag located near the operator warning against various unsafe practices.
- Operators should follow the cautions listed on the warning tag. Among these are:
 - DON'T** lift more than rated load.
 - DON'T** lift people or loads over people.
 - DON'T** operate with twisted, kinked or damaged chain.
 - DON'T** remove or obscure the warning label.
- Inspect all air supply and control hoses frequently and replace abraded or cut sections. Be sure your hoists have control systems in which no hoist action will occur should any of the hoses be broken or cut.
- Hoist load chain and hooks should be inspected regularly. Check for stretch, wear, gouge marks, open welds and any indications of peened, hammered or excessively polished surfaces. When chain requires replacement, always use load chain recommended by the hoist manufacturer. Bent hooks should be discarded ... never straightened and re-used.
- Always use a safety chain between the hoist or balancer and some rigid overhead member. The chain must be strong enough to hold the balancer or hoist plus its load if the suspension hook should fail for any reason. Remember too, that balancer capacity is only as great as the beam or member you suspend it from. Check all overhead beams for load carrying capacity! Hooks, their swivels or mounting parts and safety latches, should be inspected periodically for signs of wear. Replace worn parts immediately. Never remove safety latches.
- Hang balancers with drum axis horizontal. This prevents the cable from chafing within the drum. Check the condition of the balancer cable periodically by running a piece of cheesecloth along its entire length. The cloth will "snag" at points beginning to wear. Inspect safety chains and nylon-covered cables visually for signs of wear. Replace any cable or chain and fitting immediately if it shows the slightest wear.