

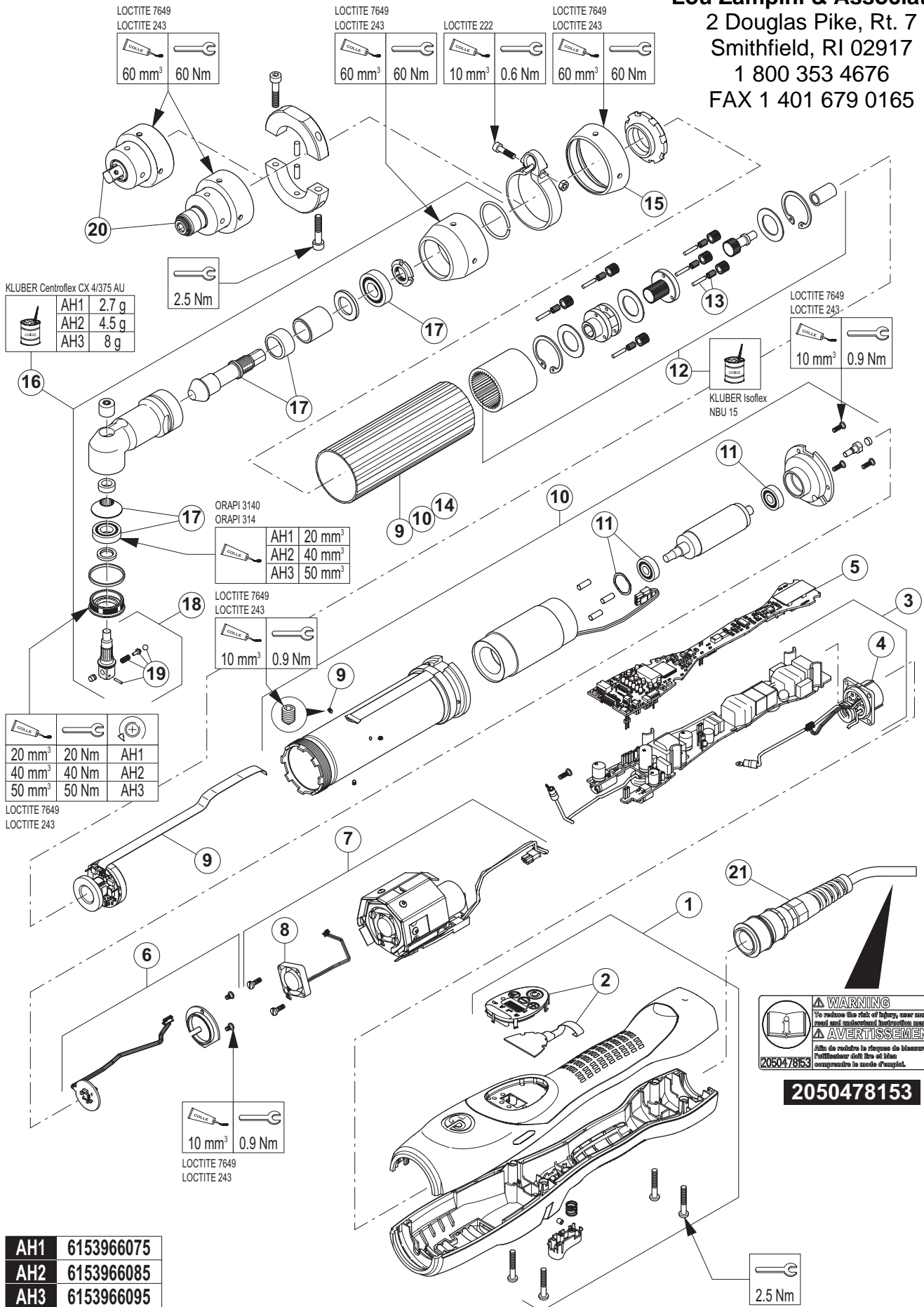
APPENDIX 2 - PART LIST

015396430-00

English

35 / 40

Lou Zampini & Associates
 2 Douglas Pike, Rt. 7
 Smithfield, RI 02917
 1 800 353 4676
 FAX 1 401 679 0165



| | |
|-----|------------|
| AH1 | 6153966075 |
| AH2 | 6153966085 |
| AH3 | 6153966095 |



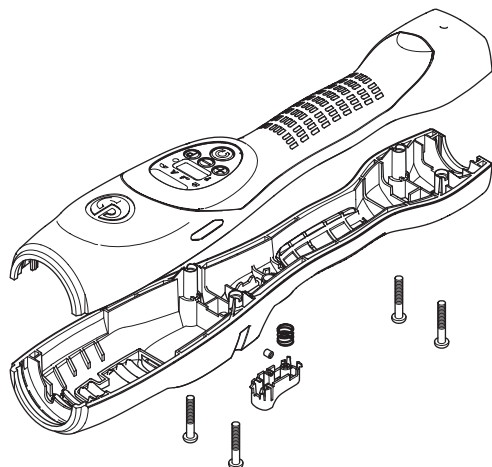
615990430-00

English
36 / 40

PART LIST

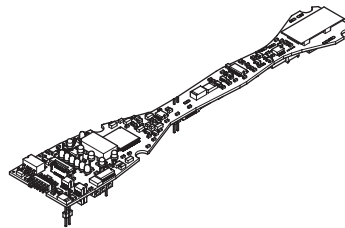
Kit No 1

| Reference | Tool |
|------------|------|
| 6153964995 | |



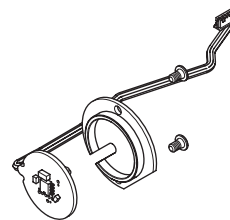
Kit No 5

| Reference | Tool |
|------------|------|
| 6159187995 | |



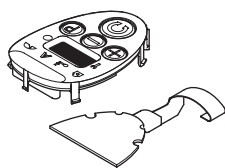
Kit No 6

| Reference | Tool |
|------------|------|
| 6153965015 | |



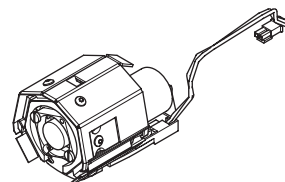
Kit No 2

| Reference | Tool |
|------------|------|
| 6153965005 | |



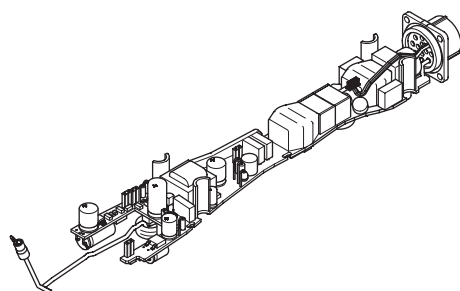
Kit No 7

| Reference | Tool |
|------------|---------------|
| 6153964465 | EAP*2 ; EDP*2 |
| 6153967165 | EAP*1 ; EDP*1 |



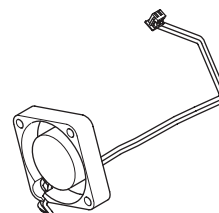
Kit No 3

| Reference | Tool |
|------------|---------------|
| 6159188305 | EAP*2 ; EDP*2 |
| 6159188325 | EAP*1 ; EDP*1 |



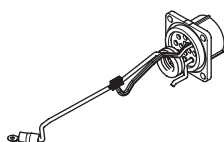
Kit No 8

| Reference | Tool |
|------------|------|
| 6159227025 | |



Kit No 4

| Reference | Tool |
|------------|---------------|
| 6159150545 | EAP*2 ; EDP*2 |
| 6159150585 | EAP*1 ; EDP*1 |



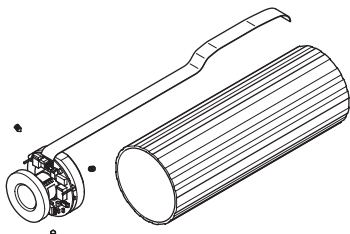
PART LIST

615396430-00

English
37 / 40

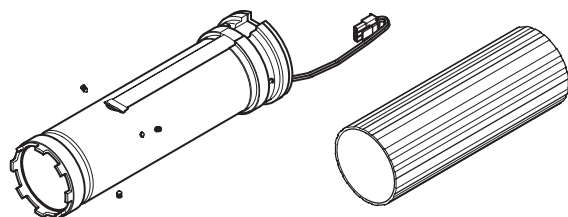
Kit No 9

| Reference | Tool |
|------------|---------------------------------|
| 6153965045 | EAP1.5-15-* |
| 6153965055 | EAP1.5-20-*; EDP1.5-15-* |
| 6153965065 | EAP2-20-* |
| 6153965075 | EAP1.5-26-* |
| 6153965085 | EAP2-30-*; EAP2-40-*; EDP2-24-* |
| 6153965095 | EAP2-65-*; EDP2-33-*; EDP2-43-* |



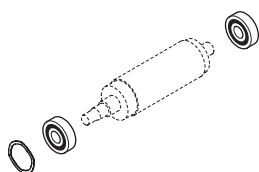
Kit No 10

| Reference | Tool |
|------------|--------------------|
| 6153967065 | EAP1.5-*; EDP1.5-* |
| 6153967075 | EAP2-*; EDP2-* |



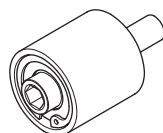
Kit No 11

| Reference | Tool |
|------------|------|
| 6153966005 | |



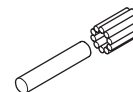
Kit No 12

| Reference | Tool |
|------------|---|
| 6153964955 | EAP2-20-* |
| 6153964965 | EAP1.5-15-*; EAP2-30-*; EAP2-40-*; EDP2-24-* |
| 6153964975 | EAP1.5-20-*; EDP1.5-15-*; EDP2-33-* |
| 6153964985 | EAP1.5-26-*; EAP2-65-*; EDP2-43-* |



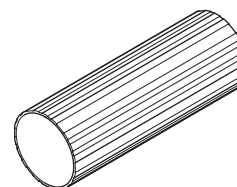
Kit No 13

| Reference | Tool |
|------------|---|
| 6153967125 | EAP1.5-15-*; EAP2-30-*; EDP2-24-*; EAP2-40-*; EAP1.5-20-*; EDP1.5-15-*; EDP2-33-*; EAP1.5-26-*; EAP2-65-*; EDP2-43-* |
| 6153967135 | EAP2-20-* |



Kit No 14

| Reference | Tool |
|------------|--------------------|
| 6155705065 | EAP1.5-*; EDP1.5-* |
| 6155705055 | EAP2-*; EDP2-* |



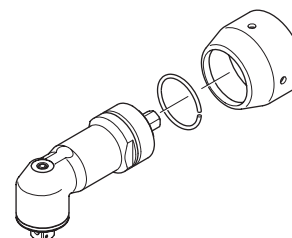
Kit No 15

| Reference | Tool |
|------------|------|
| 6156731245 | |



Kit No 16

| Reference | Tool |
|------------|---|
| 6153966075 | EAP1.5-15-*; EAP1.5-20-*; EAP1.5-26-* EAP2-20-*; EAP2-30-* |
| 6153966085 | EAP2-40-* |
| 6153966095 | EAP2-65-* |



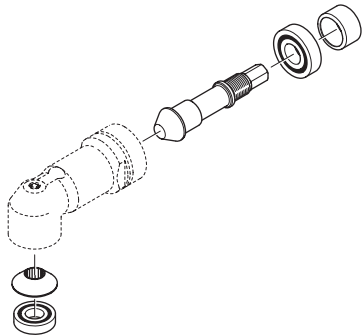
615396430-00

English
38 / 40

PART LIST

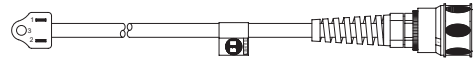
Kit No 17

| Reference | Tool |
|------------|--|
| 6153966045 | EAP1.5-15-* ; EAP1.5-20-* ; EAP1.5-26-* EAP2-20-* ; EAP2-30-* |
| 6153966055 | EAP2-40-* |
| 6153966065 | EAP2-65-* |

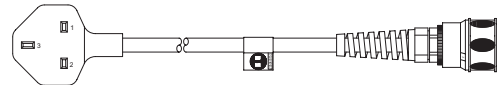


Kit No 21

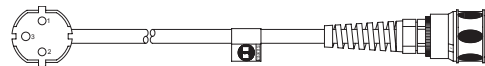
| Reference | Tool |
|------------|--------------|
| 6159174700 | EAP*2; EDP*2 |
| 6159174710 | EAP*1; EDP*1 |
| 6159174720 | EAP*2; EDP*2 |



6159174700 (European)



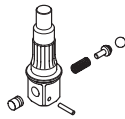
6159174710 (US)



6159174720 (UK)

Kit No 18

| Reference | Tool |
|------------|---|
| 6155210995 | EAP1.5-15-*; EAP1.5-20-*; EAP1.5-26-*; EAP2-20-* ; EAP2-30-* |
| 6155211005 | EAP2-40-* |
| 6155210975 | EAP2-65-* |



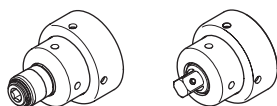
Kit No 19

| Reference | Tool |
|------------|--------------|
| 6153967035 | EAP*1; EAP*2 |



Kit No 20

| Reference | Tool |
|------------|------------------------|
| 6153967145 | EDP1.5-15-*; EDP2-24-* |
| 6153967155 | EDP2-33-*; EDP2-43-* |





PART LIST

0199990430-00

English

39 / 40

