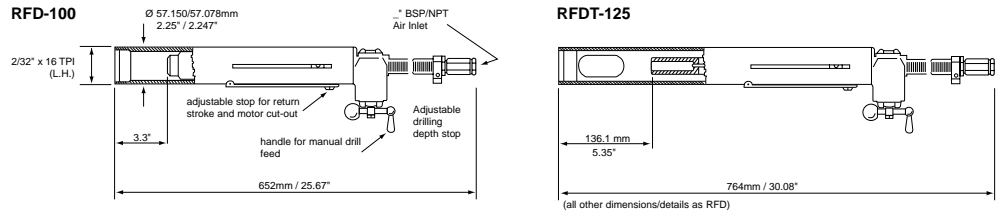


# Accessories



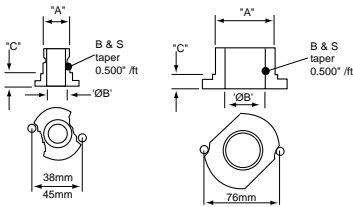
## RFD-100 / RFDT-125

### ACCESSORIES INCLUDED

	PART NO.
	RFD RFDT
• Chuck with key capacity 13mm (1/2")	29142
• Extended Nose (1" x 14 TPI LH nose thread)	251043
• Bayonet Plate – 45mm centres	251063
• Bayonet Plate – 76mm centres	35323

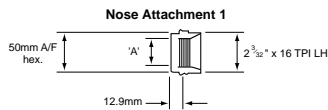
### OPTIONAL ACCESSORIES

	PART NO.
	RFD
• Chuck Key	29242

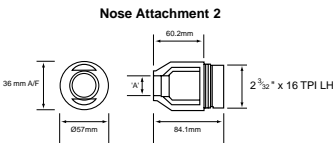


### Bayonet Plates

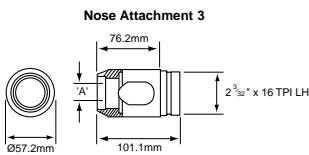
	'A'	'ØB'	'C'	PART NO.
• Locating centres – 38mm	3/4" x 16 TPI (LH)	14.2mm	9.5mm	251053
• Locating centres – 38mm	7/8" x 20 TPI (LH)	14.2mm	9.5mm	30623
• Locating centres – 45mm	1" x 14 TPI (LH)	19.05mm	9.5mm	251063
• Locating centres – 45mm	1 1/8" x 20 TPI (LH)	19.05mm	9.5mm	31113
• Locating centres – 76mm	2 3/32" x 16 TPI (LH)	38.1mm	12.7mm	35323



Nose Attachment 1



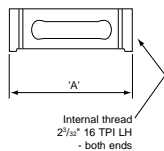
Nose Attachment 2



Nose Attachment 3

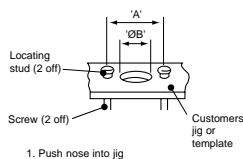
### Nose Attachments

Nose type	To suit bayonet plate centres	Thread 'A'	PART NO.
1	38mm	3/4" x 16 TPI (LH)	235773
2	38mm	3/4" x 16 TPI (LH)	251033
2	45mm	1" x 14 TPI (LH)	251043
3	–	1 1/4" x 12 TPI (LH)	235213
3	–	1 1/2" x 12 TPI (LH)	235223
3	–	2" x 16 TPI (LH)	235343



### Extension Tubes

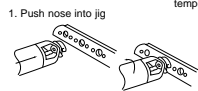
Nominal stroke available to drill	Length 'A'	PART NO.
60mm / 2.36"	150mm / 5.90"	250933
80mm / 3.15"	170mm / 6.69"	250923



### Jig Plates

Centres 'A'	PART NO.	
	LOCATING STUD	SCREW
38mm	17632	17642
45mm	17632	17642
76mm	18422	18432

For dimension 'ØB' please ask for details of our range of drill bushes.



2. Give quarter turn counter clockwise to lock

# Rack Feed Drills

- The Rack Feed Drill is a semi-fixtured (nose mounted) portable drilling unit. Utilising a manual feed through an integral “rack and pinion” mechanism to accommodate the approach drilling and retract cycles. This provides the user with complete control of the feed rate during drilling and allows the user to “feel” the feed rate required. Versatile and flexible, especially when drilling laminates and sandwich materials.
- RFD is suitable for drilling/reaming various materials used in the Aerospace industries e.g. Inconel, Titanium, Steel, Aluminium and Composites.
- A wide speed range from 60 rpm to 2800 rpm is available allowing the best speed to be selected to suit the application.
- RFD-100 provides 102mm (4") of adjustable working stroke length with a 13mm (1/2") chuck capacity.
- RFDT-125 provides 127mm (5") of adjustable working stroke length with a No. 2 Morse Taper drive spindle.
- Automatic motor start/stop – can be set to operate at any point within stroke setting for maximum economy of air.
- Various nose configurations can be provided.



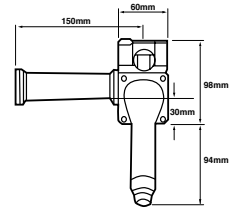
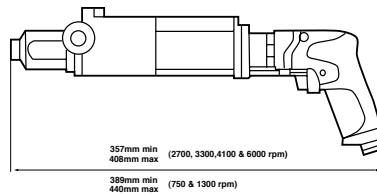
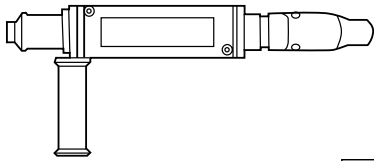
## RFD Selection

DRILL DIA.	MATERIAL			
	Inconel	Titanium	Mild Steel	Aluminium
	Tool type – r/min			
3mm 1/8"	RFD-330/500 RFDT-330/500	RFD-500 RFDT-500	RFD-2800	RFD-2800
5mm 3/16"	RFD-140/330 RFDT-140/330	RFD-330/500 RFDT-330/500	RFD-1850	RFD-2800
6mm 1/4"	RFD-140 RFDT-140	RFD-140/330 RFDT-140/330	RFD-800 RFDT-800	RFD-1850
8mm 5/16"	RFD-140 RFDT-140	RFD-140/330 RFDT-140/330	RFD-800 RFDT-800	RFD-800 RFDT-800
10mm 3/8"	RFD-85/140 RFDT-85/140	RFD-140 RFT-140	RFD-800 RFDT-800	RFD-800 RFDT-800
13mm 1/2"	RFD-60/85 RFDT-60/85	RFD-85/140 RFDT-85/140	RFD-500 RFDT-500	RFD-800 RFDT-800
16mm 5/8"		RFD-85/140 RFDT-85/140	RFD-330 RFDT-330	RFD-800 RFDT-800
19mm 3/4"		RFD-60/85 RFDT-60/85	RFD-85/140 RFDT-85/140	RFD-330/500 RFDT-330/500
25mm 1"			RFD-60/85 RFDT-60/85	RFD-140/330 RFDT-140/330

Use selection data as a guide only

MODEL	PART NUMBER	FREE SPEED	MAX STROKE		OUTPUT SPINDLE	WEIGHT		AIR CONSUMPTION		AIR INLET	MIN. HOSE BORE		SOUND LEVEL
		r/min	mm	in.		kg	lb	l/s	cfm	BSP/NPT	mm	in.	dB(A)
RFD-100-2800	681214	2800	102	4		3.9	8.6	11.8	25	1/4	10	3/8	88
RFD-100-1850	681394	1850	102	4		3.9	8.6	11.8	25	1/4	10	3/8	88
RFD-100-800	680084	800	102	4	Chuck	3.9	8.6	11.8	25	1/4	10	3/8	88
RFD-100-500	680164	500	102	4	13mm	3.9	8.6	11.8	25	1/4	10	3/8	88
RFD-100-330	681244	330	102	4	1/2"	3.9	8.6	11.8	25	1/4	10	3/8	88
RFD-100-140	1457364	140	102	4	capacity	3.9	8.6	11.8	25	1/4	10	3/8	88
RFD-100-85	1457374	85	102	4		3.9	8.6	11.8	25	1/4	10	3/8	88
RFD-100-60	1457384	60	102	4		3.9	8.6	11.8	25	1/4	10	3/8	88
RFDT-125-800	1445654	800	127	5		5.5	12.1	11.8	25	1/4	10	3/8	88
RFDT-125-500	1445664	500	127	5	No. 2	5.5	12.1	11.8	25	1/4	10	3/8	88
RFDT-125-330	1445674	330	127	5	Morse	5.5	12.1	11.8	25	1/4	10	3/8	88
RFDT-125-140	1445504	140	127	5	Taper	5.5	12.1	11.8	25	1/4	10	3/8	88
RFDT-125-85	1445514	85	127	5		5.5	12.1	11.8	25	1/4	10	3/8	88
RFDT-125-60	1445524	60	127	5		5.5	12.1	11.8	25	1/4	10	3/8	88

# Accessories



## CFD-DR750-..

### ACCESSORIES INCLUDED

ITEM	PART NO.		
	6000 & 4100 r/min	3300, 2700 & 1300 r/min	750 r/min*
1 Chuck (without key) capacity 8mm (5/16")	410203		
• Chuck Key	410213		
1 Chuck with key capacity 10mm (3/8")		31132	
• Chuck Key		29232	
• No chuck*			3/8"-24 spindle
2 Tooling Tube 3/4" - 16 UN LH thread	469883	469883	469883
• Sound reduction kit (75 dB(A))	tba	tba	tba

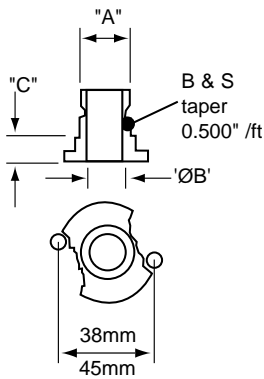
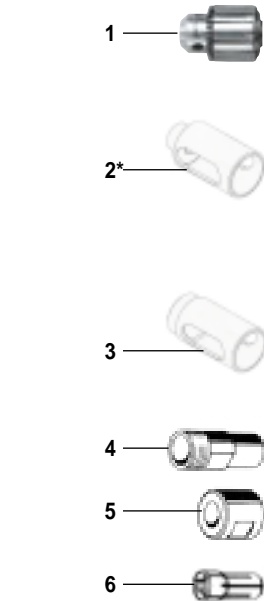
### OPTIONAL ACCESSORIES

	PART NO.
3 Tooling Tube blank (for local customisation)	471873
• Hydraulic Control Unit – 25mm 1" stroke	91942
• Hydraulic Control Unit – 50mm 2" stroke	91952
• Tamper proof HCU cap	110632
• Micrometer depth adjustment module	tba
• Dust extraction kit	tba
• Self collecting mandrel – nose mount	tba
4 Collet Spindle – max capacity Ø9.5mm (3/8")	6155230230
5 Collet Nut	6156071440
6 Collet – capacity Ø2.4 to 3.2mm (1/8")	6155260610
6 Collet – capacity Ø5.2 to 6.0mm (7/32")	6155260620
6 Collet – capacity Ø5.55 to 6.35mm (1/4")	6155260630
6 Collet – capacity Ø7.2 to 8.0mm (5/16")	6155260640
6 Collet – capacity Ø8.7 to 9.5mm (3/8")	6155260640

### Bayonet Plates

	'A'	'ØB'	'C'	PART NO.
• Locating centres – 38mm	3/4" x 16 TPI (LH)	14.2mm	9.5mm	251053
• Locating centres – 38mm	7/8" x 20 TPI (LH)	14.2mm	9.5mm	30623
• Locating centres – 45mm	1" x 14 TPI (LH)	19.05mm	9.5mm	251063
• Locating centres – 45mm	1 1/8" x 20 TPI (LH)	19.05mm	9.5mm	31113

\* Tooling tube (3/4" - 16 UN LH) is suitable for use with 21000 series drill bushings.



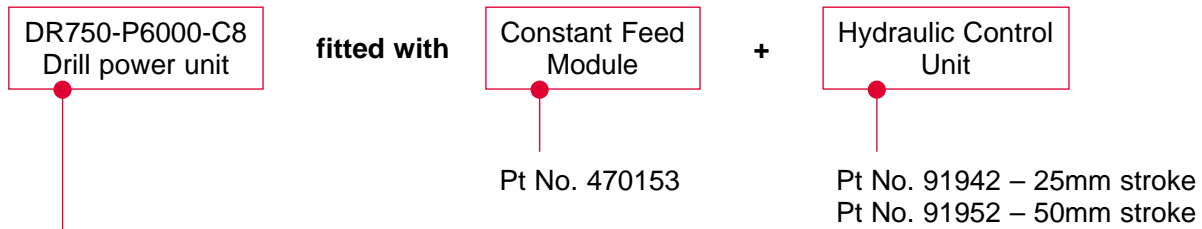
Bushes available on request.  
Please ask for further details.



# CFD – Portable Feed Drill



## How to select ...



MODEL	PART NUMBER	FREE SPEED	STD. CHUCK SIZE	
		r/min	mm	in.
DR750-P6000	1465124	6000	8	5/16
DR750-P4100	1465114	4100	8	5/16
DR750-P3300	1465104	3300	10	3/8
DR750-P2700	1465094	2700	10	3/8
DR750-P1300	1465084	1300	10	3/8
DR750-P750	1465074	750	–	–

## Drilling speed selection guide:

FREE SPEED	TITANIUM	STAINLESS STEEL	SOFT CAST IRON, MILD STEEL	ALUMINIUM, BRASS, COPPER, BRONZE	COMPOSITE
r/min	9-15 m/min		20-35 m/min	50-80 m/min	50-100 m/min
Drill Ø (mm)					
6000	–	–	–	4.0	5.0
4100	–	–	–	6.0	8.0
3300	–	–	3.0	8.0	10.0
2700	–	–	4.0	10.0	–
1300	1.0-2.0	4.0	9.0	–	–
750	3.0	7.0	10.0	–	–

For alternative chuck, or collet spindle, please select from accessories section.

Max. working stroke 50mm  
Sound level: 75dB(A) with silencing kit fitted  
Air inlet: 1/4" BSP/NPT. Vibration level: <2.5 m/s<sup>2</sup>.

MODEL	FREE SPEED	STD. CHUCK SIZE		MOTOR POWER		DYNAMIC THRUST		WEIGHT		AIR FLOW		MIN. HOSE BORE	
	r/min	mm	in.	kW	Hp	N	lbf	kg	lb	l/s	cfm	mm	in.
CFD-DR750-P6000	6000	8	3/8	0.75	1.00	650	146	3.75	1.70	14	30	10	3/8
CFD-DR750-P4100	4100	8	3/8	0.75	1.00	650	146	3.75	1.70	14	30	10	3/8
CFD-DR750-P3300	3300	10	3/8	0.75	1.00	650	146	3.75	1.70	14	30	10	3/8
CFD-DR750-P2700	2700	10	3/8	0.75	1.00	650	146	3.75	1.70	14	30	10	3/8
CFD-DR750-P1300	1300	10	3/8	0.75	1.00	650	146	4.25	1.93	14	30	10	3/8
CFD-DR750-P750	750	–	3/8	0.75	1.00	650	146	4.25	1.93	14	30	10	3/8