



 **Chicago  
Pneumatic™**

 **Desoutter™**

 **GEORGES  
RENAULT™**

## SD Angle Wrench



**Lou Zampini & Associates**  
2 Douglas Pike, Rt. 7  
Smithfield, RI 02917  
1 800 353 4676  
FAX 1 401 679 0165

# Productivity through Ergonomics and Durability

2 Control Options

- Shut Off
- Non Shut Off

Adjustable lever

Contoured friction grip

Ribbed grip allows ventilation of hand

Tamper resistant clutch adjustment

"Warm feel" grip

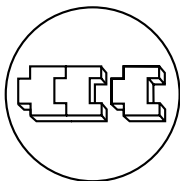
Option of Rotary or Button Reverse (except on open ended tools)

- Rotary – long periods in reverse
- Button – rapid reverse

4 Angle Head Options

- 1/4" Hexagon
- 1/4" Square
- 3/8" Square
- Open Ended Hexagon

Noise level  
73dB(A) ±2



**Modularity = Flexibility = Productivity = Cost Reduction = Profit**



- Desoutter modular system for rapid servicing or changes in tool function
- New motor, clutch and gearbox designs prolonging tool life to over 2.5 million cycles before a major strip down.
- Improved air flow through the tool for faster cycle times.
- Typical torque repeatability better than  $\pm 5.5\%$  ( $\pm 3\sigma$ ).



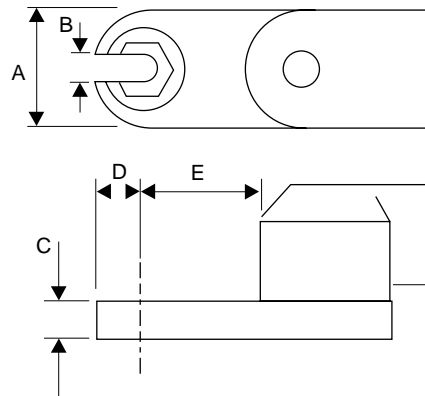
# Performance Data – Open Ended Tools



A



ACROSS FLATS	A	B	C	D	E
mm	in.	in.	in.	in.	in.
17	1.890	0.472	0.551	0.748	3.602
13	1.496	0.276	0.472	0.579	3.134
12	1.496	0.276	0.472	0.579	3.134
10	1.496	0.276	0.472	0.579	3.134
8	1.496	0.276	0.472	0.579	3.134
7	1.496	0.276	0.472	0.579	3.134



## SHUT OFF

PICTURE REF	TOOL TYPE	PART NUMBER	FREE SPEED	OUTPUT	TORQUE RANGE	LENGTH	WEIGHT	AIR FLOW	AIR HOSE BORE	AIR INLET	SOUND LEVEL	VIBRATION
			r/min	hex	lb ft	in.	lb	cfm	in.	NPT	dB(A)	ms <sup>2</sup>
A	SD160-LB240-S-OE17	1463594	240	17	5-11.8	17.83	4.2	18.4	3/8"	1/4"	73	<2.5
A	SD160-LB240-S-OE13	1463604	240	13	5-11.8	17.36	4	18.4	3/8"	1/4"	73	<2.5
A	SD160-LB240-S-OE12	1463614	240	12	5-11.8	17.36	4	18.4	3/8"	1/4"	73	<2.5
A	SD160-LB240-S-OE10	1463734	240	10	5-11.8	17.36	4	18.4	3/8"	1/4"	73	<2.5
A	SD120-LB320-S-OE8	1463744	320	8	3-8.8	17.36	4	18.4	3/8"	1/4"	73	<2.5
A	SD120-LB320-S-OE7	1463754	320	7	3-8.8	17.36	4	18.4	3/8"	1/4"	73	<2.5

## Method of Control

The open ended tools feature a dual action control top.

1. Press lever for tightening.
2. Release lever to mid position to reverse to open socket position.

# Performance Data – Angle Head Tools

A



B



LB = Button Reverse

LR = Rotary Reverse

## SHUT OFF

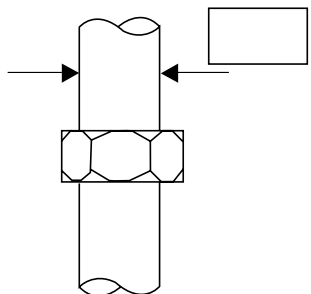
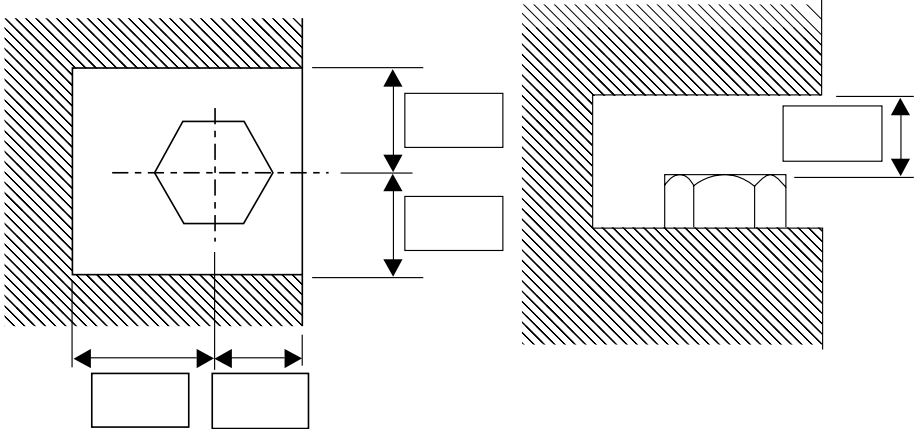
PIC REF	TOOL TYPE	PART NUMBER	FREE SPEED	OUTPUT	TORQUE RANGE	LENGTH		WEIGHT	AIR FLOW	AIR HOSE BORE	AIR INLET	SOUND LEVEL	VIBRATION	
			r/min	hex/sq	lb ft	in.	in.		cfm	in.	NPT	dB(A)	ms <sup>2</sup>	
A	SD070-LB1100-S90-A4H	1463254	1100	1/4" hex	1.8-5.2	12	1.65	0.39	2.5	18.4	3/8"	1/4"	73	<2.5
A	SD070-LB820-S90-A4H	1463244	820	1/4" hex	1.8-5.2	12	1.65	0.39	2.5	18.4	3/8"	1/4"	73	<2.5
A	SD070-LB510-S90-A4H	1463234	510	1/4" hex	1.8-5.2	12	1.65	0.39	2.5	18.4	3/8"	1/4"	73	<2.5
A	SD070-LB320-S90-A4H	1463224	320	1/4" hex	1.8-5.2	12	1.65	0.39	2.5	18.4	3/8"	1/4"	73	<2.5
A	SD070-LR1100-S90-A4H	1463294	1100	1/4" hex	1.8-5.2	12	1.65	0.39	2.5	18.4	3/8"	1/4"	73	<2.5
A	SD070-LR820-S90-A4H	1463284	820	1/4" hex	1.8-5.2	12	1.65	0.39	2.5	18.4	3/8"	1/4"	73	<2.5
A	SD070-LR510-S90-A4H	1463274	510	1/4" hex	1.8-5.2	12	1.65	0.39	2.5	18.4	3/8"	1/4"	73	<2.5
A	SD070-LR320-S90-A4H	1463264	320	1/4" hex	1.8-5.2	12	1.65	0.39	2.5	18.4	3/8"	1/4"	73	<2.5
A	SD070-LB1100-S90-A4S	1463374	1100	1/4" sq	1.8-5.2	12	1.65	0.39	2.4	18.4	3/8"	1/4"	73	<2.5
A	SD070-LB820-S90-A4S	1463364	820	1/4" sq	1.8-5.2	12	1.65	0.39	2.4	18.4	3/8"	1/4"	73	<2.5
A	SD070-LB510-S90-A4S	1463354	510	1/4" sq	1.8-5.2	12	1.65	0.39	2.4	18.4	3/8"	1/4"	73	<2.5
A	SD070-LB320-S90-A4S	1463344	320	1/4" sq	1.8-5.2	12	1.65	0.39	2.4	18.4	3/8"	1/4"	73	<2.5
A	SD070-LR1100-S90-A4S	1463414	1100	1/4" sq	1.8-5.2	12	1.65	0.39	2.4	18.4	3/8"	1/4"	73	<2.5
A	SD072-LR1080-S90-A10S	1463404	820	1/4" sq	1.8-5.2	12	1.65	0.39	2.4	18.4	3/8"	1/4"	73	<2.5
A	SD070-LR510-S90-A4S	1463394	510	1/4" sq	1.8-5.2	12	1.65	0.39	2.4	18.4	3/8"	1/4"	73	<2.5
A	SD070-LR320-S90-A4S	1463384	320	1/4" sq	1.8-5.2	12	1.65	0.39	2.4	18.4	3/8"	1/4"	73	<2.5
B	SD072-LB1080-S90-A10S	1463504	1080	3/8" sq	1.8-5.3	13.9	1.69	0.55	3.1	18.4	3/8"	1/4"	73	<2.5
B	SD095-LB800-S90-A10S	1463494	800	3/8" sq	2.2-7.0	13.9	1.69	0.55	3.1	18.4	3/8"	1/4"	73	<2.5
B	SD130-LB600-S90-A10S	1463484	600	3/8" sq	3.3-9.5	13.9	1.69	0.55	3.1	18.4	3/8"	1/4"	73	<2.5
B	SD209-LB370-S90-A10S	1463474	370	3/8" sq	4.4-15.4	14.8	1.69	0.55	3.3	18.4	3/8"	1/4"	73	<2.5
B	SD300-LB250-S90-A10S	1463464	250	3/8" sq	8.1-22.1	14.8	1.69	0.55	3.3	18.4	3/8"	1/4"	73	<2.5
B	SD072-LR1080-S90-A10S	1463554	1080	3/8" sq	1.8-5.3	13.9	1.69	0.55	3.1	18.4	3/8"	1/4"	73	<2.5
B	SD095-LR800-S90-A10S	1463544	800	3/8" sq	2.2-7.0	13.9	1.69	0.55	3.1	18.4	3/8"	1/4"	73	<2.5
B	SD130-LR600-S90-A10S	1463534	600	3/8" sq	3.3-9.5	13.9	1.69	0.55	3.1	18.4	3/8"	1/4"	73	<2.5
B	SD209-LR370-S90-A10S	1463524	370	3/8" sq	4.4-15.4	14.8	1.69	0.55	3.3	18.4	3/8"	1/4"	73	<2.5
B	SD300-LR250-S90-A10S	1463514	250	3/8" sq	8.1-22.1	14.8	1.69	0.55	3.3	18.4	3/8"	1/4"	73	<2.5

## NON SHUT OFF

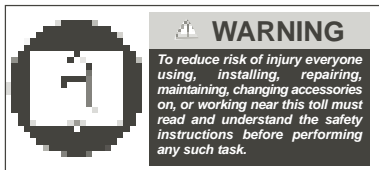
PIC REF	TOOL TYPE	PART NUMBER	FREE SPEED	OUTPUT	TORQUE RANGE	LENGTH		WEIGHT	AIR FLOW	AIR HOSE BORE	AIR INLET	SOUND LEVEL	VIBRATION	
			r/min	hex/sq	lb ft	in.	in.		cfm	in.	NPT	dB(A)	ms <sup>2</sup>	
A	SD070-LB1100-R90-A4H	1463334	1100	1/4" hex	1.8-5.2	12	1.65	0.39	2.5	18.4	3/8"	1/4"	73	8.32
A	SD070-LB820-R90-A4H	1463324	820	1/4" hex	1.8-5.2	12	1.65	0.39	2.5	18.4	3/8"	1/4"	73	8.02
A	SD070-LB510-R90-A4H	1463314	510	1/4" hex	1.8-5.2	12	1.65	0.39	2.5	18.4	3/8"	1/4"	73	4.61
A	SD070-LB320-R90-A4H	1463304	320	1/4" hex	1.8-5.2	12	1.65	0.39	2.5	18.4	3/8"	1/4"	73	3.9
A	SD070-LR1100-R90-A4H	1463654	1100	1/4" hex	1.8-5.2	12	1.65	0.39	2.5	18.4	3/8"	1/4"	73	8.32
A	SD070-LR820-R90-A4H	1463644	820	1/4" hex	1.8-5.2	12	1.65	0.39	2.5	18.4	3/8"	1/4"	73	8.02
A	SD070-LR510-R90-A4H	1463634	510	1/4" hex	1.8-5.2	12	1.65	0.39	2.5	18.4	3/8"	1/4"	73	4.61
A	SD070-LR320-R90-A4H	1463624	320	1/4" hex	1.8-5.2	12	1.65	0.39	2.5	18.4	3/8"	1/4"	73	3.9
A	SD070-LB1100-R90-A4S	1463454	1100	1/4" sq	1.8-5.2	12	1.65	0.39	2.4	18.4	3/8"	1/4"	73	8.32
A	SD070-LB820-R90-A4S	1463444	820	1/4" sq	1.8-5.2	12	1.65	0.39	2.4	18.4	3/8"	1/4"	73	8.02
A	SD070-LB510-R90-A4S	1463434	510	1/4" sq	1.8-5.2	12	1.65	0.39	2.4	18.4	3/8"	1/4"	73	4.61
A	SD070-LB320-R90-A4S	1463424	320	1/4" sq	1.8-5.2	12	1.65	0.39	2.4	18.4	3/8"	1/4"	73	3.9
A	SD070-LR1100-R90-A4S	1463694	1100	1/4" sq	1.8-5.2	12	1.65	0.39	2.4	18.4	3/8"	1/4"	73	8.32
A	SD070-LR820-R90-A4S	1463684	820	1/4" sq	1.8-5.2	12	1.65	0.39	2.4	18.4	3/8"	1/4"	73	8.02
A	SD070-LR510-R90-A4S	1463674	510	1/4" sq	1.8-5.2	12	1.65	0.39	2.4	18.4	3/8"	1/4"	73	4.61
A	SD070-LR320-R90-A4S	1463664	320	1/4" sq	1.8-5.2	12	1.65	0.39	2.4	18.4	3/8"	1/4"	73	3.9
B	SD097-LB1080-R90-A10S	1463584	1080	3/8" sq	2.2-7.1	13.9	1.69	0.55	3.1	18.4	3/8"	1/4"	73	9.5
B	SD130-LB600-R90-A10S	1463574	600	3/8" sq	3.3-9.5	13.9	1.69	0.55	3.1	18.4	3/8"	1/4"	73	7.15
B	SD209-LB370-R90-A10S	1463564	370	3/8" sq	4.4-15.4	14.8	1.69	0.55	3.3	18.4	3/8"	1/4"	73	7.4
B	SD097-LR1080-R90-A10S	1463724	1080	3/8" sq	2.2-7.1	13.9	1.69	0.55	3.1	18.4	3/8"	1/4"	73	9.5
B	SD130-LR600-R90-A10S	1463714	600	3/8" sq	3.3-9.5	13.9	1.69	0.55	3.1	18.4	3/8"	1/4"	73	7.15
B	SD209-LR370-R90-A10S	1463704	370	3/8" sq	4.4-15.4	14.8	1.69	0.55	3.3	18.4	3/8"	1/4"	73	7.4

# Special Heads

Should your application demand a head not within the standard range then please complete the details for the relevant diagram and return it to your local Desoutter support centre.

<b>1. Type of Head</b>			
Crowfoot (closed end)	<input type="checkbox"/>		
Open Ended Head	<input type="checkbox"/>		
<b>2. Torque Control</b>			
Shut Off	<input type="checkbox"/>		
Non Shut Off	<input type="checkbox"/>		
<b>3. Torque</b>			_____
<b>4. Hexagon Size</b>			_____

# Safety Instructions



All tools are designed to operate at a line pressure of 6.3 bar +/- 0.15bar in accordance with ISO2787.

Sound levels +/- 3dB(A)\* measured in accordance with CAGI-PNEUROP test code or PNEUROP PN8NTC1.2. Vibration values\* measured in accordance with ISO 8662.

\*These declared values were obtained by laboratory testing in compliance with stated standards and are not adequate for risk assessments. Values measured in individual work places may be higher than the declared values. The actual exposure values and risk

of harm experienced by an individual are unique and depend upon the way the user works, the workpiece and the work station design, as well as upon the exposure time and the physical condition of the user. We Desoutter cannot be held liable for the consequences of using declared values, instead of values reflecting the actual exposure, in an individual risk assessment in a work place situation over which we have no control.

Tools are CE marked to comply with European Machinery Directive.

Specifications subject to change without prior notice.

Further occupational health and safety information can be obtained from the following web sites

<http://www.osha.gov> (USA)

<http://europe.osha.eu.int> (Europe).

## Specific Safety Instructions for Angle Wrenches

- Never use hand sockets. Use only power drive sockets.
- To reduce the risk of injury, always support the handle securely in the direction opposite of the spindle rotation to minimise torque reaction.

For further information on the general safety instructions for the operation of power tools please refer to the Desoutter Fastening Tools Catalogue or the tool operating instructions supplied with the tool.

