



47135488
Edition 2
February 2014

Air Impulse Wrench (Twin Blade)

Model 180SQ1 and 280SQ1

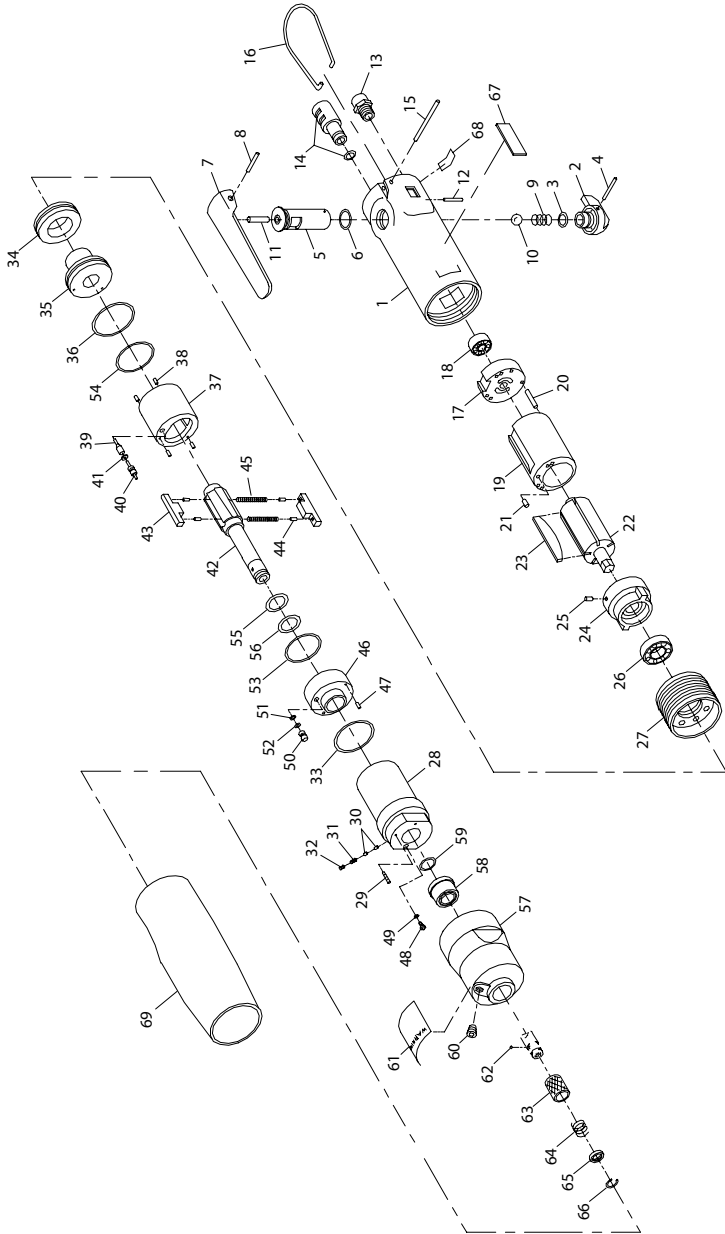
Parts Information



Save These Instructions

IR *Ingersoll Rand*

180SQ1 and 280SQ1, Air Impulse Wrench (Twin Blade) - Exploded View



(Dwg.TPA1331)

180SQ1 and 280SQ1, Air Impulse Wrench (Twin Blade) - Parts List

Item	Part Description	Part Number	Item	Part Description	Part Number
	Motor Housing Assembly			Impulse Unit Drive Assembly	
	for model 180SQ1	180SQ-A40		for model 180SQ1	180PQ-A200
	for model 280SQ1	280SQ-A40		for model 280SQ1	280PQ-A200
1	Motor Housing		28	Housing Assembly	
	for model 180SQ1	180SQ-40		for model 180SQ1	180PQ-A31
	for model 280SQ1	280SQ-40		for model 280SQ1	280PQ-A31
2	Reverse Lever Assembly	180SQ-A328	29	Torque Adjustment Screw	180PQ-230
3	Reverse Lever Seal	EQ106S-119	30	Adjustment Screw Plug Lock (2)	180PQ-283
4	Reverse Lever Pin	EQ106S-152	31	Plug Lock Spring	180PQ-219
5	Reverse Valve Assembly	180SQ-A329	32	Plug Lock Screw	500A-230
6	Reverse Valve Seal	EQ106P-283	† 33	Liner O-ring	180PQ-236
7	Throttle Lever	EQ106S-273	34	Housing Cap	180PQ-207
8	Throttle Lever Pin	EQ106S-120	35	Rear Liner Cover Assembly	180PQ-A212
9	Throttle Valve Spring	EQ106S-51	† 36	Liner Cover O-ring	180PQ-240
10	Throttle Ball	180PQ-929	37	Liner Assembly	
11	Throttle Plunger	180SQ-298		for model 180SQ1	180PQ-A203
12	Cylinder Alignment Pin	EQ106P-99		for model 280SQ1	280PQ-A203
13	Inlet Bushing	EQ106S-565	38	Liner Pin (4)	180PQ-298
14	Exhaust Deflector Assembly	180PQ-A23	39	Relief Valve	
15	Deflector Retaining Pin	EQ106P-152		for model 180SQ1	180PQ-222
16	Suspension Bail	EQ106P-365		for model 280SQ1	280PQ-222
	Motor Assembly		40	Spring Guide Assembly	
	for model 180SQ1	180SQ-A53		for model 180SQ1	180PQ-A255
	for model 280SQ1	280SQ-A53		for model 280SQ1	280PQ-A255
	Rear End Plate Assembly	180PQ-A12	† 41	Spring Guide Seal	180PQ-272
17	Rear End Plate	180PQ-12	42	Drive Shaft	
18	Rear Rotor Bearing	500A-22		for model 180SQ1	180PQ-626
19	Cylinder Assembly			for model 280SQ1	280PQ-626B
	for model 180SQ1	180SQ-A3	43	Blade Assembly (2)	
	for model 280SQ1	280SQ-A3		for model 180SQ1	180PQ-A267
20	Rear End Plate Alignment Pin	180SQ-153		for model 280SQ1	280PQ-A267
21	Front End Plate Alignment Pin	2400P-152	44	Blade Assembly Pin (2 per assembly)	500A-120
22	Rotor		† 45	Blade Spring (2)	180PQ-568
	for model 180SQ1	180PQ-53	46	Front Liner Cover Assembly	180PQ-A211
	for model 280SQ1	280PQ-53	47	Liner Cover Pin	180PQ-232
23	Vane Packet (set of 5 Vanes)		48	Oil Plug	180PQ-277
	for model 180SQ1	180PQ-42-5	† 49	Oil Plug Seal	EQ106P-288
	for model 280SQ1	280PQ-42-5	50	Oil Stop Cap Assembly	180PQ-A38
	Front End Plate Assembly	180PQ-A11	51	Stop Cap O-ring	EQ106P-288
24	Front End Plate	180PQ-11	† 52	Back-up Ring	380SQ-272
25	Alignment Pin	380SQ-298	† 53	Front Liner Seal	EQ104S-236
26	Front End Plate Bearing	500P-22	† 54	Rear Liner Seal	180PQ-273
27	Front End Plate Spacer	180PQ-41	† 55	Drive Shaft Seal	180PQ-271

180SQ1 and 280SQ1, Air Impulse Wrench (Twin Blade) - Parts List

Item	Part Description	Part Number	Item	Part Description	Part Number
† 56	Seal Back-up Ring	380PQ-272	*	Drive Shaft Assembly (optional 318" Sq Drive)	180P-A626
	Mechanism Cover Assembly			Socket Retaining Pin	5020-716
	for model 180SQ1	180PQ-A727		Retaining Pin Spring	401-718
	for model 280SQ1	280PQ-A727	*	Motor Tune-up Kit (includes illustrated items 18, 23 and 26)	
57	Mechanism Cover			for model 180SQ1	180PQ-K500
	for model 180SQ1	180PQ-727		for model 280SQ1	280PQ-K500
	for model 280SQ1	280PQ-727			
58	Cover Bushing	180PQ-641	*	Motor Tune-up Kit (includes illustrated items	
59	Bushing Spacer	180PQ-229	*	Items 33,36,41,45,49,52,53,54,55 and 56)	180PQ-K600
60	Adjustment Hole Plug	180PQ-95	*	Fluid Replacement Kit (includes Fluid Syringe, Fill Tube and 4 oz [31 mL] of Replacement Fluid)	EQ106S-K400
61	Warning Label			Replacement Fluid (4 oz)	EQ106S-400-1
	for 180SQ1 and 280SQ1	WARNING-2-99			
	for 180SQ1-EU and 280SQ1-EU	EU-99	*	Tool Kit (includes all the specialized tooling required to repair these tools and consists of two Spanner Plugs, a Tee Wrench with a special tip, an O-ring Installer Fixture and a pressing fixture that has a Disassembly Arbor and Pressing Sleeve)	180PQ-99
	Bit Chuck Assembly	180PQ-A667			
62	Bit Retaining Ball	EQ104S-929			
63	Bit Retaining Sleeve	EQ104S-930			
64	Retaining Sleeve Spring	EQ104S-931			
65	Spring Seat	EQ104S-932			
66	Retaining Ring	EQ104S-933			
67	Nameplate				
	for model 180SQ1	180SQ-301			
	for model 180SQ1-EU	180SQ1-EU-301			
	for model 280SQ1	280SQ-301			
	for model 280SQ1-EU	280SQ1-EU-301			
68	Oil Daily Label	500P-69			
69	Rubber Housing Boot				
	for model 180SQ1	180SQ-2			
	for model 280SQ1	280SQ-2			
70	Rotation Label (for -EU models only)				
	forward	7802R-EU-F99			
	reverse	7802R-EU-R99			

* Not Illustrated

† Indicates Motor Tune-Up Kit.

Parts and Maintenance

When the life of the tool has expired, it is recommended that the tool be disassembled, degreased and parts be separated by material so that they can be recycled.

Tool repair and maintenance should only be carried out by an authorized Service Center.

Refer all communications to the nearest **Ingersoll Rand** Office or Distributor.

Related Documentation

For additional information refer to:

Product Safety Information Manual 04584983.

Product Information Manual 47133053.

Maintenance Information Manual 47109509.

Manuals can be downloaded from ingersollrandproducts.com

Notes:

Notes:

Notes:

ingersollrandproducts.com

© 2014 Ingersoll Rand

