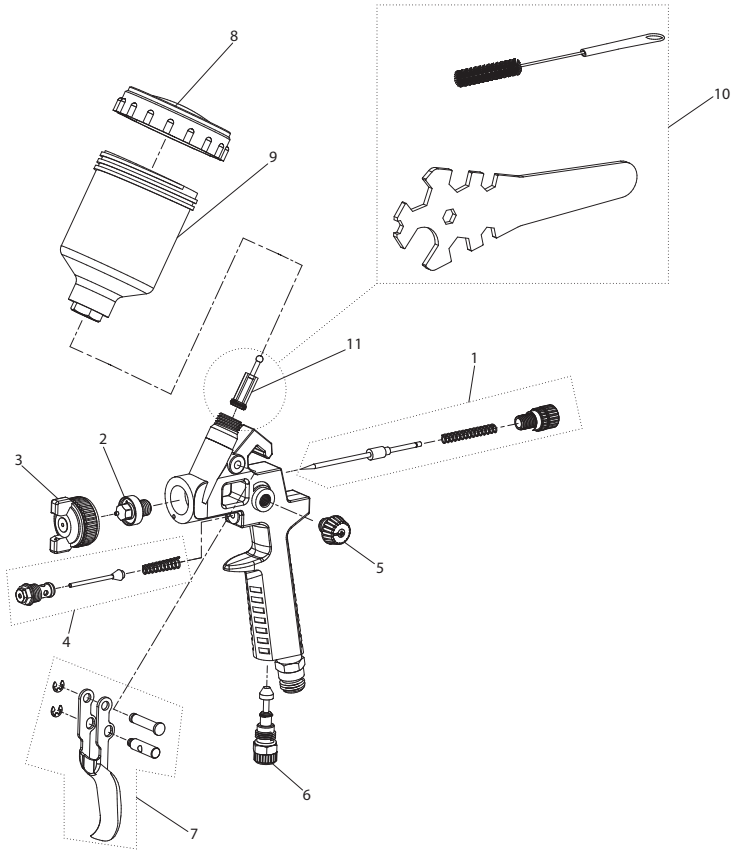


Model 200G Paint Sprayer Exploded Diagram



(Dwg. TP2145)

Model 200G Paint Sprayer Parts List

| Item | Part Description | Part Number | Item | Part Description | Part Number |
|------|--------------------|-------------|------|------------------|-------------|
| 1 | Fluid Needle Kit | 200G-K20 | 7 | Trigger Kit | 200G-K80 |
| 2 | Fluid Nozzle | 200G-30 | 8 | Cup Lid | 200G-90 |
| 3 | Air Cap | 200G-40 | 9 | Cup | 200G-100 |
| 4 | Valve Kit | 200G-K50 | 10 | Accessories Kit | 200G-200 |
| 5 | Pattern Controller | 200G-60 | 11 | Filter | 200G-1727 |
| 6 | Air Controller | 200G-70 | | | |

Parts and Maintenance

When the life of the tool has expired, it is recommended that the tool be disassembled, degreased and parts be separated by material so that they can be recycled.

Tool repair and maintenance should only be carried out by an authorized Service Center.

Refer all communications to the nearest **Ingersoll Rand** Office or Distributor.

Related Documentation

For additional information refer to:

Product Safety Information Manual 16576563.

Product Information Manual 47083068.

Maintenance Information Manual 16577645.

Manuals can be downloaded from ingersollrandproducts.com