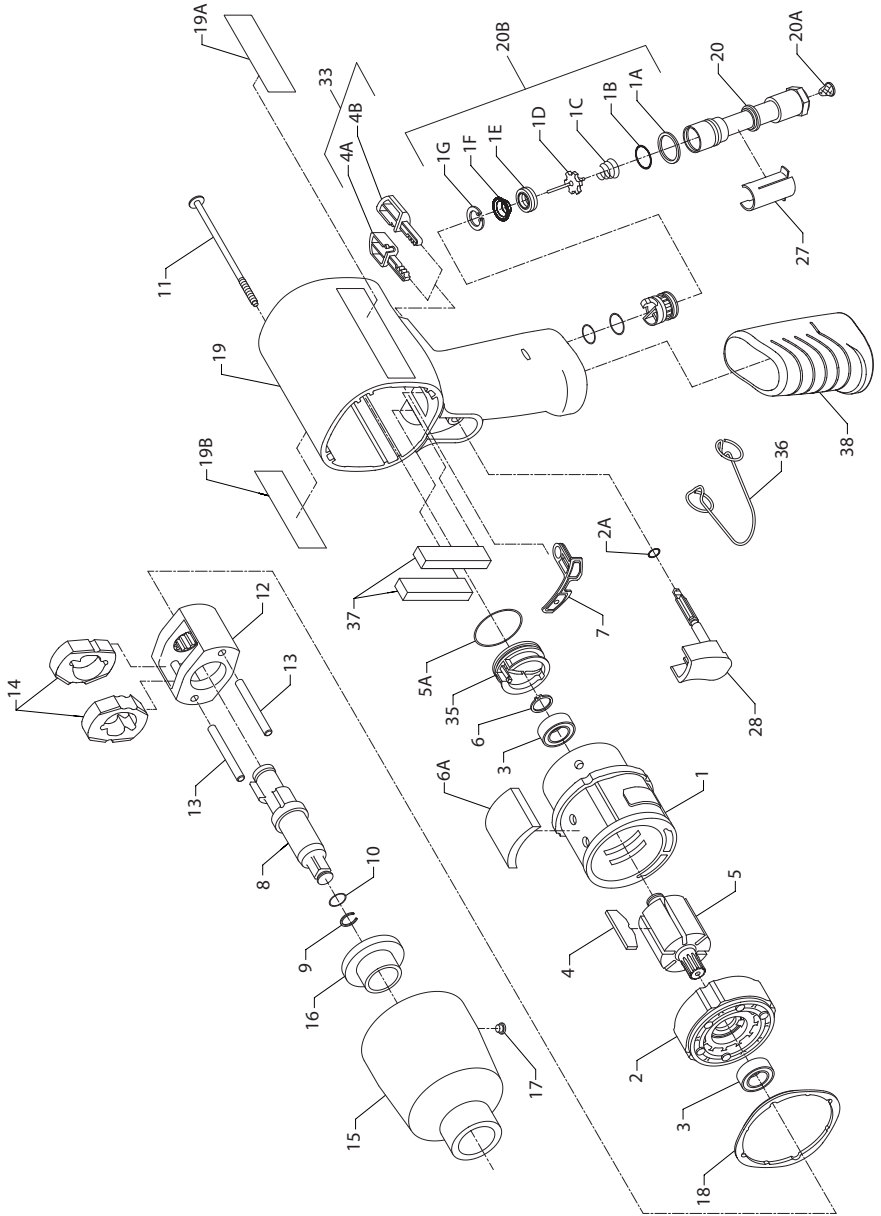


2132G Air Impact Wrench - Exploded View



(Dwg. 45664562)



2132G Air Impact Wrench - Parts List

Item	Part Description	Part Number	Item	Part Description	Part Number
1	Cylinder	2135-3	• 28	Trigger Assembly	2131-A93
2	Front End Plate	2131-11	2A	Trigger O-ring	---
3	Rotor Bearing (2)	2131-97	30	Reverse Valve Assembly	2131-A329
• 4	Vane Packet (set of 6 Vanes) (yellow)	2131-42A-6	3A	Reverse Valve O-ring (top)	---
5	Rotor	2131-53	3B	Reverse Valve O-ring (bottom) (blue)	---
6	Rear Rotor Bearing Retainer	2131-6	33	Button Kit	SN2131-K75
6A	Silencer	2131QT-311	4A	Forward Button	---
• 7	Motor Gasket	2131-283	4B	Reverse Button	---
8	Anvil Assembly (1/2" square drive)	231B-A626	35	Power Management Assembly	2131-A249
• 9	Socket Retainer	2135-425	5A	Power Management Dial Seal	---
• 10	Socket Retainer O-ring	R1A-159	36	Inlet Clip Removal Tool	2131-322
11	Hammer Case Screw (4)	2131-638	37	Silencer (2)	2131S-310
	Hammer Frame Assembly	2131-A703	38	Grip	2132G-747
12	Hammer Frame	2131-703	*	Grease (1 lb) (for external lubrication of the impact mechanism)	115-1LB
13	Hammer Pin (2)	2131-704			
14	Hammer (2)	231XP-724	*	Grease (for lubrication when disassembling and assembling the impact mechanism)	
15	Hammer Case Assembly	2131A-A727			
16	Hammer Case Bushing	2131A-941		1 lb	105-1LB
17	Hammer Case Grease Fitting	D0F9-879		8 lb	105-8LB
• 18	Hammer Case Gasket	2131-36	*	Protective Cover	2131-P32
19	Housing Assembly	2132-D40	*	Grease Gun	R000A2-228
19A	Nameplate Label	2132G-300A	*	Air Line Lubricating Oil	
19B	Information/Warning Label	2132G-301A		1 Pint	10P
20	Inlet Bushing Assembly	2131-A565		1 Gallon	10G
20A	Inlet Bushing Screen	5RA-61			
20B	Inlet Parts Kit	2135-K303			
1A	Washer	---			
1B	Inlet Bushing Seal	---			
1C	Tilt Valve Spring	---			
1D	Tilt Valve	---			
1E	Tilt Valve Seat	---			
1F	Tilt Valve Seat Support	---			
1G	Tilt Valve Seat Retainer	---			
27	Inlet Retainer Clip	2131-57			

* Not Illustrated.

- To keep downtime to a minimum, it is desirable to have on hand certain repair parts. We recommend that you stock one (pair or set) of each part indicated by a Bullet (•) for every four tools in service.

Parts and Maintenance

When the life of the tool has expired, it is recommended that the tool be disassembled, degreased and parts be separated by material so that they can be recycled.

Tool repair and maintenance should only be carried out by an authorized Service Center.

Refer all communications to the nearest **Ingersoll Rand** Office or Distributor.

Related Documentation

For additional information refer to:

Air Impact Wrench Product Safety Information Manual 04580916.

Air Impact Wrench Product Information Manual 80164718.

Manuals can be downloaded from ingersollrandproducts.com.



ingersollrandproducts.com
© 2014 Ingersoll Rand

80164726
Edition 5
January 2014