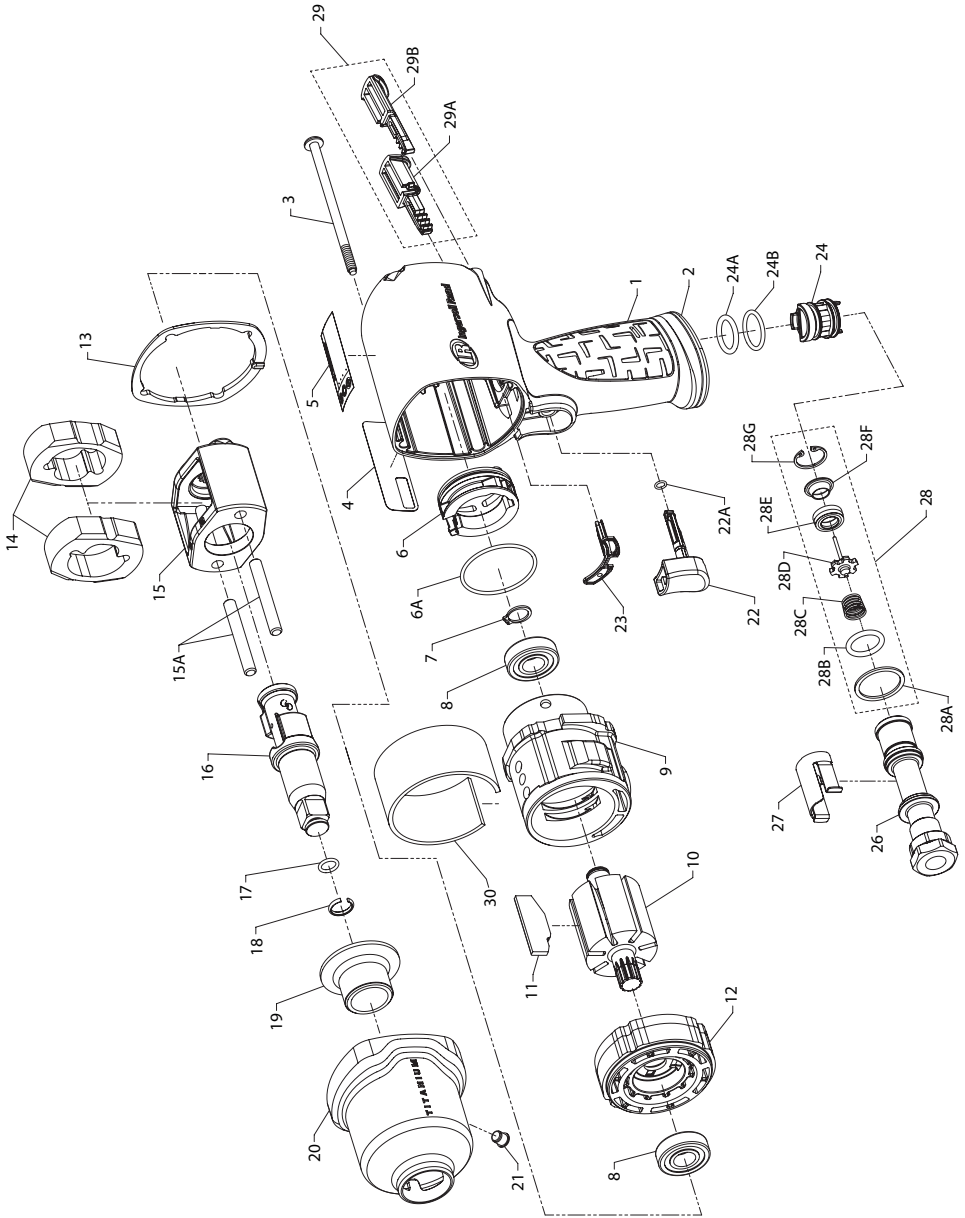


2135XPTiMAX Air Impacttool™ - Exploded View



(Dwg. 45536026)



2135XPTIMAX Air Impactool™ - Parts List

Item	Part Description	Part Number	Item	Part Description	Part Number
*	Housing Assembly	2135XPTIMAX-A40	22A	O-Ring, Trigger	---
1	Housing	---	† 23	Gasket, Motor	2131-283
2	Exhaust Deflector	---	*	Reverse Valve Assembly	2131-A329
4	Information Label	---	24	Reverse Valve	---
5	Warning Label	---	24A	O-Ring, Reverse Valve (Top-Black)	---
23	Gasket, Motor	---	24B	O-Ring, Reverse Valve (Bottom-Blue)	---
*	Reverse Valve Assembly	---	*	Inlet Bushing Assembly	2135-D565A
29	Button Kit	---	26	Inlet Bushing	---
3	Screw, Hammer Case (4 required)	2135-638	27	Inlet Clip	2131-57
4	Information Label	2135XPTIMAX-300	28	Inlet Parts Kit	2135-K303
5	Warning Label	WARNING-2-99	28A	Washer	---
*	Power Regulator Assembly	2135-D249A	28B	O-Ring, Seal	---
6	Power Regulator	---	28C	Throttle Spring	---
6A	O-Ring, Power Regulator	---	28D	Throttle Valve	---
7	Retaining Ring	2131-6	28E	Valve Seat	---
8	Ball Bearing (2 required)	2131-97	28F	Seat Support	---
9	Cylinder	2135-3	28G	Retainer	---
10	Rotor	2135-53	29	Button Kit	2135-K75
† 11	Vane Pack (set of 7)	2135-42A-7	29A	Forward Button	---
12	End Plate	2131-11	29B	Reverse Button	---
† 13	Hammer Case Gasket	2135-36	30	Silencer	2131QT-311
*	Hammer Kit	2135-THK1	*	Tune-Up Kit	2135-TK2
13	Hammer Case Gasket	---	6A	O-Ring, Power Regulator	---
14	Hammer (2)	---	7	Retaining Ring	---
15A	Hammer Pin (2)	---	8	Ball Bearing (2)	---
*	Anvil Assembly	---	11	Vane Pack (set of 7)	---
*	Kit Grease	---	13	Hammer Case Gasket	---
*	Hammer Frame Kit	2135-K703	17	O-Ring	---
15	Hammer Frame	---	18	Socket Retainer	---
15A	Hammer Pin (2)	---	22A	O-Ring, Trigger	---
*	Kit Grease	---	23	Gasket, Motor	---
*	Anvil Assembly	231B-A626	24A	O-Ring, Reverse Valve (Top-Black)	---
16	Anvil	---	24B	O-Ring, Reverse Valve (Bottom-Blue)	---
*	Socket Retainer Kit	---	28	Inlet Parts Kit	---
† *	Socket Retainer Kit	2125QT-K425	*	Inlet Clip Removal Tool	2131-322
17	O-Ring or Socket Retainer Spring	---	† *	Air Care Kit (grease gun, grease, oil)	115-LBK1
18	Socket Retainer	---	*	Grease (replacement tube for -LBK1)	115-4T
19	Bushing, Hammer Case	2135-941	*	Air Tool Oil (4 oz. bottle)	1024
*	Hammer Case Assembly	2135-D727A	*	Grease (1 lb can)	105-1LB
19	Bushing, Hammer Case	---	*	Grease (8 lb can)	105-8LB
20	Hammer Case	---	*	Grease Gun	R000A2-228
21	Grease Fitting	---			
21	Grease Fitting	130SR-188			
† *	Trigger Assembly	2135-D93B			
22	Trigger	---			

* Not illustrated.

† To keep downtime to a minimum, it is desirable to have certain repair parts on hand. We recommend that you stock one (pair or set) of each part indicated by a (†) for every four tools in service.

Parts and Maintenance

When the life of the tool has expired, it is recommended that the tool be disassembled, degreased and parts be separated by material so that they can be recycled.

Tool repair and maintenance should only be carried out by an authorized Service Center.

Refer all communications to the nearest **Ingersoll Rand** Office or Distributor.

Related Documentation

For additional information refer to:

Air Impact Wrench Product Safety Information Manual 04580916.

Air Impact Wrench Product Information Manual 48489199.

Manuals can be downloaded from ingersollrandproducts.com.



ingersollrandproducts.com
© 2014 Ingersoll Rand

48489181
Edition 2
January 2014