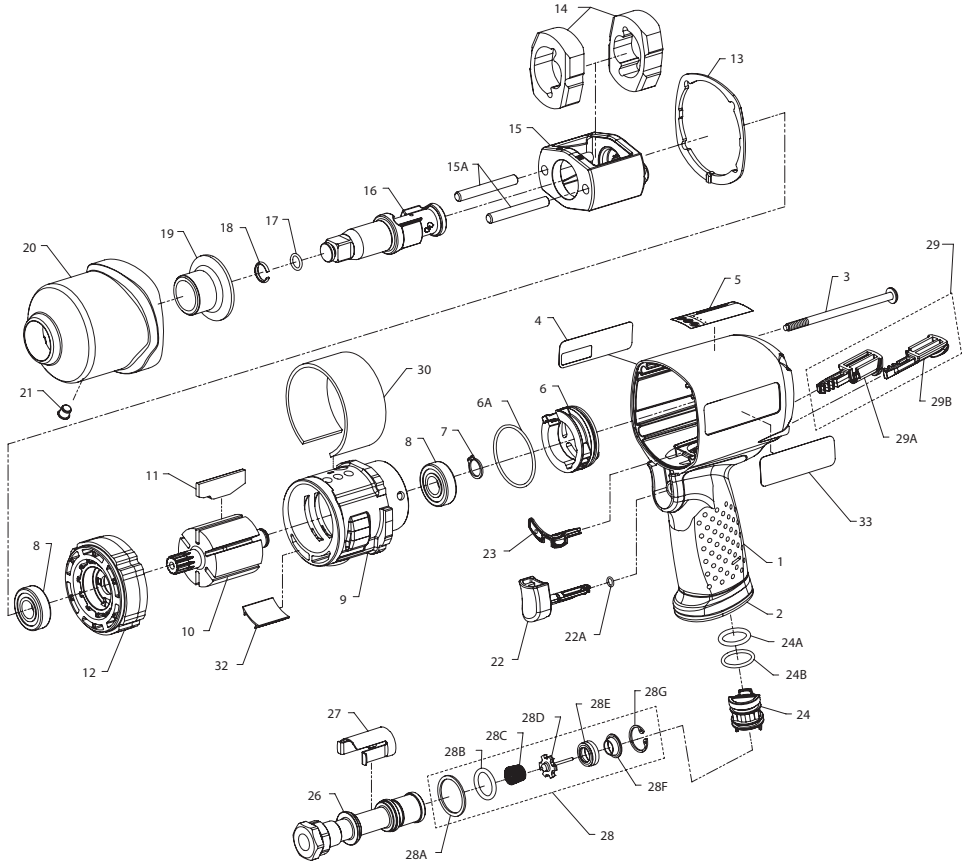


2350XP Air Impactool™ - Exploded View



(Dwg. 48622583)



2350XP Air Impactool™ - Parts List

Item	Part Description	Part Number	Item	Part Description	Part Number
*	Housing Assembly	2350XP-A40	21	Grease Fitting	1305R-188
1	Housing	---	† *	Trigger Assembly	2135-D93B
*	Silencer (2)	---	22	Trigger	---
2	Exhaust Deflector	---	22A	O-Ring, Trigger	---
4	Information Label	---	† 23	Gasket	2131-283
5	Warning Label	---	*	Reverse Valve Assembly	2131-A329
23	Gasket	---	24	Reverse Valve Assembly	---
24	Reverse Valve Assembly	---	24A	O-Ring, Reverse Valve (top)	---
29	Button Kit	---	24B	O-Ring, Reverse Valve (bottom)	---
33	Name Plate	---	26	Inlet Bushing Assembly (includes 27, 28)	2135-D565A
3	Screw, Hammer Case (4 required)	2135-638	27	Inlet Clip	2131-57
4	Information Label	2350XP-300	28	Inlet Parts Kit	2135-K303
5	Warning Label	WARNING-2-99	28A	Washer	---
*	Power Regulator Assembly	2135-D249A	28B	O-Ring, Seal	---
6	Power Regulator	---	28C	Throttle Spring	---
6A	O-Ring, Power Regulator	---	28D	Throttle Valve	---
7	Retaining Ring	2131-6	28E	Valve Seat	---
8	Ball Bearing (2 required)	2131-97	28F	Seat Support	---
9	Cylinder	2135-3	28G	Retainer	---
10	Rotor	2131-53	29	Button Kit	2135-K75
† 11	Vane Pack (set of 6)	2131-42A-6	29A	Forward Button	---
12	End Plate	2131-11	29B	Reverse Button	---
† 13	Hammer Case Gasket	2135-36	30	Exhaust Silencer	2131QT-311
*	Hammer Kit	2135-THK1	32	Inlet Baffle	2130-318
13	Hammer Case Gasket	---	*	Tune-Up Kit	2135-TK2
14	Hammer (2)	---	6A	O-Ring, Power Regulator	---
15A	Hammer Pin (2)	---	7	Retaining Ring	---
16	Anvil Assembly	---	8	Ball Bearing (2)	---
*	Kit Grease	---	11	Vane Pack	---
*	Hammer Frame Assembly Kit	2135-K703	13	Hammer Case Gasket	---
15	Hammer Frame	---	17	O-Ring	---
15A	Hammer Pin (2)	---	18	Retaining Clip	---
*	Kit Grease	---	22A	O-Ring, Trigger	---
*	Anvil Assembly	231B-A626	23	Gasket	---
16	Anvil	---	24A	O-Ring, Reverse Valve (top)	---
17	O-Ring	---	24B	O-Ring, Reverse Valve (bottom)	---
18	Socket Retainer	---	28	Inlet Parts Kit	---
† *	Socket Retainer Kit	2125QT-K425	*	Inlet Clip Removal Tool	2131-322
17	O-Ring, Anvil	---	† *	Air Care Kit (grease gun, grease, oil)	115-LBK1
18	Socket Retainer	---	*	Grease (replacement tube for - LBK1)	115-4T
19	Bushing, Hammer Case	2135-941	*	Air Tool Oil (4 oz. Bottle)	10Z4
*	Hammer Case Assembly	2135QI-D727A	*	Grease (1 lb can)	105-1LB
19	Bushing, Hammer Case	---	*	Grease (8 lb can)	105-8LB
20	Hammer Case	---	*	Grease Gun	R000A2-228
21	Grease Fitting	---			

* Not illustrated.

† To keep downtime to a minimum, it is desirable to have certain repair parts on hand. We recommend that you stock one (pair or set) of each part indicated by a (†) for every four tools in service.

Parts and Maintenance

When the life of the tool has expired, it is recommended that the tool be disassembled, degreased and parts be separated by material so that they can be recycled.

Tool repair and maintenance should only be carried out by an authorized Service Center.

Refer all communications to the nearest **Ingersoll Rand** Office or Distributor.

Related Documentation

For additional information refer to:

Product Safety Information Manual 04580916.

Product Information Manual 48622419.

Manuals can be downloaded from www.ingersollrandproducts.com.



www.ingersollrandproducts.com

© 2012 Ingersoll-Rand, plc

48622427

Edition 1

August 2012