



16584047
Edition 4
February 2014

Air Angle Wrench

7RL Series

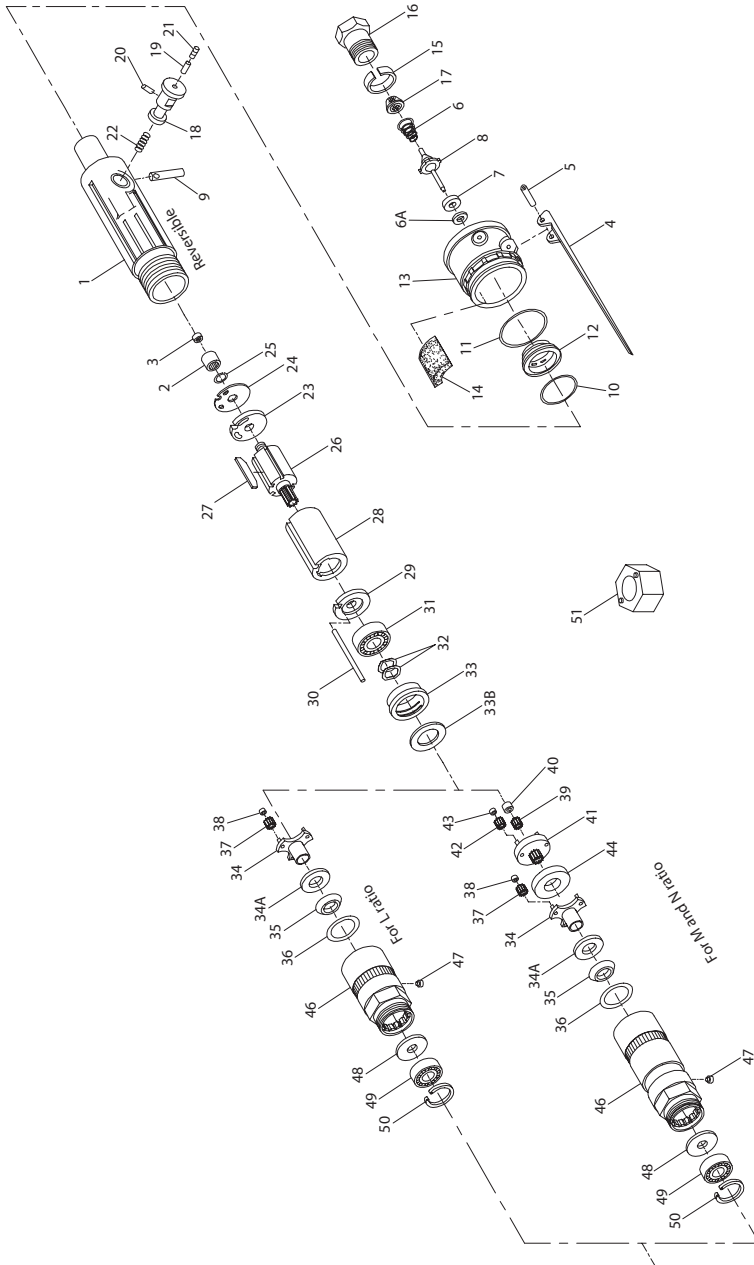
Parts Information



Save These Instructions

IR Ingersoll Rand®

Motor Assembly, 7RL Series Angle Wrench - Exploded View



(Dwg. TPA893-4)

Motor Assembly, 7RL Series Angle Wrench - Parts List

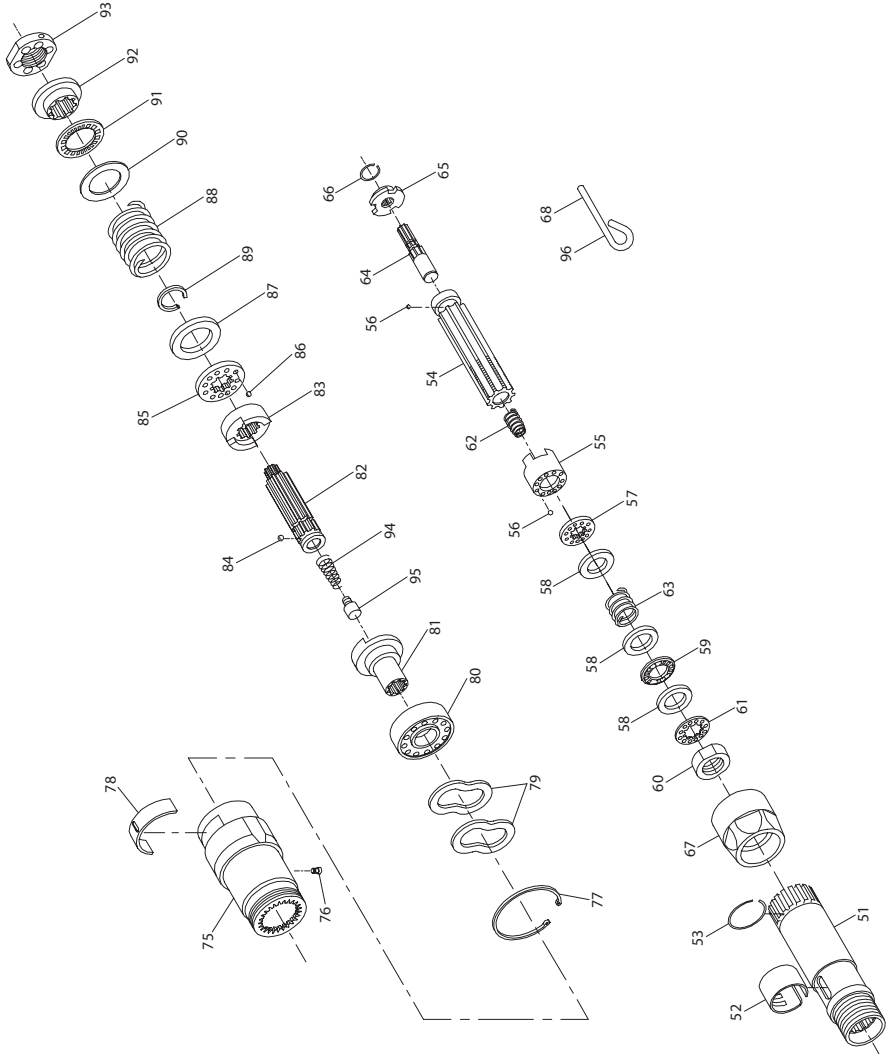
Item	Part Description	Part Number	Item	Part Description	Part Number
	Motor Housing Assembly		33	Rotor Bearing Housing	7AH-13
	for 7RL models ending in -EU (with standard length lever)	7RL-EU-A40	33B	Bearing Housing Spacer	7AH-81
	for 7RL model not ending in -EU (with standard length lever)	7RL-A40	34	Spindle Assembly	
	for 7RL models ending in -EU (with long length lever)	7RL-EU-AL40		for 7RLN	7LK-A8
	for 7RL models not ending in -EU (with long length lever)	7RL-AL40		for 7RLM	7LL-A8
1	Motor Housing			for 7RLM	7LM-A8
	for models ending in -EU	7RL-EU-B40	34A	Spindle	
*	for all other housings	7RL-B40	35	for 7RLN	7LK-8
	Warning Label		36	for 7RLM	7LL-8
	for models ending in -EU	EU-99	35	for 7RLM	7LJ-8
‡ 2	for all other models	WARNING-7-99	35	Seal Retaining Washer	7L-303
	Rear Rotor Bearing	7AH-24	‡ • 36	Seal Support	5RAK-5
*	Throttle Valve Plunger Bushing	5RLK2C-91	‡ • 36	Seal	182A53-610
3	Rotor Bearing Nut	7AH-105A	37	Spindle Planet Gear Assembly (3)	
4	Throttle Lever			for 7RLN (21 teeth)	7AK-A10
	standard length	7L-273		for 7RLL (22 teeth)	7AL-A10
	long length	7L-L273	for 7RLM (18 teeth)	7AJ-A10	
5	Throttle Lever Pin	7L-120	38	Planet Gear Bearing (1 for each Gear)	
‡ 6	Throttle Valve Spring	7L-51		for 7RLL and 7RLN	7AK-500
6A	Throttle Valve Seat Support	7RAK-304	• 39	for 7RLM	7AJ-500
‡ 7	Throttle Valve Seat	7RAK-303	• 40	Rotor Pinion for 7RLM and 7RLN (22 teeth)	7AH-17
‡ 8	Throttle Valve	7RAK-302		Rotor Pinion Spacer for 7RLM and 7RLN	7AH-18
9	Throttle Valve Plunger	7RL-94	41	Gear Head	
‡ 10	Silencer Seal Ring	WV100A1-43		for 7RLM (16 teeth)	7AM-216
‡ • 11	Exhaust Deflector Seal	7A-379	• 42	for 7RLN (10 teeth)	7AN-216
12	Exhaust Silencer	7L-310		Gear Head Planet Gear Assembly (3) (for 7RLM and 7RLN) (15 teeth)	7AH-A10
13	Exhaust Deflector	7L-23	43	Gear Head Planet Gear Bearing (1 for each Gear)	7AH-500
‡ 14	Muffler Element	7L-311		44	Gear Head Spacer (for M and N ratios only)
15	Inlet Bushing Spacer	7AH-65	46	Gear Case Assembly	
16	Inlet Bushing	7L-565		for 7RLL	7LH-A37A
‡ 17	Air Strainer Screen	ROA2-61		for 7RLM and 7RLN	7LM-A37A
18	Reverse Valve	7RL-329	47	Gear Case	
19	Lock Pin Retainer	7RL-56		for 7RLL	7LH-B37A
20	Reverse Valve Lock Pin	7RL-347	48	for 7RLM and 7RLN	7LML-B37A
21	Retainer Setscrew	7RL-669	48	Grease Fitting	D0F9-879
22	Reverse Valve Spring	55RP-515	49	Grease Shield	5R-701
23	Rear End Plate	7RL-12	50	Spindle Bearing	R1L-24
‡ • 24	Rear End Plate Gasket	7RL-739	51	Spindle Bearing Retainer	7L-28
‡ 25	Rear End Plate Retainer	7AH-118	*	Housing Cap Wrench	141A12-26
26	Rotor (7 teeth)	7RLL-53	*	Grease Gun	R000A2-228
‡ 27	Vane Packet (set of 4 Vanes) (.062" [1.57mm] thick)	7RL-42-4	*	Vertical Hanger	7L-365
			*	Horizontal Hanger	6WS-366
28	Cylinder	7RL-3	*	Tune-up Kit (includes illustrated parts 2, 6, 7, 8, 10, 11, 14, 17, 24, 25, 27, 31 and 36)	
29	Front End Plate	7AH-11		for reversible models	7RL-S/D-A/ T-TK1
30	Cylinder Dowel	7AH-98		for nonreversible models	7L-S/D-A/ T-TK1
‡ • 31	Front Rotor Bearing	R1-22	*	Piped-Away Exhaust Kit	7L-K284
32	Rotor Bearing Spring Washer (2)	7AH-278	*	Gear Case/Housing Sleeve	7L-747

* Not Illustrated.

• To keep downtime to a minimum it is desirable to have on hand certain repair parts. We recommend that you stock one (pair or set) of each part indicated by a bullet (•) for every four tools in service.

‡ Indicates Tune-up Kit part.

Clutch Attachment, 7RL Series Angle Wrench - Exploded View



(Dwg. TPB802-2)

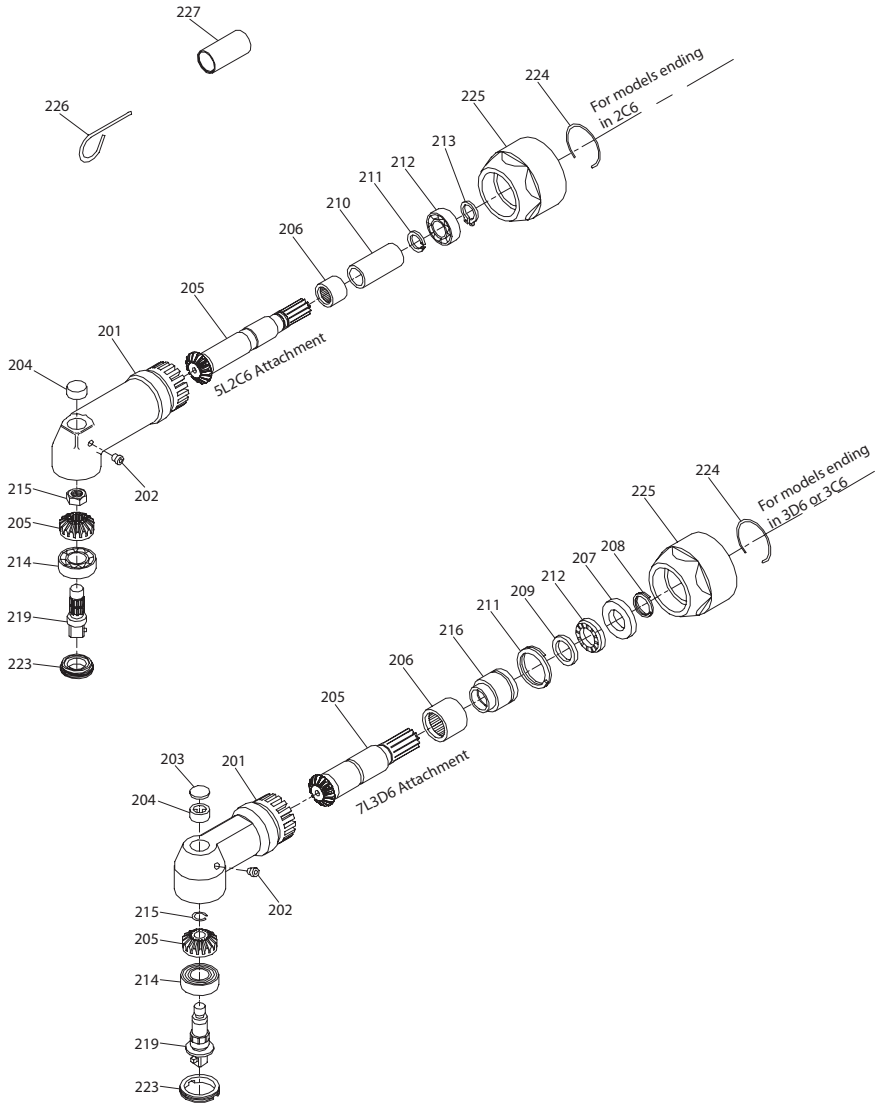
Clutch Attachment, 7RL Series Angle Wrench - Parts List

Item	Part Description	Part Number	Item	Part Description	Part Number
	Cushion Clutch Attachment (with Heavy Clutch Spring) (for models ending in 2C3)	5LN2C-AH580	75	Clutch Housing Assembly	7L3C-B580
			76	Grease Fitting	D0F9-879
51	Clutch Housing Assembly	5LK2C-B580	77	Retaining Ring	7L-28
52	Adjusting Hole Cover	5C1-415	78	Adjusting Hole Cover	7C-415A
53	Coupling Nut Retainer	5C1-29	79	Driver Bearing Washer	R43F-278
	Clutch Shaft Assembly	5LN2C-AH586	80	Clutch Driver Bearing	R1L-24
54	Clutch Shaft	5LK2C-586	81	Driver Jaw	7L3C-585
• 55	Front Clutch Jaw	5C1-589A		Clutch Driver Assembly	7C1-M581A
• 56	Clutch Ball (24)	RX1-629	• 82	Clutch Driver	7C-581A
• 57	Clutch Ball Spacer	5C1-401A	• 83	Front Clutch Jaw	7C-589A
• 58	Clutch Spring Seat (3)	5C1-627	• 84	Jaw Bearing Ball (12)	2U-696
• 59	Spring Seat Bearing	5C1-105	• 85	Clutch Ball Spacer	7C-401A
60	Clutch Adjusting Nut	5C1-582A	• 86	Clutch Release Ball (9)	4U-31
61	Adjusting Nut Lock	5C1-588	• 87	Clutch Ball Seat	7C-627
62	Clutch Engaging Spring	5LK2C-626	88	Clutch Spring (Medium) (Yellow)	7C-583A
63	Clutch Spring (Heavy) (Green)	5C1-H583	89	Spring Seat Stop	7C-704B
	Clutch Driver Assembly	5LK2C-A581	90	Clutch Spring Seat	7C-623
64	Clutch Shaft Support	5LK2C-584	91	Spring Seat Bearing	R02W-696
65	Clutch Driver	5LK2C-581	92	Adjusting Nut Lock	7C-588A
66	Clutch Driver Retainer	7AH-118	93	Clutch Adjusting Nut	7C-582A
67	Coupling Nut	7L-27	• 94	Disengaging Plunger Spring	4C-626
68	Clutch Sprag Key	5C1-416	• 95	Disengaging Plunger	7P1-584
*	Clutch Spring (Light) (Black)	5C1-L583	96	Clutch Adjusting Key	5C1-416
	Cushion Clutch Attachment (with Medium Clutch Spring) (for models ending in 3C6)	7L3C-A580	*	Clutch Spring (Light) (Black)	7C-L583A
			*	Clutch Spring (Heavy) (Green)	7C-H583A

* Not Illustrated.

- To keep downtime to a minimum it is desirable to have on hand certain repair parts. We recommend that you stock one (pair or set) of each part indicated by a bullet (•) for every four tools in service.

Angle Attachment, 7RL Series Angle Wrench - Exploded View



(Dwg. TPA953-4)

Angle Attachment, 7RL Series Angle Wrench - Parts List

Item	Part Description	Part Number	Part Number
	Angle Attachment	5L2C6	7L3D6
201	Angle Housing Assembly	5L2C-A550	7L3A-B550
202	Grease Fitting	D0F9-879	D0F9-879
203	Angle Housing Cap	---	8SA32-110
• 204	Upper Spindle Bearing	120A4-603	8SA32-603
• 205	Matched Bevel Gear Set	141A12-552	7L3A-A552
• 206	Bevel Pinion Bearing	H54U-511B	182A53-606
207	Rear Thrust Bearing Seat	---	7L2A-682
• 208	Bearing Seat Retainer	---	1415A12-6
209	Front Thrust Bearing Seat	---	141A12-683
210	Pinion Bearing Spacer	AG5141-165	---
• 211	Bearing Spacer Retainer	RXA21-343	182A53-685
212	Bevel Pinion Thrust Bearing	120A4-97	161A32-105
• 213	Bearing Retainer	120A4-588	---
• 214	Lower Spindle Bearing	120A4-593	8SA32-593
• 215	Bevel Gear Retainer	120A4-578	8SA32-578
216	Bevel Pinion Bearing Spacer	---	182A53-165
219	Socket Adapter Spindle Assembly (3/8" square drive)	141A12-A607	8SA32-P507-3/8
*	Socket Retainer Spring	401-718	401-718
*	Socket Retainer Pin	5020-716	5020-716
223	Spindle Bearing Cap	120A4-531	8SA32-531
224	Coupling Nut Retainer	141A12-29	5C1-29
225	Coupling Nut	141A12-27	7L-27
226	Bevel Pinion Sprag Key	5C1-416	---
227	Bearing Inserting Tool	---	7L3A-950

Item	Part Description	Part Number
	Spindle Assembly	
	1/4" hex recess (for standard bits) (for 5L2C6 Angle Attachment)	5L2C3-B586
	1/4" hex recess (for insert bits) (for 5L2C6 Angle Attachment)	5L2C4-B386
	1/4" square drive Spindle Assembly (for 5L2C6 Angle Attachment)	141A9-A607-1/4
	3/8" square drive (for 5L2C6 Angle Attachment)	141A12-A607
	3/8" square drive (flush spindle) (for 7L3D6 Angle Attachment)	8SA32-P507-3/8
	3/8" square drive (recessed spindle) (for 7L3D6 Angle Attachment)	8SA32-P607-3/8
*	Bit Retainer (for No. 5L2C4-B386 Spindle Assembly)	5L2C4-425
*	Socket Retaining Spring (for No. 141A12-A607, No. 8SA32-P507-3/8 or No. 8SA32-P607-3/8 Spindle Assembly)	401-718
*	Socket Retaining Pin (for No. 141A12-A607 or No. 8SA32-P507-3/8 Spindle Assembly)	5020-716

* Not Illustrated.

- To keep downtime to a minimum it is desirable to have on hand certain repair parts. We recommend that you stock one (pair or set) of each part indicated by a bullet (•) for every four tools in service.

Parts and Maintenance

When the life of the tool has expired, it is recommended that the tool be disassembled, degreased and parts be separated by material so that they can be recycled.

Tool repair and maintenance should only be carried out by an authorized Service Center.

Refer all communications to the nearest **Ingersoll Rand** Office or Distributor.

Related Documentation

For additional information refer to:

Product Safety Information Manual 04585006.

Product Information Manual 80167497 and 80227531.

Maintenance Information Manual 16584054.

Manuals can be downloaded from ingersollrandproducts.com.

16584047_ed4

ingersollrandproducts.com

© 2014 *Ingersoll Rand*

