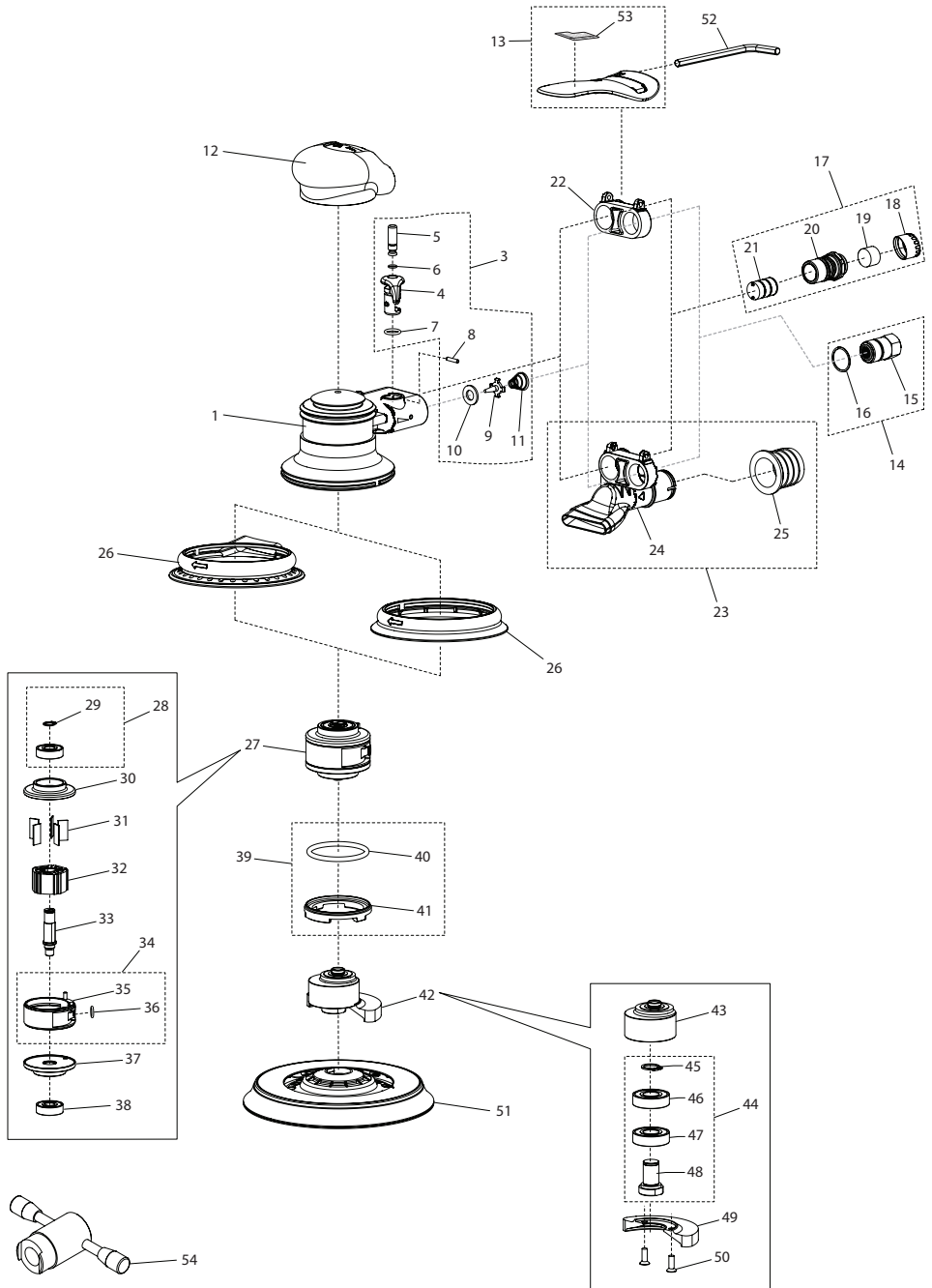


# 8000MAX Series Random Orbital Sander - Exploded View



(Dwg. 48622187)

## 8000MAX Series Random Orbital Sander - Parts List

Item	Part Description	Part Number	Item	Part Description	Part Number
1	Housing	8000MAX-360	27	Motor Assembly	8000MAX-A380
*2	Model Label		28	Upper Motor Ball Bearing	8000MAX-24
	for Model 8101MAX	8101MAX-301	29	Retainer	---
	for Model 8102MAX	8102MAX-301	30	Upper End Plate	---
	for Model 8103MAX	8103MAX-301	31	Vane Pack (set of 5)	8000MAX-42-5
	for Model 8201MAX	8201MAX-301	32	Rotor	8000MAX-53
	for Model 8202MAX	8202MAX-301	33	Shaft	---
	for Model 8203MAX	8203MAX-301	34	Cylinder Assembly	---
3	Throttle Regulator Assembly		35	Cylinder	---
	for Models 8101MAX, 8102MAX, 8201MAX, 8202MAX (3/32" and 3/16" Orbit)	8000MAX-A335	36	O-Ring	---
	for Models 8103MAX, 8203MAX (3/8" Orbit)	8000MAX-A340	37	Lower End Plate	---
4	Reverse Valve	---	38	Lower Motor Ball Bearing	8000MAX-25
5	Valve Stem / Plunger	---	39	Motor Cap Lock Ring Assembly	8000MAX-A390
6	O-Ring	---	40	Lock Ring	---
7	O-Ring	---	41	O-Ring	---
8	Dowel Pin	---	42	Counter Balance Assembly	---
9	Throttle Valve	---	43	Counter Balance	
10	Valve Seat	---		for Models 8101MAX, 8201MAX 3/32"	8000MAX-100-1
11	Valve Spring	---		for Models 8102MAX, 8202MAX 3/16"	8000MAX-100-2
12	Housing Grip	8000MAX-350		for Models 8103MAX, 8203MAX 3/8"	8000MAX-100-3
13	Lever with Warning Label	8000MAX-330	44	Counter Balance Components	8000MAX-A400
14	Inlet Assembly	8000MAX-A310	45	Retainer	---
15	Inlet Bushing	---	46	Upper Counter Balance Bearing	---
16	O-Ring	---	47	Lower Counter Balance Bearing	---
17	Exhaust Silencer Assembly	8000MAX-A300	48	Counter Balance Spindle	---
18	Silencer	---	49	Counter Balance Weight with 2 Screws	
19	Silencer Element	---		for Models 8101MAX, 8201MAX 3/32"	8000MAX-200-1
20	Bushing	---		for Models 8102MAX, 8202MAX 3/16"	8000MAX-200-2
21	Silencer Element (3)	---		for Models 8103MAX, 8203MAX 3/8"	8000MAX-200-3
22	Extension		50	Counter Balance Screw (2)	---
	for Models 8101MAX, 8102MAX, 8103MAX	8000MAX-321	51	Backing Pad	
	for Models 8201MAX, 8202MAX, 8203MAX	NA		6" PSA Backing Pad with M8 Mounting Screw	8000MAX-700
		6" Hook and Loop Backing Pad with M8 Mounting Screw		8000MAX-750	
		5" PSA Backing Pad with M8 Mounting Screw		8000MAX-800	
23	Vacuum Extension Assembly			5" Hook and Loop Backing Pad with M8 Mounting Screw	8000MAX-850
	for Models 8101MAX, 8102MAX, 8103MAX	NA	52	Backing Pad Screw Wrench - Short	8000MAX-500
	for Models 8201MAX, 8202MAX, 8203MAX	8000MAX-A320	53	Warning Label	8000MAX-99
24	Vacuum Extension	---	54	Motor flange Service Tool	8000MAX-600
25	Adaptor	---			
26	Shroud				
	for Models 8101MAX, 8102MAX, 8103MAX	8000MAX-371			
	for Models 8201MAX, 8202MAX, 8203MAX	8000MAX-370			

\* Not Illustrated.

### Parts and Maintenance

When the life of the tool has expired, it is recommended that the tool be disassembled, degreased and parts be separated by material so that they can be recycled.

Tool repair and maintenance should only be carried out by an authorized Service Center.

Refer all communications to the nearest **Ingersoll Rand** Office or Distributor.

### Related Documentation

For additional information refer to:

Product Safety Information Manual 04580387.

Product Information Manual 48622179.

Manuals can be downloaded from [ingersollrandproducts.com](http://ingersollrandproducts.com).

