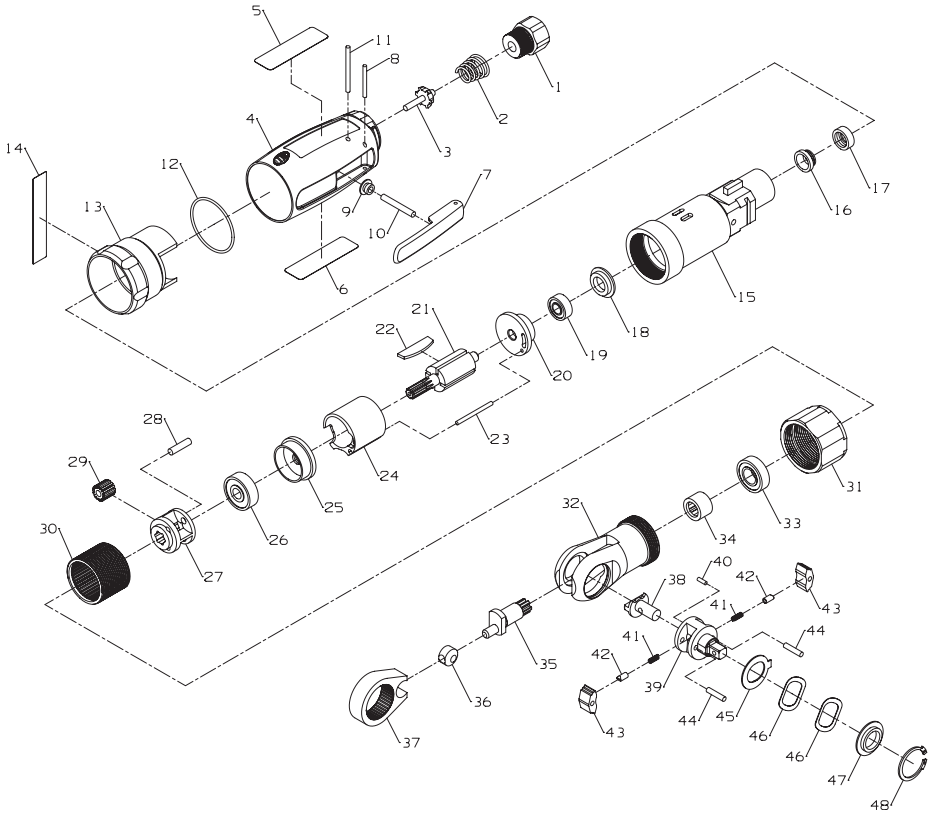


1103 and 1133 Air Ratchet Wrench Exploded Diagram



(Dwg. TP1959_3)

1103 and 1133 Air Ratchet Wrench Parts List

Item	Part Description	Part Number	Item	Part Description	Part Number
1	Inlet Bushing Assembly	1103-565	28	Planet Gear Shaft (3)	109-524
2	Throttle Valve Spring	1103-338	29	Planet Gear (3)	1103-9
3	Throttle Valve	344-302	30	Internal Gear	1103-406
	Composite Housing Assembly		31	Coupling Nut	1103-27
	for 1103	1103-A300		Ratchet Housing Assembly	1103-A322
	for 1133	1133-A300	32	Ratchet Housing	
4	Composite Housing		33	Crankshaft Ball Bearing	1103-510
5	Nameplate		34	Crankshaft Needle Bearing	1103-32
	for 1103	1103-301A	35	Crankshaft	1103-35
	for 1133	1133-301A	36	Drive Bushing	104-36
6	Information Label	1103-301	37	Yoke	1103-37
7	Trigger Lever	1103-93	38	Reverse Button	1103-38
8	Trigger Lever Pin	1103-553	39	Anvil Assembly	
9	Trigger Pin Seal	1103-308		for 1103	1103-44
10	Trigger Plunger	1103-302		for 1133	1133-44
11	Composite Housing Retaining Pin	1103-554	40	Reverse Button Stop Pin	104-39
12	O-ring	1103-367	41	Lock Spring and Damper (2)	1103-A41
	Regulator Assembly	1103-A249	42	Lock Pin (2)	1103-49
13	Regulator		43	Pawl (2)	1103-43
14	Warning Label	1107-99	44	Pawl Retaining Pin (2)	1103-178
	Housing Assembly	1103-A40	45	Spacer	1103-47
15	Housing		46	Friction Washer (2)	1103-45
16	Valve Seat Base	1103-710	47	Thrust Washer	1103-46
17	Valve Seat	1103-303	48	Retaining Ring	1033-426
18	End Cap	1103-624		Ratchet Head Kit (includes items 38 through 48)	
19	Rear Rotor Bearing	1103-24		for 1103	1103-TRK1
20	Rear End Plate	1103-12		for 1133	1133-TRK1
21	Rotor	1103-53		Oil - Ingersoll-Rand No. 10 (4 oz. bottle)	1024
22	Vanes (set of 4)	1103-42-4		Grease	
23	Cylinder Pin	1103-98		Ingersoll-Rand No. 28 (1 lb can)	28 1 LB
24	Cylinder	1103-3		Ingersoll-Rand No. 28 (8 lb can)	28 8 LB
25	Front End Plate	1103-11		Ingersoll-Rand No. 66 (1 lb can)	66 1 LB
26	Front Rotor Bearing	1103-97		Ingersoll-Rand No. 66 (8 lb can)	66 8 LB
27	Spindle	1103-8		Spline Wrench (for removal of item 30)	1103-SW

Parts and Maintenance

When the life of the tool has expired, it is recommended that the tool be disassembled, degreased and parts be separated by material so that they can be recycled.

Tool repair and maintenance should only be carried out by an authorized Service Center. Refer all communications to the nearest **Ingersoll-Rand** Office or Distributor.

Related Documentation

For additional information refer to:
Air Ratchet Wrench Product Safety Information Manual 04580361, Air Ratchet Wrench Product Information Manual 04585022.

Manuals can be downloaded from www.irtools.com.



www.irtools.com

© 2005 Ingersoll-Rand Company

Form 80156524

Edition 1

January 2005

To Buy Ingersoll Rand Products Online visit AirToolPro.com

Brought to you by Zampini Industrial Group - Factory Authorized Distribution Since 1987 - 1-800-353-4676