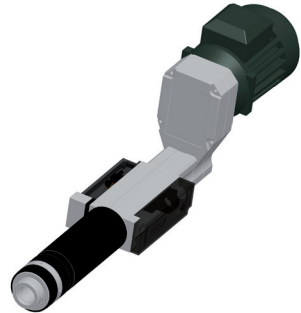




## Reverse mounting motor

Model	Part number
75 mm flange	445223
85 mm flange	445233



### Original instructions.

#### © COPYRIGHT 2013, DESOUTTER HP2 7SJ UK

All rights reserved. Any unauthorized use or copying of the contents or part thereof is prohibited. This applies in particular to trademarks, model denominations, part numbers and drawings. Use only authorized parts. Any damage or malfunction caused by the use of unauthorised parts is not covered by Warranty or Product Liability.

### Software and documentation available at:

<http://cadfiles.desouttertools.com>

*No login/password required.*

Reverse motor mount kits for the AFDE200, AFDE400/ 410 and AFDE600 /610/ 620 are available.

These kits allow the motor to be mounted facing rearward for applications where space is a problem or where it is preferential to orient the motor fan away from the output spindle.

The belt tensioner is positioned through a cover plate on the front housing.

With an A1 block the kits can be used with all speeds of tool.

However on tools without gearboxes (all tools apart from 330/550 rpm) the M port screw MUST be replaced with a set screw (M5/10-32) and the M port cannot be used in this configuration (unless the tool uses a gearbox).

With an A6 block the kits can be used with all speeds of tool with no exceptions.

### Kit Part Numbers

All AFDE200, AFDE400-1750 to 10000 and AFDE600-1750 to 5250 (75 mm flange).

- Part no.: 445223

AFDE400-330 to 1450, all AFDE410, AFDE600-330 to 1450, all AFDE610 and AFDE620 (85mm Flange).

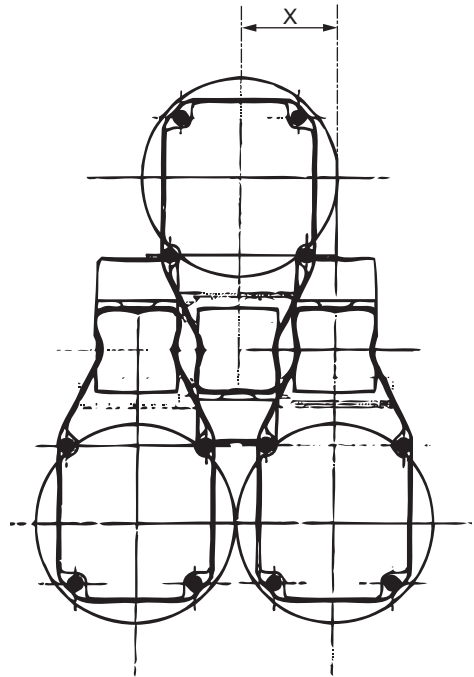
- Part no.: 445233

With the reverse mount the electric motor mounting can be rotated through 90° in any of four positions.

However the HCU (adjustable feed control unit) can not be used if the motor is mounted directly above the HCU cover.

The most useful position is above the A1/A6 or A7/A8 control top (pictured above) allowing close centre tool mounting.

The drawing below illustrates the close centres that can be achieved now with AFDE200, AFDE400/ 410, AFDE600/ 610/ 620, AFTE270/ 470/ 480 modular Auto Feed Tools.



Tool	X (mm)
AFDE200	60
AFDE230	60
AFDE400-1750 to AFDE400-10000	60
AFDE430-2100 to AFDE430-12000	60
AFDE400-900 to AFDE400-1450	70
AFDE410-1750 to AFDE410-8000	70
AFDE430-400 to AFDE430-1750	70
AFDE440-2100 to AFDE440-9600	70
AFDE610-1750 to AFDE610-5250	70
AFDE640-2100 to AFDE440-6300	70

AFDE410-330 to AFDE430-1450	80
AFDE440-400 to AFDE1750	80
AFDE610-330 to AFDE610-1450	80
AFDE620	80
AFDE640-400 to AFDE640-1740	80

**More Than Productivity**

**Zampini Industrial Group**

**AirToolPro.com**

**1-800-353-4676**

[www.desouttertools.com](http://www.desouttertools.com)

