



45532066
Edition 2
April 2015

Controller for Electric Screwdrivers

Models EC24N and EC24N-ESD

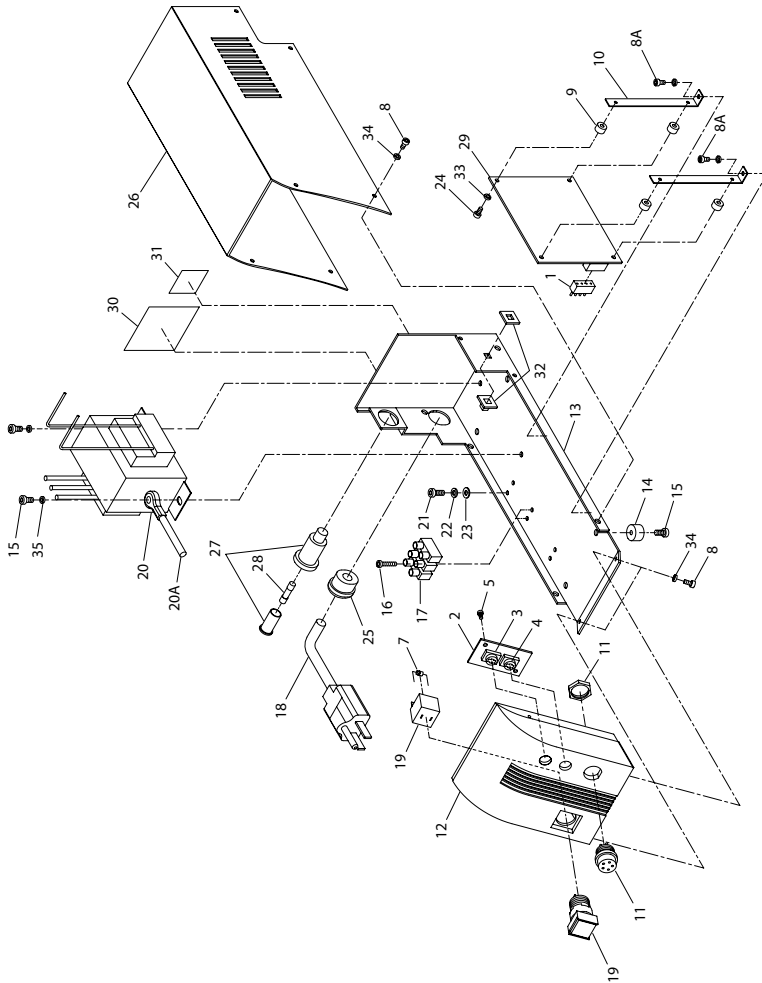
Parts Information



Save These Instructions

 **Ingersoll Rand®**

Models EC24N and EC24N-ESD Electric Screwdriver Controllers Exploded View



(Dwg. TPA1502-2)

Models EC24N and EC24N-ESD Electric Screwdriver Controllers Parts List

Item	Part Description	Part Number	Item	Part Description	Part Number
1	Plug (2)	-----	21	Ground Screw	EC24N-41
2	Potentiometer PCB	EC24N-200	22	Ground Screw Lock Washer (top; split type)	EC24N-42
3	Speed Potentiometer	EC24N-93	23	Ground Screw Lock washer (bottom; internal teeth)	EC24N-43
4	Soft Start Potentiometer	EC24N-424			
5	Self-tapping Screw (2)	-----	24	Self-tapping Screw (4)	-----
* 6	Spring Washer (4)	-----	25	Cord Strain Relief Grommet	EC24N-240
7	Zener Diode	EC24N-204	26	Cover	EC24N-40
8	Self-tapping Screw (12)	-----	27	Fuse Holder	EC24N-45
8A	Bracket Screw (2)	-----	-	Fuse Package	EC24N-P46
9	Control Base Spacer (4)	-----	28	Fuse	-----
10	Control Base Mounting Bracket (2)	EC24N-426	29	Control Base Assembly	EC24N-B525A
11	Receptacle		30	Nameplate	
	for EC24N	EC24N-203		for EC24N	EC24N-301
	for EC24N-ESD	EC24N-203-ESD		for EC24N-ESD	EC24N-301-ESD
12	Front Panel		31	Warning Label	EC24N-99
	for EC24N	EC24N-25	32	Signal Terminal	EC24N-P47
	for EC24N-ESD	EC24N-25-ESD	33	Spring Washer (4)	-----
13	Chassis	EC24N-3	34	Spring Lock washer (19)	-----
14	Rubber Foot (4)	-----	35	Lock washer (2)	-----
15	Self-tapping Screw (6)	-----	*	Chassis Hardware Package (includes illustrated items 5 [2], 6 [4], 8 [12], 8A [2], 9 [4], 14 [4], 15 [6], 16 [2], 24 [4], 33 [4], 34 [19] and 35 [2])	EC24N-P3
16	Self-tapping Screw (2)	-----			
17	Terminal Block (2)	EC24N-30			
18	Cord Assembly	EC24N-239			
19	Power Switch	EC24N-565	*	Controller Mounting Bracket	EC24-MB
20	Transformer	EC24N-53	*	Digital Counter	EC24-DC
20A	Ground Wire (for EC24N-ESD)	EC24N-22-ESD	*	Fuse Warning Label	EC24N-98

* Indicates Not Illustrated.

Parts and Maintenance

When tool life has expired, it is recommended that the tool be disassembled, degreased and parts separated by material for proper recycling.

Tool repair and maintenance should only be carried out by an authorized Service Center.

Refer all communications to the nearest **Ingersoll Rand** office or distributor.

Related Documentation

Manuals can be downloaded from ingersollrandproducts.com

For additional information, refer to:

Product Safety Information Manual 16573701.

Product Information Manual 45532041.

Maintenance Information Manual 45532058.

ingersollrandproducts.com

© 2015 *Ingersoll Rand*

