



Form 16574642
Edition 1
April 2005

Electric Screwdrivers

EL 24V Series

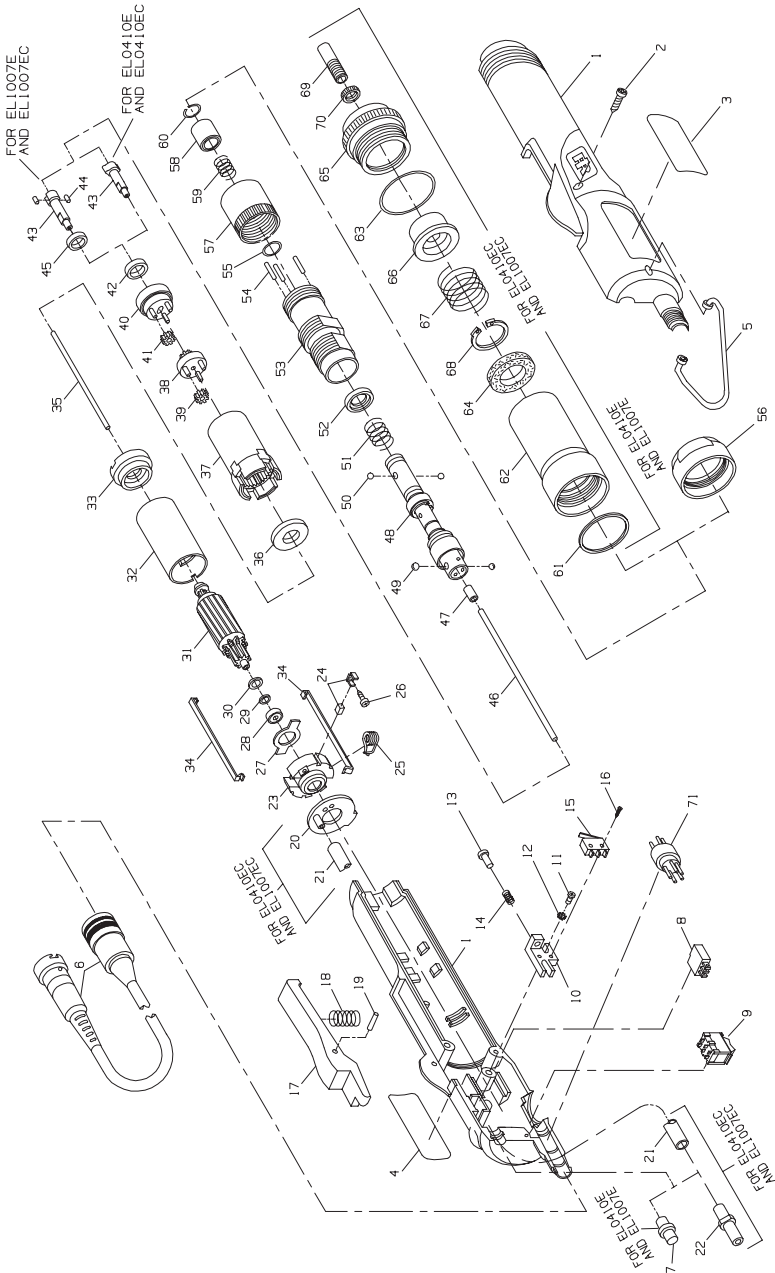
Parts Information



Save These Instructions



EL0410E, EL0410EC, EL1007E, EL1007EC Electric Screwdriver Exploded Diagram



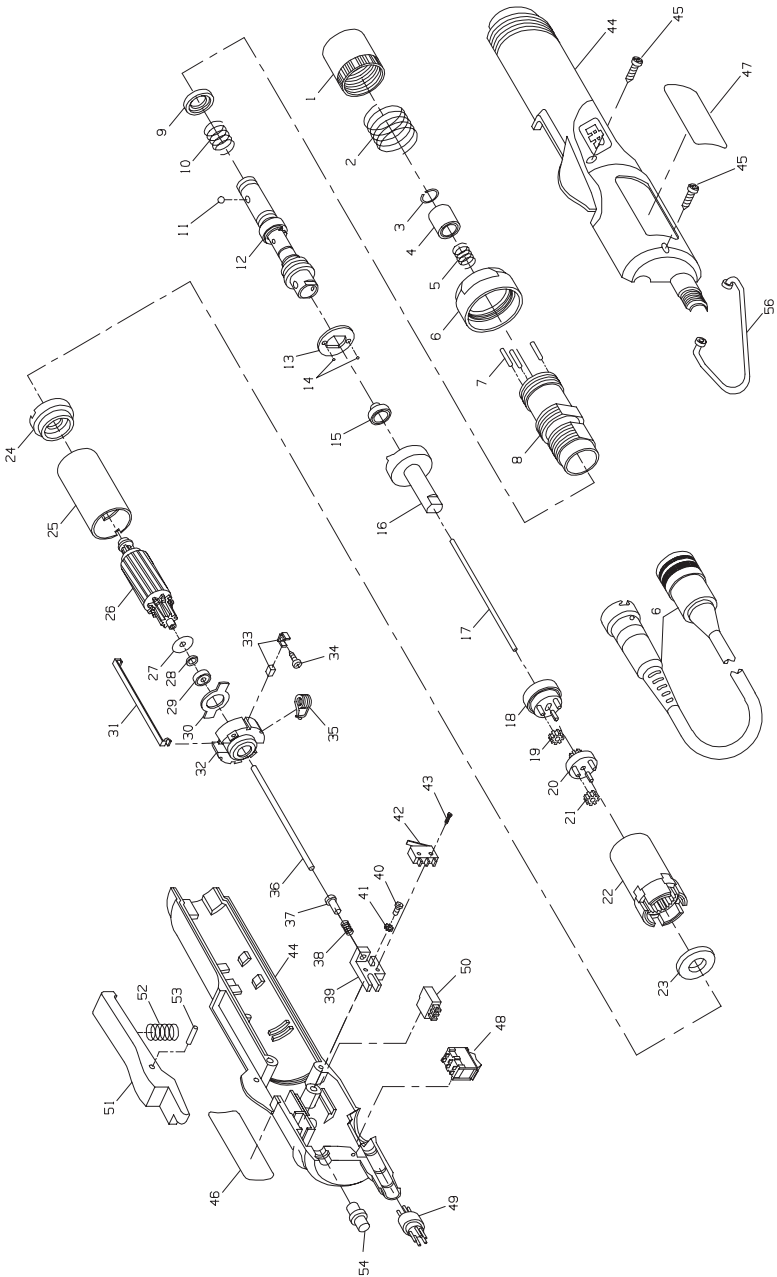
(Dwg.TPA1522)

EL0410E, EL0410EC, EL1007E, EL1007EC Electric Screwdriver Parts List

Item	Part Description	Part Number	Item	Part Description	Part Number
1	Housing Package			for EL0410E and EL0410EC	EL0410B-216
	for EL0410E	EL0410E-A40		for EL1007E and EL1007EC	EL1007B-216
	for EL1007E	EL1007E-A40	39	Gear Head Planet Gear (3)	
	for EL0410EC	EL0410EC-A40		for EL0410E and EL0410EC	EL0410B-10
	for EL1007EC	EL1007EC-A40		for EL1007E and EL1007EC	EL1007B-10
2	Housing Screw		40	Spindle Assembly	EL0410B-108
3	Nameplate		41	Spindle Planet Gear (3)	
	for EL0410E	EL0410E-301		for EL0410E and EL0410EC	EL0109B-9
	for EL1007E	EL1007E-301		for EL1007E and EL1007EC	EL1007B-9
	for EL0410EC	EL0410EC-301	42	Thrust Washer	EL0410B-109
	for EL1007EC	EL1007EC-301	43	Cam	
4	Warning Label	EL0109E-99		for EL0410E and EL0410EC	EL0410B-581
5	Suspension Bail	EL0109B-365		for EL1007E and EL1007EC	EL1007B-581
6	Power Cord Assembly	EL0109B-239	44	Cam Pin (2) (for EL1007E and EL1007EC)	EL1007B-587
7	Housing Bushing	EL0109B-465	45	Cam Collar (for EL1007E and EL1007EC)	EL1007B-588
8	Trigger Switch	EL0109B-222	46	Push Rod (1.650" long)	EL0109B-435
9	Reverse Switch	EL0109B-329	47	Cam Guide Sleeve	EL0410B-408
10	Switch Plate	EL0109B-221	48	Bit Holder Assembly	EL1007B-586
11	Switch Plate Screw (2)	EL0109B-226	49	Cam Guide Ball (2)	EL1007B-933
12	Switch Plate Screw Lock Washer (2)	EL0109B-227	50	Bit Retaining Ball (2) (.094" dia.)	R000B-263
13	Plunger	EL0109B-593	51	Clutch Spring	
14	Plunger Spring	EL0410B-595		for EL0410E and EL0410EC	EL0410B-583
15	Brake Switch	EL0109B-223		for EL1007E and EL1007EC	EL1007B-583
16	Microswitch Screw (2)	EL0109B-224	52	Clutch Spring Plate	EL0410B-623
17	Trigger	EL0109B-93	53	Clutch Housing	EL0410B-580
18	Trigger Spring	EL0109B-274	54	Clutch Adjusting Pin (3)	
19	Trigger Pin	EL0109B-275		for EL0410E and EL0410EC	EL0410B-416
20	Shield Plate (for EL0410EC and EL1007EC)	EL0410BC-42		for EL1007E and EL1007EC	EL1007B-416
21	Vacuum Tube (for EL0410EC and EL1007EC)	EL0410BC-43	55	Bit Retainer Retaining Ring	EP4007N-584
			56	Coupling	EL0109B-125
22	Vacuum Tube Nozzle (for EL0410EC and EL1007EC)	EL0410BC-44	57	Clutch Adjusting Ring	EL0410B-582
			58	Bit Retainer Sleeve	EL0410B-930
			59	Bit Retainer Sleeve Spring	EL0410B-931
	Motor Assembly		60	Bit Retainer Retaining Ring (front)	EP4007N-683
	for EL0410E and EL0410EC	EL0410B-A53	61	Packing Ring (for EL0410EC and EL1007EC)	EL0410BC-45
	for EL1007E and EL1007EC	EL1007B-A53	62	Nose Collar (for EL0410EC and EL1007EC)	EL0410BC-46
23	Rear End Plate	EL0109B-12	63	O-Ring (for EL0410EC and EL1007EC)	EL0410BC-47
24	Brush Assembly (2)		64	Filter (for EL0410EC and EL1007EC)	EL0410BC-48
25	Brush Spring	EL0109B-16	65	Front Cap (for EL0410EC and EL1007EC)	EL0410BC-49
26	Brush Screw (2)		66	Sleeve Holder (for EL0410EC and EL1007EC)	EL0410BC-50
27	Motor Plate	EL0109B-13			
28	Rear Armature Bearing	EL0109B-22	67	Holder Spring (for EL0410EC and EL1007EC)	EL0410BC-51
29	Shim (2) (.238" O.D X .020" thick)	EL0109B-56	68	Holder Retaining Ring (for EL0410EC and EL1007EC)	EL0410BC-52
30	Shim (.375" O.D X .015" thick)	EL0109B-55			
31	Armature		69	Vacuum Sleeve (for EL0410EC and EL1007EC)	EL0410BC-53
	for EL0410E and EL0410EC	EL0410B-53			
	for EL1007E and EL1007EC	EL1007B-53	70	Vacuum Sleeve Lockout (for EL0410EC and EL1007EC)	EL0410BC-54
32	Field	EL0109B-54			
33	Front End Plate	EL0109B-11	71	Insulator	EL0109B-330
34	Motor Assembly Spring (2)	EL0109B-98	*	Switch Adjusting Gauge	EL0410B-SG
35	Push Rod (1.403" long)	EL0109B-436	*	Gear Case Fixture	EL0410B-J37
36	Motor Clamp Spacer	EL0109B-207	*	Brush Package (10 pieces)	EL0109B-BP
37	Gear Case		*	Hardware Package (includes illustrated items 2 [3], 11 [2], 12 [2], 13, 16 [2], 18, 19, 25, 26 [2], 34 [2], and 60	EL0109B-HP
	for EL0410E and EL0410EC	EL0410B-37			
	for EL1007E and EL1007EC	EL1007B-37			
38	Gear Head Assembly				

* Not illustrated.

EL0109E Electric Screwdriver Exploded Diagram



(Dwg.TPA1523)

EL0109E Electric Screwdriver Parts List

Item	Part Description	Part Number	Item	Part Description	Part Number
1	Clutch Adjusting Ring	EL0109B-582	32	Rear End Plate	EL0109B-12
2	Bit Retainer Spring	EL0109B-931		Brush Package	EL0109B-BP
3	Bit Retainer Retaining Ring	EL0109B-683	33	Brush Assembly (2) (pkg. of 10)	
4	Bit Retainer Sleeve	EL0109B-930	34	Brush Screw (2)	
5	Bit Retainer Sleeve Spring	EL0109B-931	35	Brush Spring	EL0109B-16
6	Coupling	EL0109B-125	36	Push Rod (1.403" long)	EL0109B-436
7	Clutch Adjusting Pin (3)	EL0109B-275	37	Plunger	EL0109B-593
8	Clutch Housing	EL0109B-580	38	Plunger Spring	EL0109B-595
9	Clutch Spring Plate	EL0109B-623	39	Shutoff Switch Plate	EL0109B-221
10	Clutch Spring	EL0109B-583	40	Switch Plate Screw (2)	
11	Bit Retaining Ball (2mm dia.)	EL0109B-932	41	Switch Plate Screw Lock Washer (2)	
12	Bit Holder Assembly (1)	EL0109B-586	42	Brake Microswitch	EL0109B-223
13	Cam Guide	EL0109B-681	43	Microswitch Screw (2)	
14	Cam Guide Ball (2) (3 mm dia.)	EL0109B-933		Housing Package	EL0109B-A40
15	Cam Guide Sleeve Assembly	EL0109B-408	44	Housing	
16	Cam	EL0109B-581	45	Housing Screw (3)	
17	Push Rod (1.650" long)	EL0109B-435	46	Warning Label	EL0109E-99
18	Spindle Assembly	EL0109B-108	47	Nameplate	EL0109E-301
19	Spindle Planet Gear (3)	EL0109B-9	48	Reverse Switch	EL0109B-329
20	Gear Head Assembly	EL0109B-216	49	Insulator	EL0109B-330
21	Gear Head Planet Gear (3)	EL0109B-10	50	Trigger Switch	EL0109B-222
22	Gear Case	EL0109B-37	51	Trigger	EL0109B-93
23	Motor Clamp Spacer	EL0109B-207	52	Trigger Spring	EL0109B-274
	Motor Assembly	EL0109B-A53	53	Trigger Pin	EL0109B-275
24	Front End Plate	EL0109B-11	54	Housing Bushing	EL0109B-465
25	Field	EL0109B-54	55	Power Cord Assembly	EL0109B-239
26	Armature	EL0109B-53	56	Suspension Ball	EL0109B-365
27	Shim (.375" O.D. X .015 thick)	EL0109B-55	*	Switch Adjusting Gauge	EL0410B-SG
28	Shim (.238" O.D. X .020 thick)	EL0109B-56	*	Gear Case Fixture	EL0410B-J37
29	Rear Armature Bearing	EL0109B-22	*	Hardware Package	
30	Plate	EL0109B-13		(includes parts 3, 31 [2], 34 [2], 35, 37, 40 [2], 41 [2], 43 [2], 45 [3], 52 and 53)	
31	Motor Assembly Spring (2)	EL0109B-98			EL0109B-HP

* Not illustrated.

Parts and Maintenance

When the life of the tool has expired, it is recommended that the tool be disassembled, degreased and parts be separated by material so that they can be recycled.

Tool repair and maintenance should only be carried out by an authorized Service Center. Refer all communications to the nearest **Ingersoll-Rand** Office or Distributor.

Related Documentation

For additional information refer to:
 Electrical Screwdrivers Product Safety Information Manual 16573685,
 Electrical Screwdrivers Product Information Manual 16578668,
 Electrical Screwdrivers Maintenance Information Manual 16575318

Manuals can be downloaded from www.irttools.com.

Notes

Notes



www.irttools.com

© 2005 Ingersoll-Rand Company

To Buy Ingersoll Rand Products Online visit AirToolPro.com
Brought to you by Zampani Industrial Group - Factory Authorized Distribution Since 1987 - 1-800-353-4676