



04581237
Edition 9
March 2015

Air Grinder, Die Grinder and Sander

G2 Series (Angle)

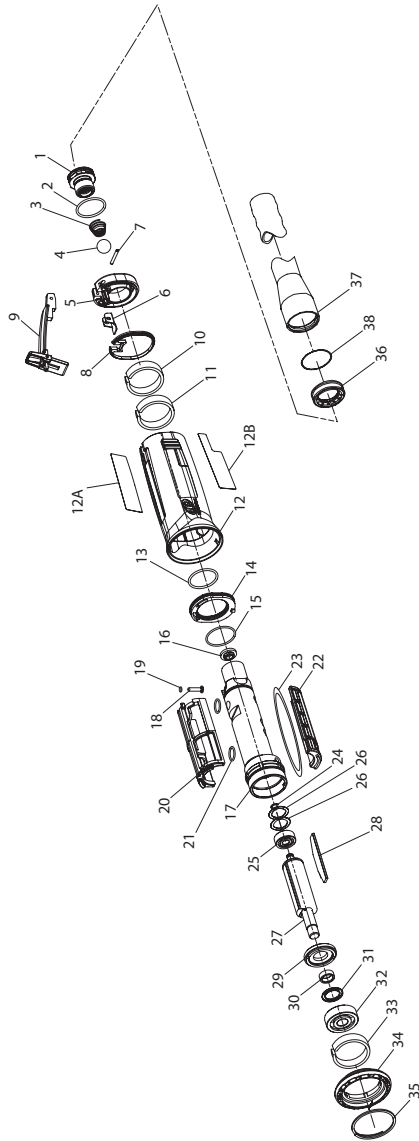
Parts Information



Save These Instructions

 **Ingersoll Rand®**

G2 Series (Angle) Air Grinder, Air Die Grinder and Air Sander - Exploded Diagram (Body)



(Dwg. 16574360)

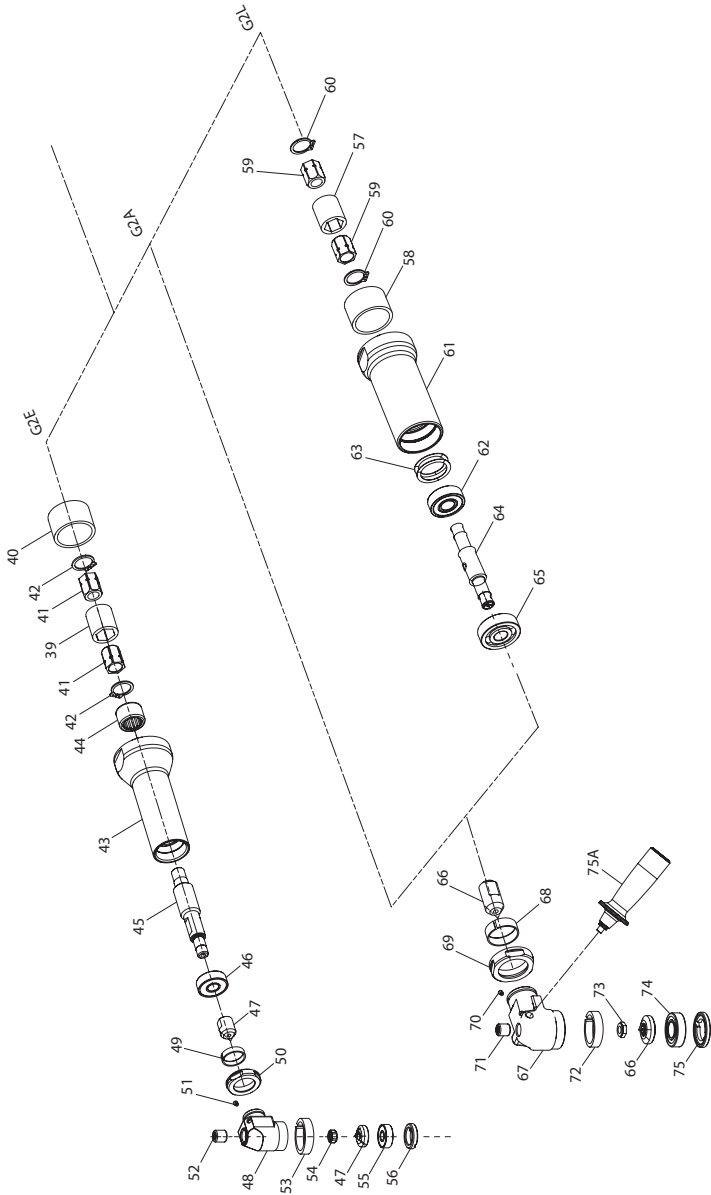
G2 Series (Angle) Air Grinder, Air Die Grinder and Air Sander - Parts List (Body)

Item	Part Description	Part Number	Item	Part Description	Part Number
Common parts for all G2A, G2E, and G2L Grinders					
1	Inlet Assembly	AG2-A465	20	Flow Guide Assemblies	
*	Inlet Screen	R1602-61	21	Flow Guide O-Ring (2) (with each Flow Guide Assembly)	16570798
2	Inlet Seal	85H-167			
*	Ball Valve Spring Seat	AG2-592	*	Flow Guide Assembly for 100, 150, & 180	AG2-A200-1
3	Ball Valve Spring	38966	*	Flow Guide Assembly for 090, 135, & 145	AG2-A200-2
4	Ball	D10-280	*	Flow Guide Assembly for 120	AG2-A200-3
5	Rear Exhaust Diffuser	AG2-123	*	Flow Guide Assembly, for 075	AG2-A200-4
6	Lever Support	LG2-89	22	Intake Cover Assembly	AG2-A144
7	Throttle Lever Pin	61H-120	23	Intake Cover O-Ring	16570780
8	Rear Exhaust Diffuser Gasket	AG2-223	24	Rear Rotor Bearing Retainer	LG1-118
9	Lever Assembly	AG2-A400	25	Rear Rotor Bearing	R120-127
*	Lever	--	26	Rear Rotor Bearing Spacer (2)	400-25-191
*	Lock Spring	--	27	Rotor	AG2-53-4A
*	Lock Pin	--	28	Vane Pack	AG2-42-4
*	Lever Lock	--	29	Front End Plate	LG2-11
10	Rear Exhaust Diffuser Muffler	AG2-311B	30	Front End Plate Spacer	LG2-65
11	Rear Housing Muffler	AG2-311A	31	Seal Assembly	61H-A32
12	Motor Housing Assembly	AG2-A40	32	Front Rotor Bearing	LG2-24
12A	Warning Label	AG2-99	33	Front Muffler	AG2-311F1
12B	Model Label	AG2-301	34	Front Housing Cap	AG2-202
13	Rear Cylinder O-Ring	16570756	35	Flange Clamp	LG2-29
14	Exhaust Seal	AG2-318	*	Exhaust Hose Adapter Kit	LG2-K284
15	Front Cylinder O-Ring	16570772	36	Adapter	LG2-184
16	Cylinder Assembly	AG2-A3	37	Hose	3RL-284
*	Throttle Bushing	AG2-781	38	Retainer	6WT-203
17	Ball Valve Seat	AG2-303S	†	Tune Up Kit, Includes Part Number (2, 3, 4, 8, 10, 11, 13, 14, 15, 18, 21, 24, 25, 26, 28, 31, 32, 33, & 35)	AG2-TK1
18	Throttle Pin Assembly	AG2-A161			
19	Throttle Pin O-Ring	16570806	†	Muffler Kit, Includes Part Number (10, 11, & 33)	AG2-MK311
			†	Rotor Kit, Includes Part Number (25, 26, 27, 28, 29, 30, 31 & 32)	AG2-A53-4A

* Not Illustrated.

† To keep downtime to a minimum, it is desirable to stock one of each of these service kits for every four tools in service.

G2 Series (Angle) Air Grinder, Air Die Grinder and Air Sander - Exploded Diagram (Middle)

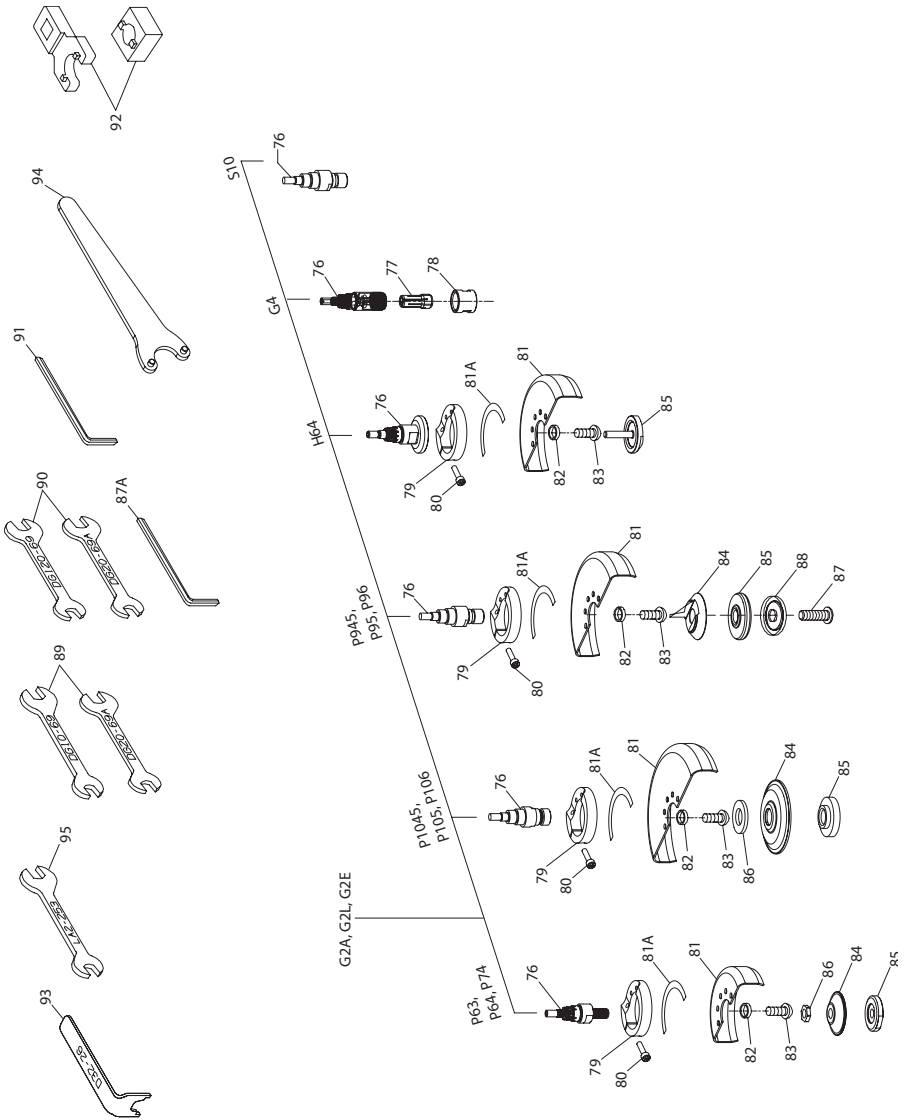


(Dwg. 16574378)

G2 Series (Angle) Air Grinder, Air Die Grinder and Air Sander - Parts List (Middle)

Item	Part Description	Part Number	Item	Part Description	Part Number
	Additional parts for all G2E models		61	Extension Housing	LA3-20
39	Arbor Coupling	LE2-304	62	Rear Spindle Bearing	WFS182-22
40	Clamp Sleeve	LE2-176	63	Rear Spindle Bearing Washer (2)	7AH-278
41	Spindle Bearing Nut (2)	LE2-85	64	Spindle	LA3-4
42	Coupling Retaining Ring (2)	RX3-729	65	Front Spindle Bearing	LG2-24
43	Extension Housing Assembly	LA2-A20		Additional parts for all G2A & G2L models	
44	Rear Spindle Bearing	LE2-24	66	Bevel Pinion and Bevel Gear (sold only as a matched set)	
45	Spindle	LA2-4		for 075, 090, & 100	LA2-A552-2.4
46	Front Spindle Bearing	LG1-24		for 180	LA2-A552-1.3
47	Bevel Pinion and Bevel Gear (sold only as a matched set)	LA1-A552-1.5A		for 120, 135, & 150	LA2-A552-1.7
48	Angle Housing Assembly	LA1-A550S	67	Angle Housing Assembly	AG2-A550S
49	Clamp Spacer	LA1-46	68	Clamp Spacer	LA2-46
50	Clamp Nut	LG1-27	69	Clamp Nut	LG2-27
51	Grease Fitting	D0F9-879	70	Grease Fitting	D0F9-879
52	Upper Arbor Bearing	AG210-693	71	Upper Arbor Bearing	AG210-693
53	Wick	LA1-561	72	Wick	
54	Bevel Gear Nut	AG210-578A		for 120, 135, 150	LA2-560
55	Lower Arbor Bearing	AG210-24		for 180	LA2-561
56	Arbor Bearing Cap	AG210-531		for 075, 090, 100	LA2-562
	Additional parts for all G2L models		73	Bevel Gear Nut	LA2-578
57	Arbor Coupling	LE2-304	74	Lower Arbor Bearing	LA2-593
58	Clamp Sleeve	LE2-176	75	Arbor Bearing Cap	AG20-531
59	Spindle Bearing Nut (2)	LE2-85	75A	Handle	HG2-48
60	Coupling Retaining Ring (2)	RX3-729			

G2 Series (Angle) Air Grinder, Air Die Grinder and Air Sander - Exploded Diagram (End)



(Dwg. 16574386)

G2 Series (Angle) Air Grinder, Air Die Grinder and Air Sander - Parts List (End)

Item	Part Description	Part Number	Item	Part Description	Part Number
	Additional parts for all G2E models		83	Guard Mounting Screw (3)	
76	Arbor			for G2E models	LA1-667
	for G2E models ending in G4	AG210-4-G4		for G2A & G2L models	AG31-667-4
	for G2A & G2L models ending in G4	AG220-4-G4	84	Wheel Flange	
	for G2E models ending in H64	LA1-104-1		for models ending in P63 & P64 (excluding G2E145FP64)	R0A2D61-337
	for G2A & G2L models ending in H64	LA2-104-1		for models ending in P74	AG31-337-4
	for G2E models ending in P64	LA1-6		for models ending in P945, P95, & P96	LG3-337-45M
	for G2E145FP64 only	LA1-6-NN		for models ending in P1045, P105, & P106	AG230-337-5
	for G2A & G2L models ending in P63, P64, or P74	AG220-4	85	Flange Nut	
	for models ending in P1045, P105, or P106	AG230-4-1045		for models ending in H64	LA2-388
	for models ending in P9, P945, P95, or P96	AG230-4-945		for models ending in P63 & P64 (excluding G2E145FP64)	AG21-337A-3
	for models ending in S10	LAS2-204-P10		for models ending in P74	AG31-338-4
	for G2L075FS10 only	VG-1041		for models ending in P945, P95, & P96	AG230-338-45M
	Additional parts for all models ending in G4			for models ending in P1045, P105 & P106	AG230-338-5
77	Collet		86	Flange Spacer	
	for G2E models ending in -G4M	DG110-700-6mm		for models ending in P64 & P74 (excluding G2E145FP64)	LA2-111
	for G2E models ending in -G4	DG110-700-G4		for models ending in P1045, P105	R3F-286
	for G2A & G2L models ending in -G4M	G160HD-700-6mm		for models ending in P106	AG2-286
	for G2A & G2L models ending in -G4	G160HD-700-1/4	87	Wheel Retaining Screw	
78	Collet Nut			for models ending in P945, P95, & P96	LG2-219M
	for G2E models	AG210-699A	87A	Hex Key (4mm)	AG2-562
	for G2A & G2L models	DG120-699A	88	Wheel Retaining Screw Washer	
	Additional parts for all wheel models			for models ending in P945, P95, & P96	LG2-218
79	Guard Adapter Assembly			Accessories for all models	
	for G2E models	LA1-A710	89	Collet Body/ Arbor Wrench	
	for G2A & G2L models	AG2-A710		for G2A & G2L models ending with G4, S10, P63, P64, & P74	DG10-69
80	Guard Adapter Screw			for G2E models ending with G4/G4M	DG20-69A
	for G2E models	804-634	90	Collet Nut Wrench	
	for G2A & G2L models	95233151		for G2A models ending with G4	DG120-69
	Wheel Guard Assembly			for G2E models ending with G4/G4M	DG20-69A
	for models ending in 63 (3")	AG20-A106-3	91	Arbor Wrench	
	for models ending in 64 and 74 (4")	AG121-A106-4		for G2E models ending with P64 & for G2A & G2L models ending with P1045, P105, & P106	AG220-340
	for models ending in 945 and 1045 (4.5")	LA3-A106-45		for G2A & G2L models ending with P945, P95, & P96	AG230-340M
	for models ending in 95 and 105 (5")	LA3-A106-5-EU	92	Arbor Bearing Cap Wrench	
81	Wheel Guard			for G2E models ending with G4 & P64	AG210-29
	for models ending in 63 (3")	AG20-106-3		for G2E models ending with H64	LA1-29
	for models ending in 64 and 74 (4")	AG121-106-4		Flange Nut Wrench	
	for models ending in 945 and 1045 (4.5")	LA3-106-45	93	for all models ending with P64, P74, P1045, P105, & P106	D32-26
	for models ending in 95 and 105 (5")	LA3-106-5-EU	94	for G2A & G2L models ending with P945, P95, & P96	AG3-26M
81A	Guard Warning Label	AG2-99G	95	Clamp Nut Wrench - for all models	LA2-253
	Wheel Guard Replacement Kit				
	for models ending in 96 and 106 (6"), Includes Part Number (79, 80, 81A, 83 and 6" wheel guard)	AG2-A106-6			
82	Guard Lock Washer (3)	R2-320-10			

Parts and Maintenance

When tool life has expired, it is recommended that the tool be disassembled, degreased and parts separated by material for proper recycling.

Tool repair and maintenance should only be carried out by an authorized Service Center.

Refer all communications to the nearest **Ingersoll Rand** office or distributor.

Related Documentation

For additional information refer to:

Air Grinder Product Safety Information Manual 04584959.

Air Die Grinder Product Safety Information Manual 04580288.

Air Sander Product Safety Information Manual 04580387.

Air Grinder Product Information Manual 04581211 and 04581799.

Air Die Grinder Product Information Manual 04581203.

Air Sander Product Information Manual 04581195.

Manuals can be downloaded from ingersollrandproducts.com

Notes:

Notes:

Notes:

ingersollrandproducts.com

© 2015 *Ingersoll Rand*

