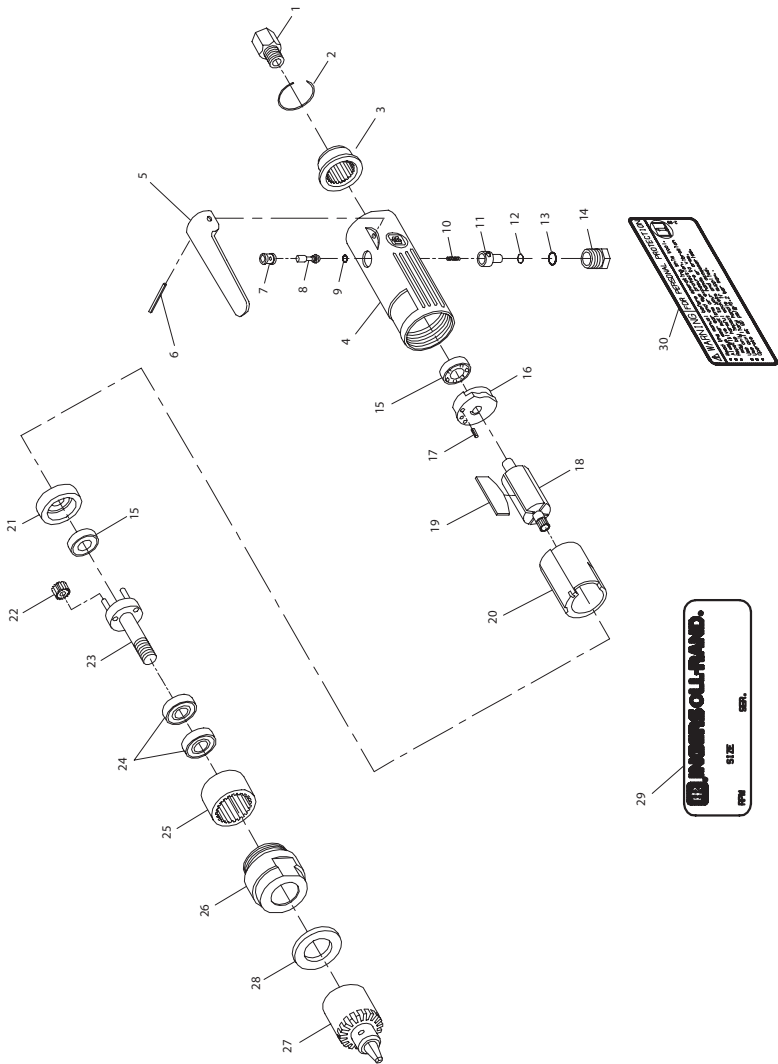


LA410 Air Drill Exploded Diagram



(Dwg. 16571093)



LA410 Air Drill Parts List

Item	Part Number	Item	Part Number	Item	Part Number
1	LA410-565	11	LA410-5	21	LA410-11
2	LA410-1	12	LA410-6	22	LA410-10(3)
3	LA410-23	13	LA410-7	23	LA410-216
4	LA410-40	14	LA410-8	24	LA410-31(2)
5	LA410-273	15	LA410-9(2)	25	LA410-33
6	LA410-74	16	LA410-12	26	LA410-37
7	LA410-516	17	LA410-13	27	LA410-60
8	LA410-302	18	LA410-53	28	LA410-38
9	LA410-4	19	LA410-42(4)	29	LA410-301
10	LA410-51	20	LA410-3	30	EU-99

* Not illustrated.

Parts and Maintenance

When the life of the tool has expired, it is recommended that the tool be disassembled, degreased and parts be separated by material so that they can be recycled.

Tool repair and maintenance should only be carried out by an authorized Service Center.

Refer all communications to the nearest **Ingersoll Rand** Office or Distributor.

Related Documentation

For additional information refer to:

Air Drill Product Safety Information Manual 04580353.

Air Drill Product Information Manual 16571846.

Manuals can be downloaded from ingersollrandproducts.com