



45532058

Edition 1

May 2007

Controller for Electric Screwdrivers

Model EC24N and EC24N-ESD

Maintenance Information



Save These Instructions

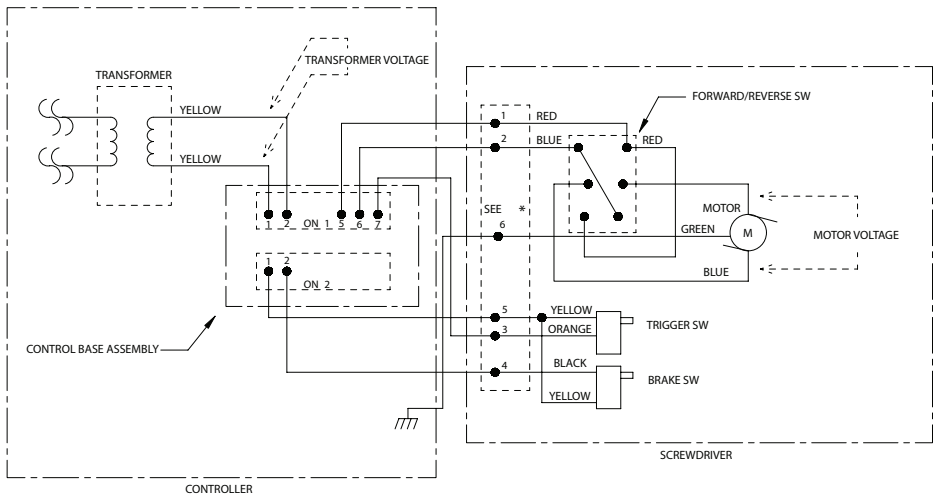
 **Ingersoll Rand**

⚠ WARNING

Maintenance procedures have the potential for severe shock hazard and should be performed by qualified personnel.

Troubleshooting Guide

Trouble	Probable Cause	Solution
No Power	Fuse	Disconnect Power Cord. Replace fuse.
	Power Switch	Disconnect Power Cord. Use ohmmeter to check yellow and black leads at Switch. Reading should be 0 to full scale when switched from on to off.
	Power Cord	Use Voltmeter to check white lead at terminal block and black lead at Switch. Reading should be 115 VAC for Model EC24N and 230VAC for Model EC24E.
	Transformer	Use voltmeter to check the two yellow leads from the Transformer. Reading should be 24 VAC.
	Circuit Board	Replace the Circuit board.
Faulty braking	Circuit Board	Replace the Circuit Board.
Speed Control does not work	Speed Potentiometer	Disconnect Power Cord. Unplug the Socket Assembly from Circuit Board. Using an ohmmeter, check the yellow and orange leads at the potentiometer by rotating the knob. Reading should be 0 to 50,000 ohms.
	Circuit Board	Replace the Circuit Board.



* WIRE 6 FOR - ESD SCREWDRIVERS AND CONTROLLERS

(Dwg. TPD1817-3)

Related Documents

For additional Information Refer to:
 Product Safety Information Manual 16573701.
 Product Information Manual 45532041.
 Parts Information Manual 45532066.

Manuals can be downloaded from www.irtools.com

Notes:

www.irttools.com

© 2007 *Ingersoll Rand* Company

