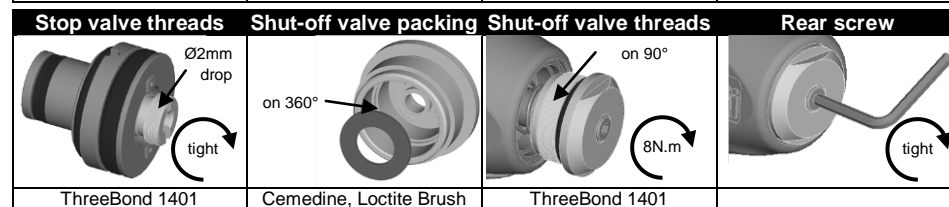
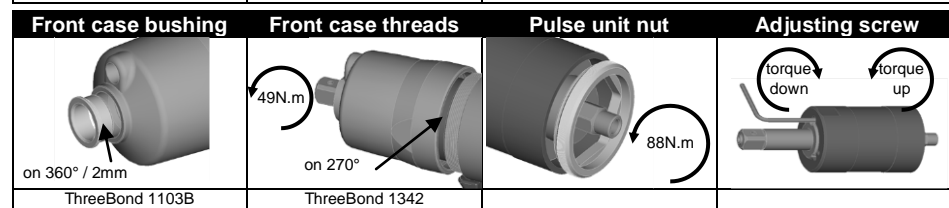
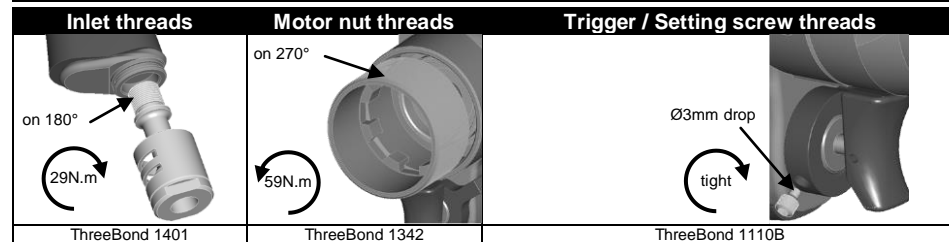
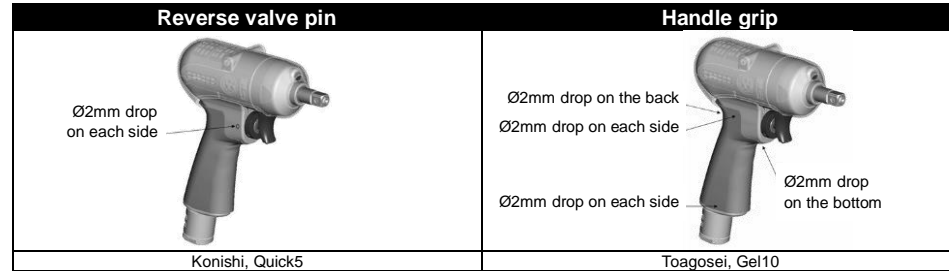


# PTF060-T6100-S10S

## Mounting



## Lubrication



PTF060-T6100-S10S 6151720880

# PTF060-T6100-S10S



## Specifications

Bolt size	Square drive size		Mass (without socket)		Overall length (without socket)		Air inlet thread	Air hose size	
	mm	in	kg	lb	mm	in	in	mm	in
M8-M10	9.5	3/8	1.1	2.4	189.5	7 1/2	PT 1/4	9.5	3/8

Recommended torque range						Rotational frequency	Air consumption (at load)	
N.m		kgf.m		ft.lb		rpm	l/min	cfm
30	50	3.0	5.1	22.1	36.8	6100	600	21.1

	Safety manual	2050502163
	Instructions manual	6159949610

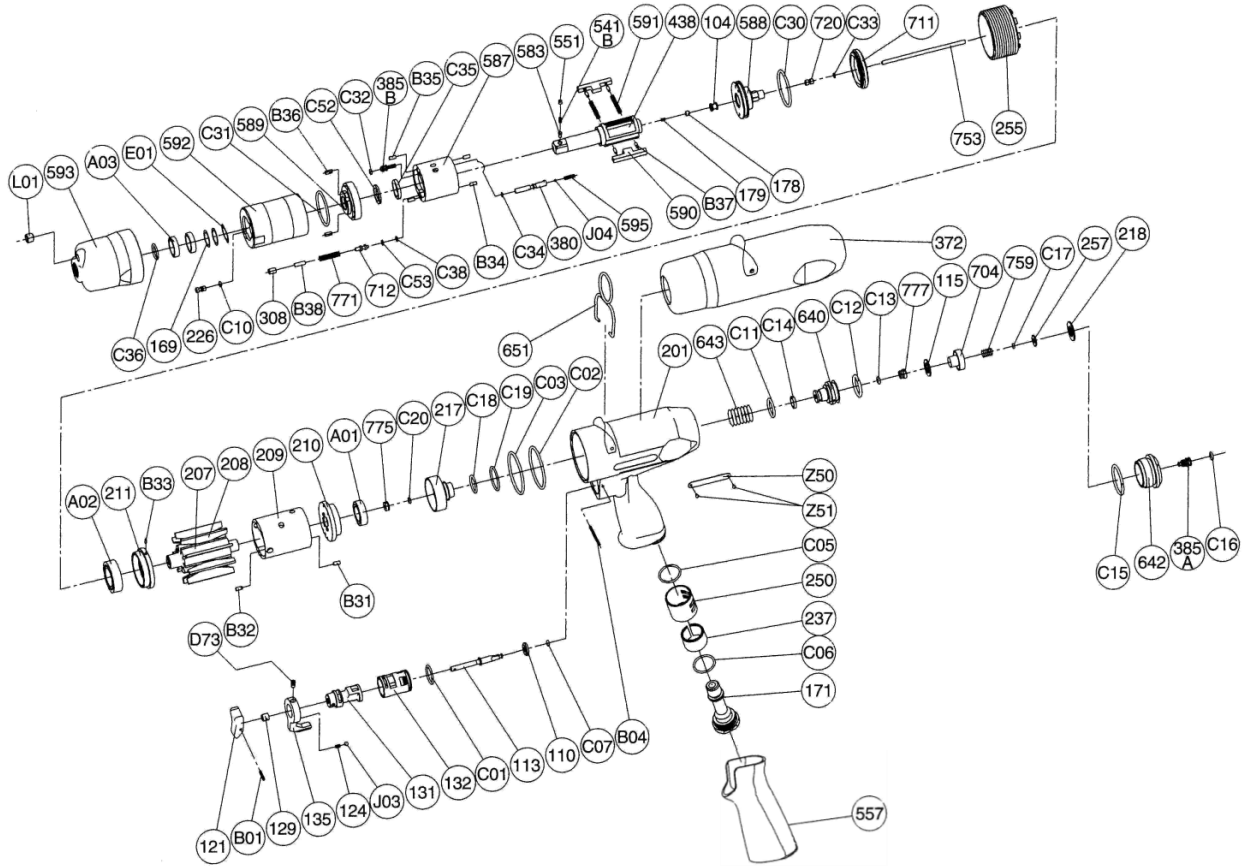
## Maintenance operations

Every 3 months / 100,000 cycles\*  
 Every 6 months / 200,000 cycles\*  
 Every 12 months / 400,000cycles\*  
 \*whichever comes first

Refill and adjust oil in pulse unit  
 Replace parts of service kits  
 Check wearing parts and replace if necessary

# PTF060-T6100-S10S

## Exploded view



## Parts list

Ref No.	Ordering No.	Qty	Description	Ref No.	Ordering No.	Qty	Description	Ref No.	Ordering No.	Qty	Description
1			FRONT CASE KIT	711		1	CYLINDER COVER	C01		1	O RING
L01		1	PLUG	2.2	5412060489		SOCKET RETAINER KIT	113		1	THROTTLE VALVE ROD
593	5412058509	1	FRONT CASE	551		1	PLUG	110		1	THROTTLE VALVE
A03		2	BALL BEARING	541B		1	BUTTON RETAINER SPRING (F)	C07		1	O RING
C36		1	O RING	583		1	RETAINER BUTTON (F)	B04		1	GROOVED PIN
S.1	5412060487		FRONT CASE SERVICE KIT	S.2	5412060497		PULSE UNIT SERVICE KIT	4.3	5412060540		INLET KIT
INCL. L01, A03, C36				INCL. E01, 169, C10, C32, C52, C35, C31, 308, C53, C38, B35, B34, C34, J04, 591, 179, 178, C30, C33				171	5412058445	1	INLET JOINT
2			PULSE UNIT KIT	3			MOTOR KIT	C06		1	O RING
2.1			OIL CYLINDER KIT	207	5412058490	1	ROTOR	237		1	MUFFLER PAD
E01		2	WAVE WASHER	208	5412058491	9	ROTOR BLADE	250	5412057876	1	EXHAUST COVER
169		2	REVERSE VALVE WASHER	209	5412058492	1	CYLINDER	C05		1	O RING
226	5412058454	1	OIL PLUG	B31		1	SPRING PIN	S.4	5412060545		HOUSING SERVICE KIT
C10		1	O RING (HNBR80)	B32		1	SPRING PIN	INCL. 124, J03, C01, 110, C07, C06, 237, C05			
592	5412058508	1	CYLINDER CASE	217		1	BEARING COVER	5			SHUT OFF VALVE KIT (INCL. S.5)
C32		1	O RING (HNBR80)	C19		1	O RING	643		1	STOP VALVE SPRING
385B		1	ADJUSTING SCREW	C18		1	O RING	640		1	STOP VALVE
C52		1	BACK UP RING	C18		1	O RING	777		1	COLLAR
C35		1	X RING (HNBR80)	775		1	SEAL BOX	115		1	THROTTLE VALVE SHEET
C31		1	O RING (HNBR80)	C20		1	O RING S-3	704		1	VALVE
589	5412058505	1	OIL CYLINDER LOWER PLATE	C02		1	O RING	759		1	RETURN SPRING
B36		2	GROOVED PIN	C03		1	O RING	257		1	WASHER
308		1	SPACER	3.1	5412060503		LOWER PLATE KIT	218		1	PACKING
B38		1	NEEDLE ROLLER	A02		1	BALL BEARING	642		1	STOP VALVE REAR COVER
771	5412058517	1	SPRING	211		1	CYLINDER LOWER PLATE	385A		1	ADJUSTING SCREW
712		1	DAMPER	B33		1	SPRING PIN	S.5			SHUT OFF VALVE SERVICE KIT
C53		1	BACK UP RING	3.2	5412060508		UPPER PLATE KIT	C11		1	O RING
C38		1	O RING (HNBR80)	210		1	CYLINDER UPPER PLATE	C14		1	U-SHAPE PACKING
B35		2	NEEDLE ROLLER	A01		1	BALL BEARING	C12		1	O RING
587	5412058503	1	OIL CYLINDER	S.3	5412060518		MOTOR SERVICE KIT	C13		1	O RING
B34		2	NEEDLE ROLLER	INCL. C19, C18, C20, C02, C03, A02, A01				C17		1	O RING
C34		1	O RING	4			HOUSING KIT	C16		1	O RING
380		1	ADJUSTING SPINDLE	4.1	5412060532		HANDLE KIT	C15		1	O RING
J04		1	BALL	201		1	HOUSING	6	5412103853		SHUT-OFF VALVE KIT TO D-SERIES
595	5412058510	1	TORQUE ADJUSTING SPRING	557		1	PROTECTOR	Replace 643, C11, C14, 640, C12, C13, 777, 115, 704, 759, C17, 257, 218, 642, 385A, C16, C15, 753, 775, C20, 217, C18, C19			
438	5412058502	2	SPINDLE	Z50		1	NAME PLATE				OTHER PARTS
591		2	BLADE SPRING	Z51		2	SCREW RIVET	372	5412060452	1	PLASTIC COVER
590	5412058506	2	SPINDLE BLADE	4.2	5412060537		THROTTLE KIT	651	5412058474	1	HANGER (HORIZONTAL)
B37		4	SPRING PIN	121		1	THROTTLE VALVE LEVER	255	5412058496	1	MOTOR FASTENING NUT
179		1	PLUNGER SPRING	B01		1	SPRING PIN	753		1	PISTON ROD
178		1	PLUNGER	129		1	THROTTLE VALVE ROD BUSHING		5412060286	1	WARNING LABEL
104		1	BUSHING	135	5412057223	1	REVERSE VALVE LEVER				STANDARD ACCESSORIES
588	5412058504	1	OIL CYLINDER UPPER PLATE	D73		1	SET SCREW		5412054452	1	AIR NIPPLE
C30		1	O RING (HNBR80)	124		1	KNOCK SPRING			1	HEX PIN WRENCH
720		1	PISTON	J03		1	BALL			1	HEX PIN WRENCH
C33		1	O RING	131		1	REVERSE VALVE				
				132		1	REVERSE VALVE BUSHING				

or kits without ordering number are not sold separately

**Zampini Industrial Group**

**AirToolPro.com**

**1-800-353-4676**

