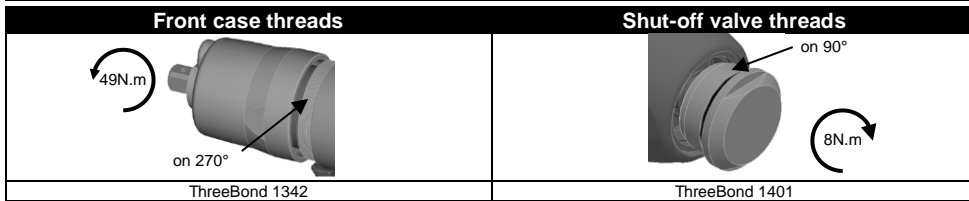
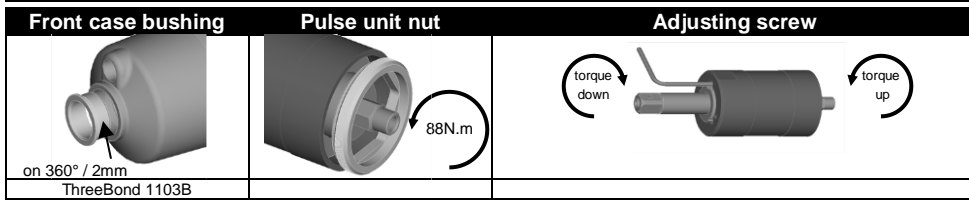
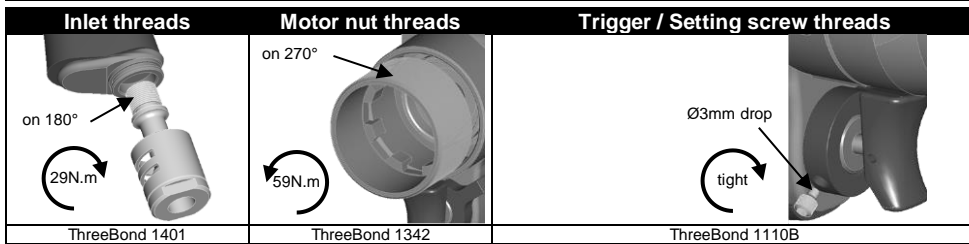
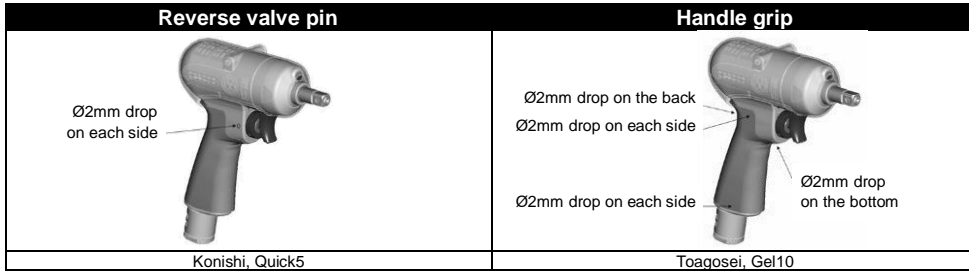


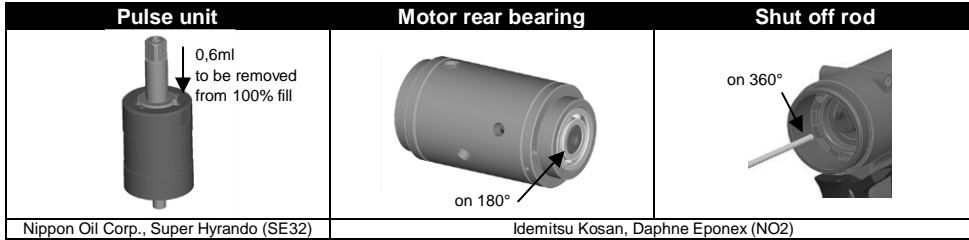
Part no 6159949640
 Issue no 07
 Series no D
 Page 4/4

PTF060-T6100-S10S

Mounting



Lubrication



Desoutter Industrial
 Desoutter Ltd - Zodiac Unit 4 - Boundary way
 Hemel Hempstead - Herts - UK HP2 7SJ

Part no 6159949640
 Issue no 07
 Series no D
 Page 1 / 4

PTF060-T6100-S10S 6151720880

PTF060-T6100-S10S



Specifications

Bolt size	Square drive size		Mass (without socket)		Overall length (without socket)		Air inlet thread	Air hose size	
	mm	in	kg	lb	mm	in	in	mm	in
M8-M10	9.5	3/8	1.1	2.4	189.5	7 1/2	PT 1/4	9.5	3/8

Recommended torque range						Rotational frequency	Air consumption (at load)	
N.m		kgf.m		ft.lb			rpm	l/min
30	50	3.0	5.1	22.1	36.8	6100	600	21.1

	Safety manual	2050502163
	Instructions manual	6159949610

Maintenance operations

Every 3 months / 100,000 cycles*
 Every 6 months / 200,000 cycles*
 Every 12 months / 400,000cycles*
 *whichever comes first

Refill and adjust oil in pulse unit
 Replace parts of service kits
 Check wearing parts and replace if necessary

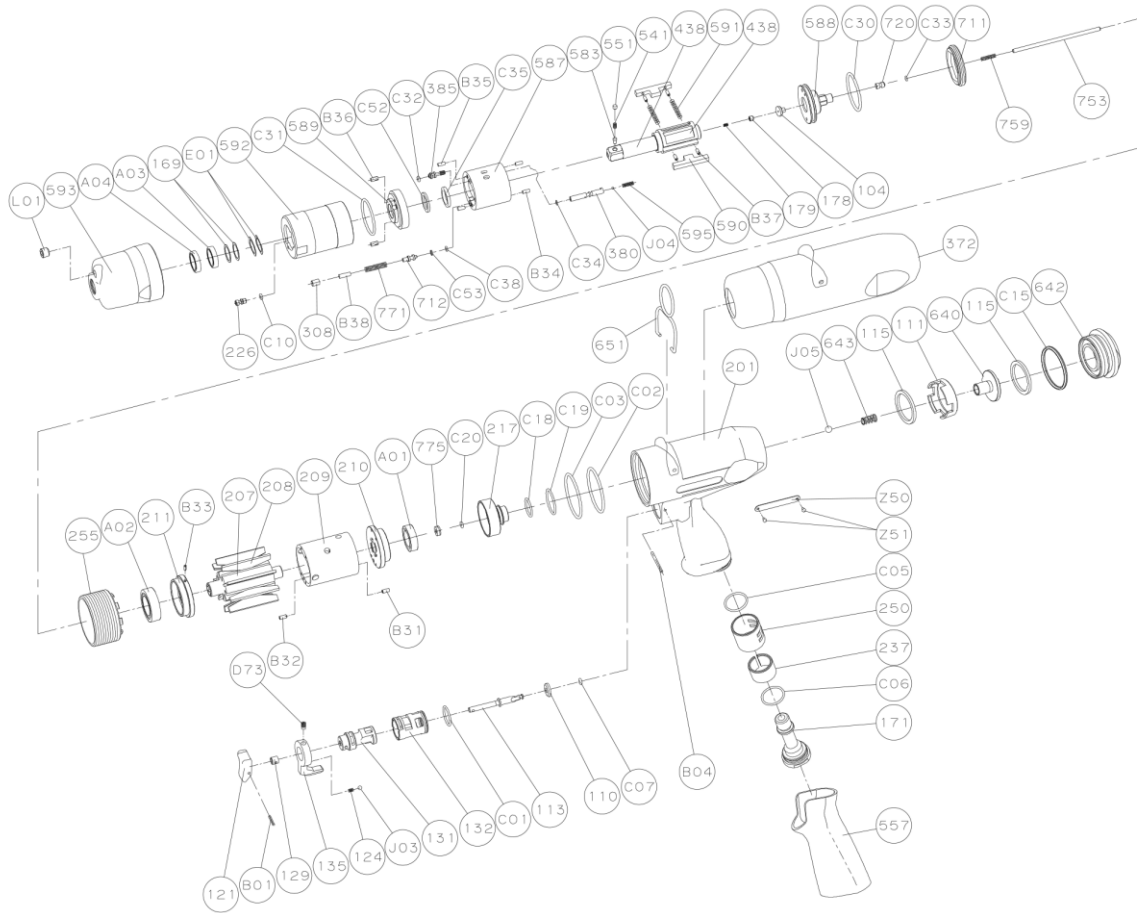
Zampini Industrial Group

AirToolPro.com

1-800-353-4676

ZAMPINI
INDUSTRIAL GROUP

Exploded view



Parts list

Ref No.	Ordering No.	Qty	Description	Ref No.	Ordering No.	Qty	Description	Ref No.	Ordering No.	Qty	Description
			FRONT CASE KIT								
L01		1	PLUG	C30		1	O RING (HNBR80)	135	5412057223	1	REVERSE VALVE LEVER
593	5412058509	1	FRONT CASE	720		1	PISTON	D73		1	SET SCREW
A03		1	BALL BEARING (metal shielded)	C33		1	O RING	124		1	KNOCK SPRING
A04		1	BALL BEARING (rubber shielded)	711		1	CYLINDER COVER	J03		1	BALL
S.1	5412060487		FRONT CASE SERVICE KIT	2.2	5412060489		SOCKET RETAINER KIT	131		1	REVERSE VALVE
INCL. L01, A03, A04				551		1	PLUG	132		1	REVERSE VALVE BUSHING
			PULSE UNIT KIT	541B		1	BUTTON RETAINER SPRING (F)	C01		1	O RING
				583		1	RETAINER BUTTON (F)	113		1	THROTTLE VALVE ROD
				S.2	5412060497		PULSE UNIT SERVICE KIT	110		1	THROTTLE VALVE
				INCL. E01, 169, C10, C32, C52, C35, C31, 308, C53, C38, B35, B34, C34, J04, 591, 179, 178, C30, C33				C07		1	O RING
								B04		1	GROOVED PIN
								INLET KIT			
								4.3	5412060540		
								171	5412058445	1	INLET JOINT
								C06		1	O RING
								237		1	MUFFLER PAD
								250	5412057876	1	EXHAUST COVER
								C05		1	O RING
								HOUSING SERVICE KIT			
								INCL. 124, J03, C01, 110, C07, C06, 237, C05			
								SHUT OFF VALVE KIT (INCL. S.5)			
								111		1	THROTTLE VALVE WASHER
								640		1	STOP VALVE
								642		1	STOP VALVE REAR COVER
								SHUT OFF VALVE SERVICE KIT			
								S.5	5412103851		
								J05		1	BALL
								643	5412103740	1	STOP VALVE SPRING
								115		2	THROTTLE VALVE SHEET
								C15		1	O RING
								PUSH ROD KIT			
								6	5412103852		
								753		1	PISTON ROD
								759		1	RETURN SPRING
								OTHER PARTS			
								372	5412060452	1	PLASTIC COVER
								651	5412058474	1	HANGER (HORIZONTAL)
								255	5412058496	1	MOTOR FASTENING NUT
									5412060286	1	WARNING LABEL
								STANDARD ACCESSORIES			
									5412054452	1	AIR NIPPLE
										1	HEX PIN WRENCH
										1	HEX PIN WRENCH
								SHUT-OFF VALVE KIT TO D-SERIES			
								INCL. 111, 640, 642, J05, 643, 115, C15, 753, 759, 217, C18, C19, 775, C20			

* or kits without ordering number are not sold separately