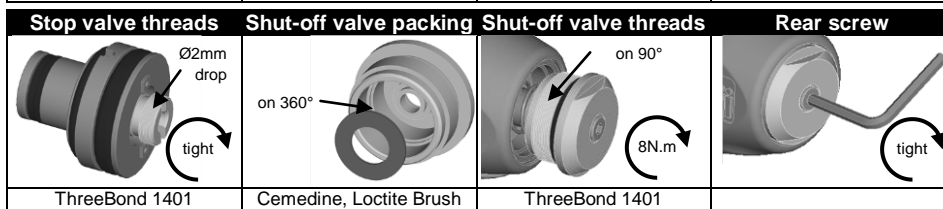
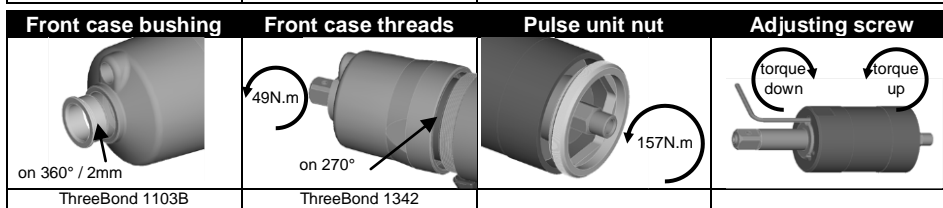
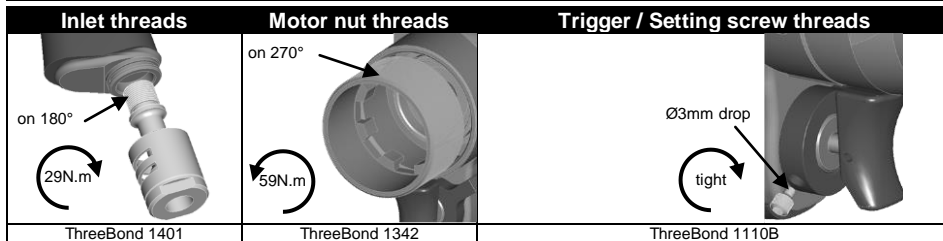
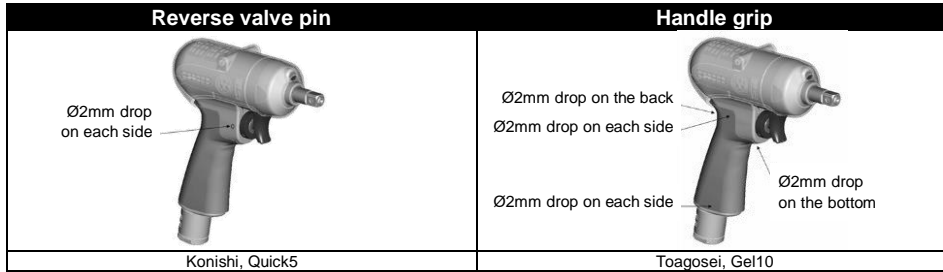
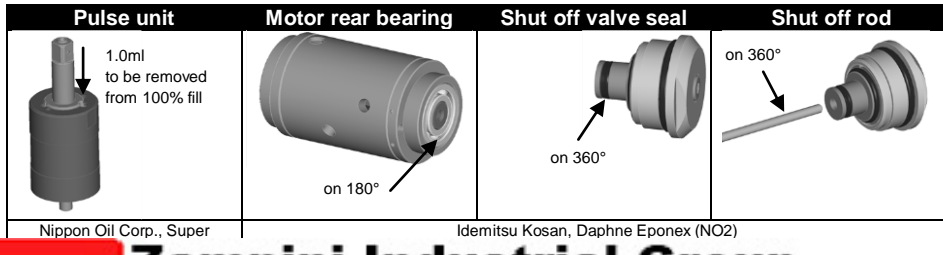


# PTF085-T4800-S13S

## Mounting



## Lubrication



PTF085-T4800-S13S 6151720890

# PTF085-T4800-S13S



## Specifications

Bolt size	Square drive size		Mass (without socket)		Overall length (without socket)		Air inlet thread	Air hose size	
	mm	in	kg	lb	mm	in	in	mm	in
M10	12.7	1/2	1.6	3.5	209.0	8 1/4	PT 1/4	9.5	3/8

Recommended torque range						Rotational frequency	Air consumption (at load)	
N.m		kgf.m		ft.lb			rpm	l/min
45	85	4.6	8.6	33.1	62.6	4800	680	24.0

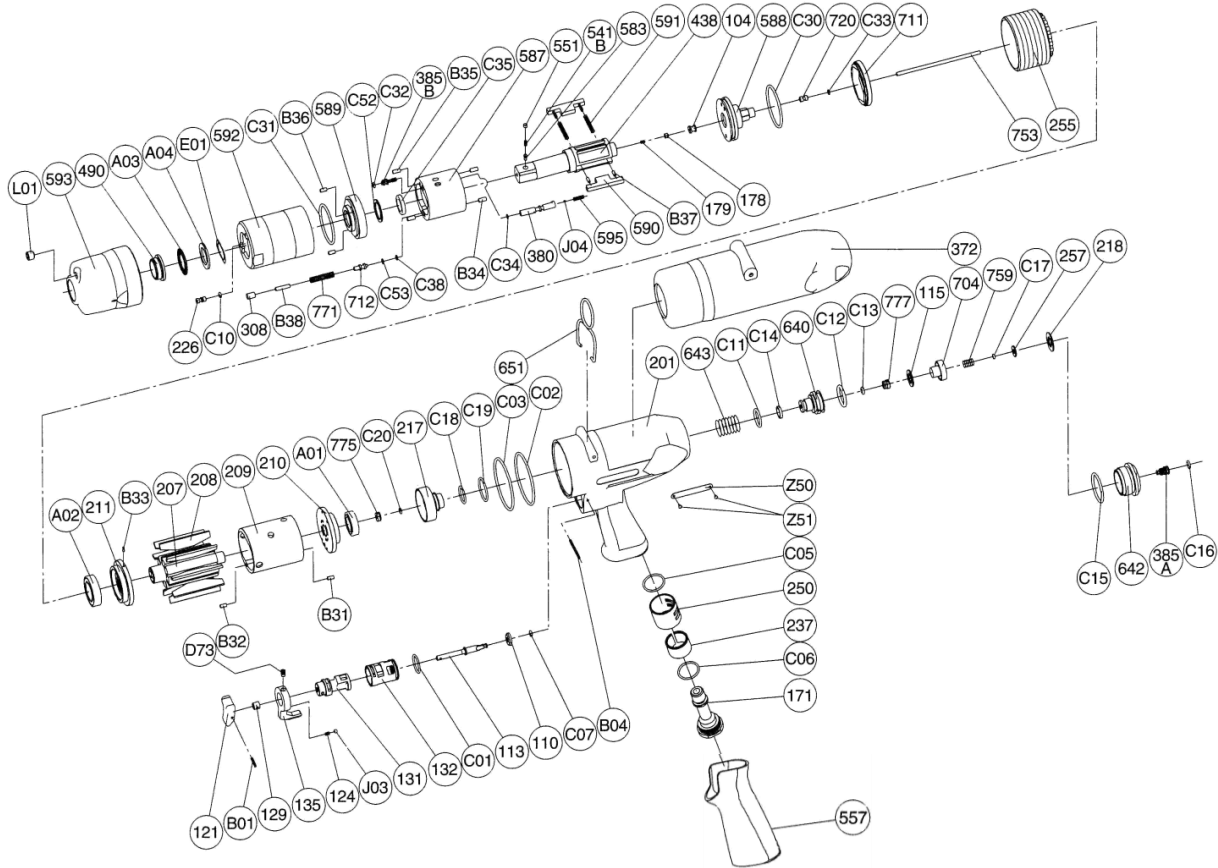
	Safety manual	2050502163
	Instructions manual	6159949610

## Maintenance operations

Every 3 months / 100,000 cycles\*  
 Every 6 months / 200,000 cycles\*  
 Every 12 months / 400,000cycles\*  
 \*whichever comes first

Refill and adjust oil in pulse unit  
 Replace parts of service kits  
 Check wearing parts and replace if necessary

Exploded view



Parts list

Ref No.	Ordering No.	Qty	Description
1			FRONT CASE KIT
L01		1	PLUG
593	5412058539	1	FRONT CASE
490		1	SPINDLE BUSHING
A03		1	NEEDLE BEARING
A04		1	THRUST BEARING
S.1	5412060488		FRONT CASE SERVICE KIT
INCL. L01, 490, A03, A04			
2			PULSE UNIT KIT
2.1			OIL CYLINDER KIT
E01		2	WAVE WASHER
226	5412058454	1	OIL PLUG
C10		1	O RING (HNBR80)
592	5412058538	1	CYLINDER CASE
C32		1	O RING (HNBR80)
385B		1	ADJUSTING SCREW
C52		1	BACK UP RING
C35		1	X RING (HNBR80)
C31		1	O RING
589	5412058535	1	OIL CYLINDER LOWER PLATE
B36		2	GROOVED PIN
308		1	SPACER
B38		1	NEEDLE ROLLER
771	5412058544	1	SPRING
712		1	DAMPER
C53		1	BACK UP RING
C38		1	O RING (HNBR80)
B35		2	NEEDLE ROLLER
587	5412058533	1	OIL CYLINDER
B34		2	NEEDLE ROLLER
C34		1	O RING (HNBR80)
380		1	ADJUSTING SPINDLE
J04		1	BALL
595	5412058540	1	TORQUE ADJUSTING SPRING
438	5412060434	1	SPINDLE
591		2	BLADE SPRING
590	5412058536	2	SPINDLE BLADE
B37		4	SPRING PIN
179		1	PLUNGER SPRING
178		1	PLUNGER
104		1	BUSHING
588	5412058534	1	OIL CYLINDER UPPER PLATE
C30		1	O RING (HNBR80)
720		1	PISTON
C33		1	O RING
711		1	CYLINDER COVER
2.2	5412060490		SOCKET RETAINER KIT
551		1	PLUG
541B		1	BUTTON RETAINER SPRING (F)
583		1	RETAINER BUTTON (F)
S.2	5412060498		PULSE UNIT SERVICE KIT
INCL. E01, C10, C32, C52, C35, C31, 308, C53, C38, B35, B34, C34, J04, 591, 179, 178, C30, C33			
3			MOTOR KIT
207	5412058521	1	ROTOR
208	5412058522	9	ROTOR BLADE
209	5412058523	1	CYLINDER
B31		1	SPRING PIN
B32		1	SPRING PIN
217		1	BEARING COVER
C19		1	O RING
C18		1	O RING
775		1	SEAL BOX
C20		1	O RING S-3
C02		1	O RING
C03		1	O RING
3.1	5412060504		LOWER PLATE KIT
A02		1	BALL BEARING
211		1	CYLINDER LOWER PLATE
B33		1	SPRING PIN
3.2	5412060509		UPPER PLATE KIT
210		1	CYLINDER UPPER PLATE
A01		1	BALL BEARING
S.3	5412060519		MOTOR SERVICE KIT
INCL. C19, C18, C20, C02, C03, A02, A01			
4			HOUSING KIT
4.1	5412060533		HANDLE KIT
201		1	HOUSING
557		1	PROTECTOR
Z50		1	AIR FILTER
Z51		2	SCREW RIVET
4.2	5412060537		THROTTLE KIT
121		1	THROTTLE VALVE LEVER
B01		1	SPRING PIN
129		1	THROTTLE VALVE ROD BUSHING
135	5412057223	1	REVERSE VALVE LEVER
D73		1	SET SCREW
124		1	KNOCK SPRING
J03		1	BALL
131		1	REVERSE VALVE
132		1	REVERSE VALVE BUSHING
C01		1	O RING
113		1	THROTTLE VALVE ROD
110		1	THROTTLE VALVE
C07		1	O RING
B04		1	GROOVED PIN
4.3	5412060540		INLET KIT
171	5412058445	1	INLET JOINT
C06		1	O RING
237		1	MUFFLER PAD
250	5412057876	1	EXHAUST COVER
C05		1	O RING
S.4	5412060545		HOUSING SERVICE KIT
INCL. 124, J03, C01, 110, C07, C06, 237, C05			
5			SHUT OFF VALVE KIT (INCL. S.5)
643		1	STOP VALVE SPRING
640		1	STOP VALVE
777		1	COLLAR
115		1	THROTTLE VALVE SHEET
704		1	VALVE
759		1	RETURN SPRING
257		1	WASHER
218		1	PACKING
642		1	STOP VALVE REAR COVER
385A		1	ADJUSTING SCREW
S.5			SHUT OFF VALVE SERVICE KIT
C11		1	O RING
C14		1	U-SHAPE PACKING
C12		1	O RING
C13		1	O RING
C17		1	O RING
C16		1	O RING
C15		1	O RING
6	5412103855		SHUT-OFF VALVE KIT TO D-SERIES
Replace 643, C11, C14, 640, C12, C13, 777, 115, 704, 759, C17, 257, 218, 642, 385A, C16, C15, 753, 775, C20, 217, C18, C19			
OTHER PARTS			
372	5412060453	1	PLASTIC COVER
651	5412058474	1	HANGER (HORIZONTAL)
255	5412058526	1	MOTOR FASTENING NUT
753		1	PISTON ROD
	5412060286	1	WARNING LABEL
STANDARD ACCESSORIES			
	5412054452	1	AIR NIPPLE
		1	HEX PIN WRENCH
		1	HEX PIN WRENCH

or kits without ordering number are not sold separately