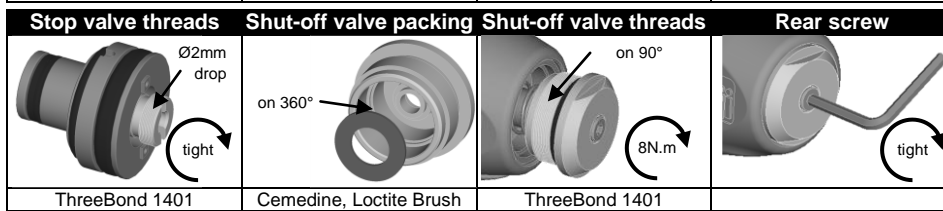
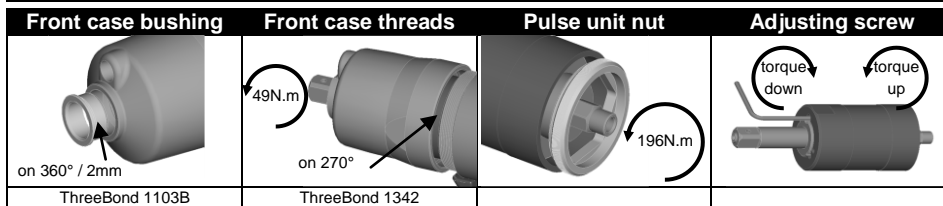
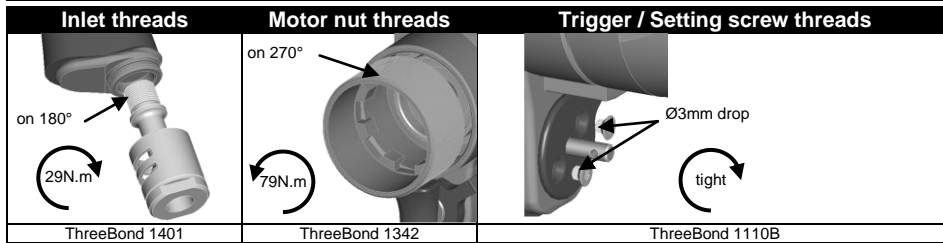
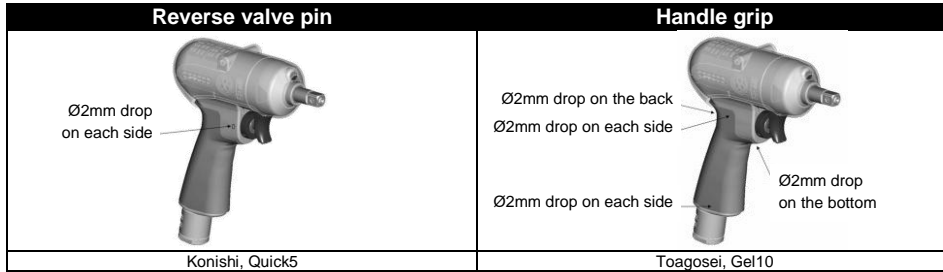
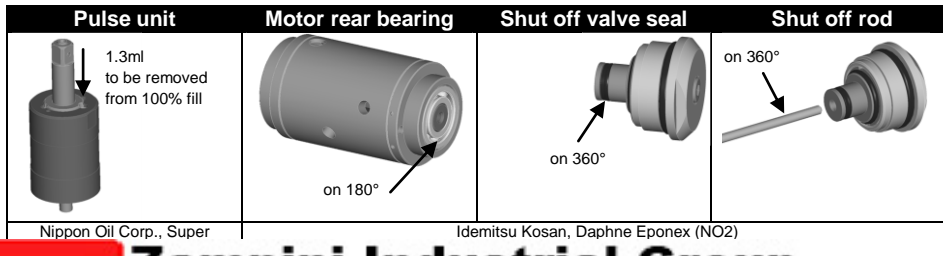


PTF130-T4500-S13S

Mounting



Lubrication



PTF130-T4500-S13S 6151720900


PTF130-T4500-S13S



Specifications

Bolt size	Square drive size		Mass (without socket)		Overall length (without socket)		Air inlet thread	Air hose size		
	mm	mm	in	kg	lb	mm	in	mm	in	
M10-M12	12.7	1/2		1.9	4.1	217.5	8 5/8	PT 1/4	9.5	3/8

Recommended torque range						Rotational frequency	Air consumption (at load)	
N.m		kgf.m		ft.lb			rpm	l/min
70	120	7.1	13.2	51.6	95.8	4500	800	28.2

	Safety manual	2050502163
	Instructions manual	6159949610

Maintenance operations

Every 3 months / 100,000 cycles*
 Every 6 months / 200,000 cycles*
 Every 12 months / 400,000cycles*
 *whichever comes first

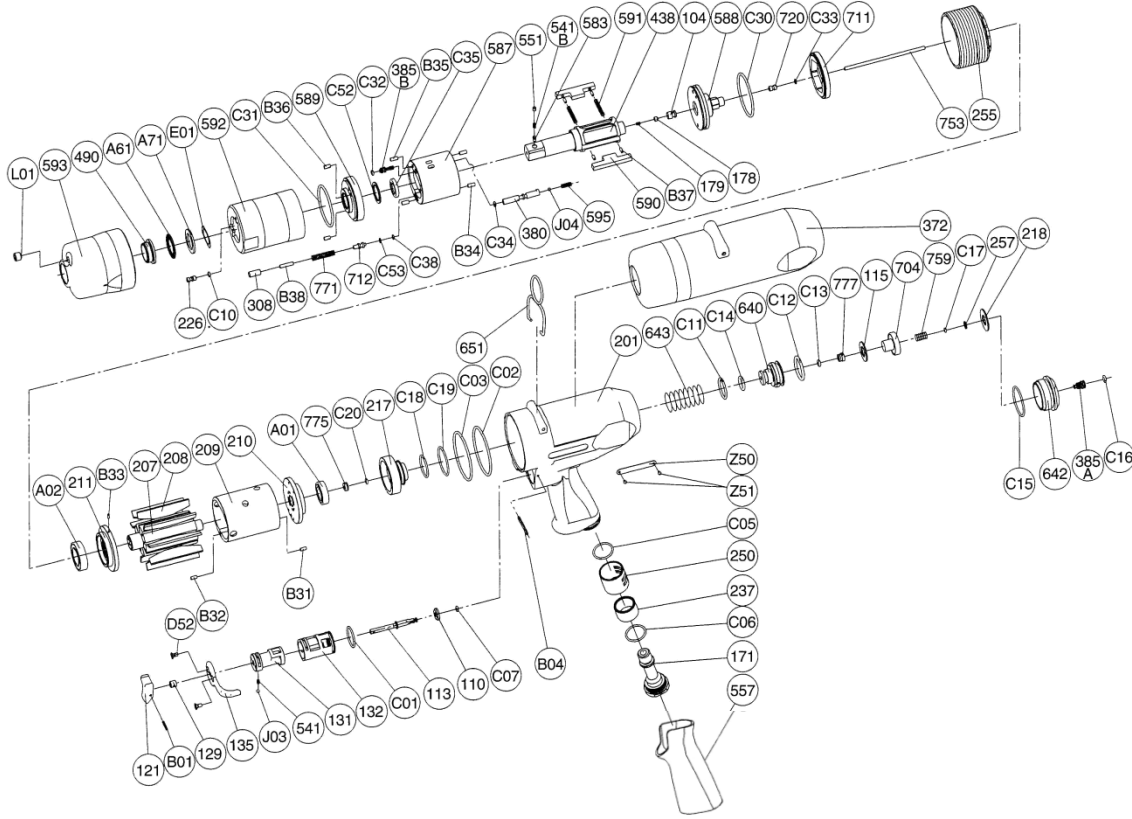
Refill and adjust oil in pulse unit
 Replace parts of service kits
 Check wearing parts and replace if necessary

Zampini Industrial Group

AirToolPro.com

1-800-353-4676

Exploded view



Parts list

Ref No.	Ordering No.	Qty	Description
1			FRONT CASE KIT
L01		1	PLUG
593	5412058569	1	FRONT CASE
490		1	SPINDLE BUSHING
A61		1	NEEDLE BEARING
A71		1	THRUST BEARING
S.1	5412060488		FRONT CASE SERVICE KIT
INCL. L01, 490, A61, A71			
2			PULSE UNIT KIT
2.1			OIL CYLINDER KIT
E01		2	WAVE WASHER
226	5412058454	1	OIL PLUG
C10		1	O RING (HNBR80)
592	5412058568	1	CYLINDER CASE
C32		1	O RING (HNBR80)
385B		1	ADJUSTING SCREW
C52		1	BACK UP RING
C35		1	X RING (HNBR80)
C31		1	O RING (HNBR80)
589	5412058565	1	OIL CYLINDER LOWER PLATE
B36		2	GROOVED PIN
308		1	SPACER
B38		1	NEEDLE ROLLER
771	5412058544	1	SPRING
712		1	DAMPER
C53		1	BACK UP RING
C38		1	O RING (HNBR80)
B35		1	NEEDLE ROLLER
587	5412058563	1	OIL CYLINDER
B34		2	NEEDLE ROLLER
C34		1	O RING (HNBR80)
380		1	ADJUSTING SPINDLE
J04		1	BALL
595	5412058570	1	TORQUE ADJUSTING SPRING
438	5412060438	1	SPINDLE
591		2	BLADE SPRING
590	5412058566	2	SPINDLE BLADE
B37		4	SPRING PIN
179		1	PLUNGER SPRING
178		1	PLUNGER
104		1	BUSHING
588	5412058564	1	OIL CYLINDER UPPER PLATE
C30		1	O RING (HNBR80)
720		1	PISTON
C33		1	O RING
711		1	CYLINDER COVER
2.2	5412060490		SOCKET RETAINER KIT
551		1	PLUG
541B		1	BUTTON RETAINER SPRING (F)
583		1	RETAINER BUTTON (F)
S.2	5412060499		PULSE UNIT SERVICE KIT
INCL. E01, C10, C32, C52, C35, C31, 308, C53, C38, B35, B34, C34, J04, 591, 179, 178, C30, C33			
3			MOTOR KIT
207	5412058550	1	ROTOR
208	5412058551	9	ROTOR BLADE
209	5412058552	1	CYLINDER
B31		1	SPRING PIN
B32		1	SPRING PIN
217		1	BEARING COVER
C19		1	O RING
C18		1	O RING
775		1	SEAL BOX
C20		1	O RING S-3
C02		1	O RING
C03		1	O RING
3.1	5412060505		LOWER PLATE KIT
A02		1	BALL BEARING
211		1	CYLINDER LOWER PLATE
B33		1	SPRING PIN
3.2	5412060510		UPPER PLATE KIT
210		1	CYLINDER UPPER PLATE
A01		1	BALL BEARING
S.3	5412060520		MOTOR SERVICE KIT
INCL. C19, C18, C20, C02, C03, A02, A01			
4			HOUSING KIT
4.1	5412060534		HANDLE KIT
201		1	HOUSING
557		1	PROTECTOR
Z50		1	NAME PLATE
Z51		2	SCREW RIVET
4.2	5412060538		THROTTLE KIT
121		1	THROTTLE VALVE LEVER
B01		1	SPRING PIN
129		1	THROTTLE VALVE ROD BUSHING
135	5412058547	1	REVERSE VALVE LEVER
D52		2	CAP SCREW
541		1	BUTTON RETAINER SPRING (F)
J03		1	BALL
131		1	REVERSE VALVE
132		1	REVERSE VALVE BUSHING
C01		1	O RING
113		1	THROTTLE VALVE ROD
110		1	THROTTLE VALVE
C07		1	O RING
B04		1	GROOVED PIN
4.3	5412060541		INLET KIT
171	5412058548	1	INLET JOINT
C06		1	O RING
237		1	MUFFLER PAD
250	5412057698	1	EXHAUST COVER
C05		1	O RING
S.4	5412060546		HOUSING SERVICE KIT
INCL. 541, J03, C01, 110, C07, C06, 237, C05			
5			SHUT OFF VALVE KIT (INCL. S.5)
643		1	STOP VALVE SPRING
640		1	STOP VALVE
777		1	COLLAR
115		1	THROTTLE VALVE SHEET
704		1	VALVE
759		1	RETURN SPRING
257		1	WASHER
218		1	PACKING
642		1	STOP VALVE REAR COVER
385A		1	ADJUSTING SCREW
S.5			SHUT OFF VALVE SERVICE KIT
C11		1	O RING
C14		1	U-SHAPE PACKING
C12		1	O RING
C13		1	O RING
C17		1	O RING
C16		1	O RING
C15		1	O RING
6	5412103859		SHUT-OFF VALVE KIT TO D-SERIES
Replace 643, C11, C14, 640, C12, C13, 777, 115, 704, 759, C17, 257, 218, 642, 385A, C16, C15, 753, 775, C20, 217, C18, C19			
OTHER PARTS			
372	5412060454	1	PLASTIC COVER
651	5412058474	1	HANGER (HORIZONTAL)
255	5412058558	1	MOTOR FASTENING NUT
753		1	PISTON ROD
	5412060286		WARNING LABEL
STANDARD ACCESSORIES			
	5412054452	1	AIR NIPPLE
		1	HEX PIN WRENCH
		1	HEX PIN WRENCH

Parts or kits without ordering number are not sold separately