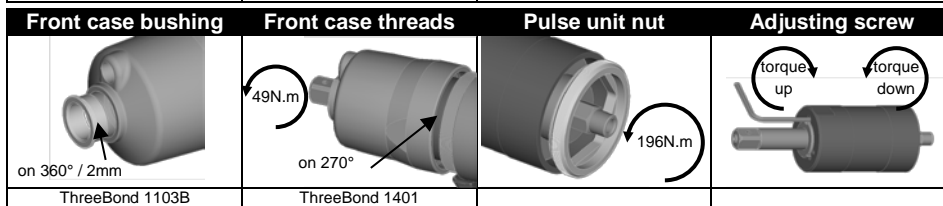
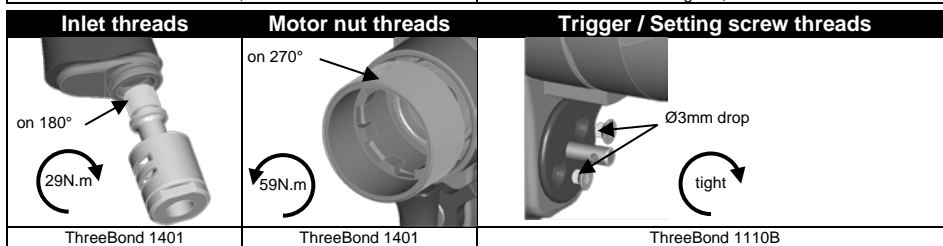
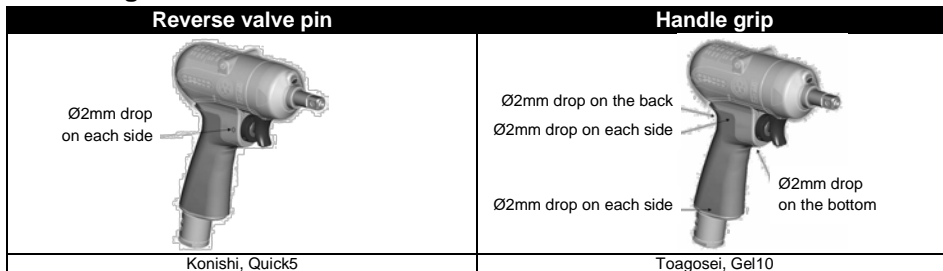
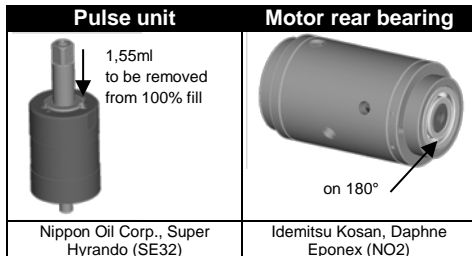



# PTF136-T5000-I13S


## Mounting



## Lubrication



 right tightening clockwise tightening

 left tightening counterclockwise tightening

PTF136-T5000-I13S 6151720780

# PTF136-T5000-I13S



## Specifications

Bolt size	Square drive size		Mass (without socket)		Overall length (without socket)		Air inlet thread	Air hose size	
	mm	in	kg	lb	mm	in		mm	in
M10-M12	12,7	1/2	1,8	4,0	184,0	7 1/4	PT 1/4	9,5	3/8

Recommended torque range						Rotational frequency	Air consumption (at load)	
N.m		kgf.m		ft.lb			rpm	l/min
80	136	8,1	13,8	59,0	100,3	5000	800	28,2

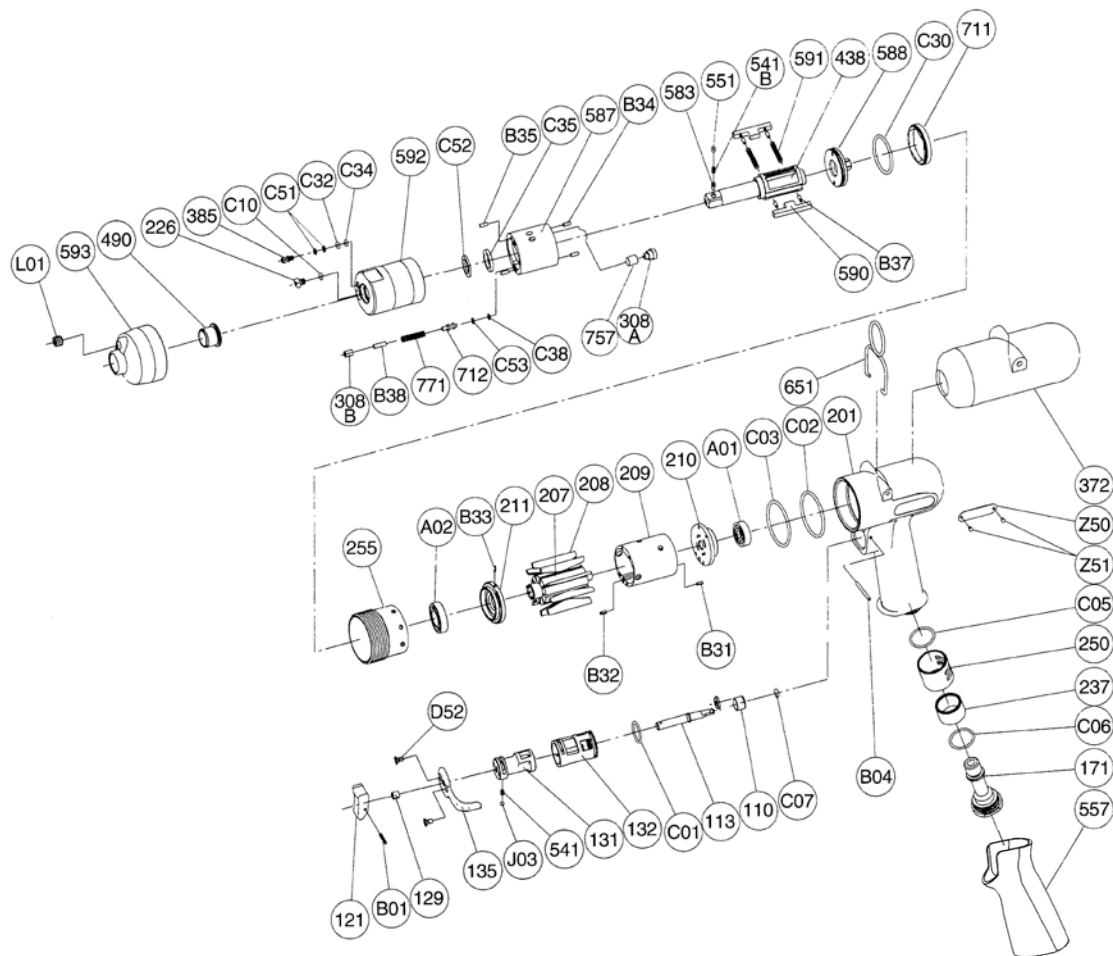
Safety manual	2050502163
Instructions manual	6159949610
EC declaration of conformity	6159949620

## Maintenance operations

Every 3 months / 100,000 cycles\*  
 Every 6 months / 200,000 cycles\*  
 Every 12 months / 400,000cycles\*  
 \*which ever comes first

Refill and adjust oil in pulse unit  
 Replace parts of service kits  
 Check wearing parts and replace if necessary

Exploded view



Parts list

Ref No.	Ordering No.	Qty	Description
1			FRONT CASE KIT
L01		1	PLUG
593	5412058677	1	FRONT CASE
490		1	SPINDLE BUSHING
S.1	5412060485		FRONT CASE SERVICE KIT
INCL. L01, 490			
2			PULSE UNIT KIT
2.1			OIL CYLINDER KIT
226	5412058454	1	OIL PLUG
C10		1	O RING (HNBR80)
592	5412058676	1	CYLINDER CASE
385		1	ADJUSTING SCREW
C51		2	BACK UP RING
C32		1	O RING (HNBR80)
C34		1	O RING (HNBR80)
C52		1	BACK UP RING
C35		1	X RING (HNBR80)
308B		1	SPACER
B38		1	NEEDLE ROLLER
771	5412058544	1	SPRING
712		1	DAMPER
C53		1	BACK UP RING
C38		1	O RING (HNBR80)
B35		2	NEEDLE ROLLER
587	5412058674	1	OIL CYLINDER
B34		2	NEEDLE ROLLER
757		1	NEEDLE
308A		1	SPACER
438	5412060466	1	SPINDLE
591		2	BLADE SPRING
590	5412058566	2	SPINDLE BLADE
B37		4	SPRING PIN
588	5412058675	1	OIL CYLINDER UPPER PLATE
C30		1	O RING (HNBR80)
711		1	CYLINDER COVER
2.2	5412060490		SOCKET RETAINER KIT
551		1	PLUG
541B		1	BUTTON RETAINER SPRING (F)
583		1	RETAINER BUTTON (F)
S.2	5412060494		PULSE UNIT SERVICE KIT
INCL. C10, C51, C32, C52, C34, C35, 308B, C53, C38, B35, B34, 591, C30			
3			MOTOR KIT
207	5412058550	1	ROTOR
208	5412058551	9	ROTOR BLADE
209	5412058668	1	CYLINDER
B31		1	SPRING PIN
B32		1	SPRING PIN
C02		1	O RING
C03		1	O RING
3.1	5412060505		LOWER PLATE KIT
A02		1	BALL BEARING
211		1	CYLINDER LOWER PLATE
B33		1	SPRING PIN
3.2	5412060510		UPPER PLATE KIT
210		1	CYLINDER UPPER PLATE
A01		1	BALL BEARING
S.3	5412060515		MOTOR SERVICE KIT
INCL. C02, C03, A02, A01			
4			HOUSING KIT
4.1	5412060527		HANDLE KIT
201		1	HOUSING
557		1	PROTECTOR
Z50		1	NAME PLATE
Z51		2	SCREW RIVET
4.2	5412060538		THROTTLE KIT
121		1	THROTTLE VALVE LEVER
B01		1	SPRING PIN
129		1	THROTTLE VALVE ROD BUSHING
135	5412058547	1	REVERSE VALVE LEVER
D52		2	CAP SCREW
541		1	BUTTON RETAINER SPRING (F)
J03		1	BALL
131		1	REVERSE VALVE
132		1	REVERSE VALVE BUSHING
C01		1	O RING
113		1	THROTTLE VALVE ROD
110		1	THROTTLE VALVE
C07		1	O RING
B04		1	GROOVED PIN
4.3	5412060541		INLET KIT
171	5412058548	1	INLET JOINT
C06		1	O RING
237		1	MUFFLER PAD
250	5412057698	1	EXHAUST COVER
C05		1	O RING
S.4	5412060546		HOUSING SERVICE KIT
INCL. 541, J03, C01, 110, C07, C06, 237, C05			
OTHER PARTS			
372	5412060460	1	PLASTIC COVER
651	5412058474	1	HANGER (HORIZONTAL)
255	5412058669	1	MOTOR FASTENING NUT
	5412060286	1	WARNING LABEL
STANDARD ACCESSORIES			
	5412054452	1	AIR NIPPLE
		1	HEX PIN WRENCH
		1	HEX PIN WRENCH

Parts or kits without ordering number are not sold separately