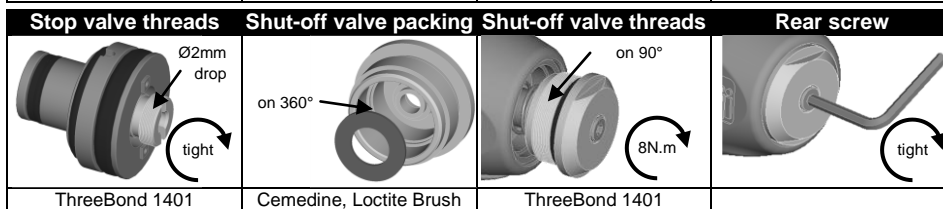
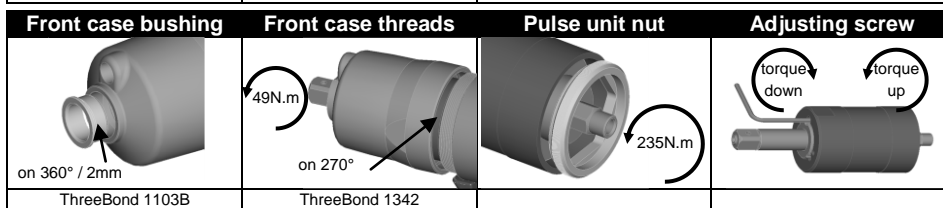
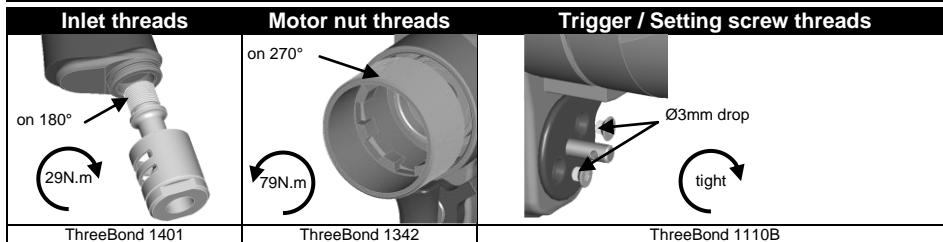
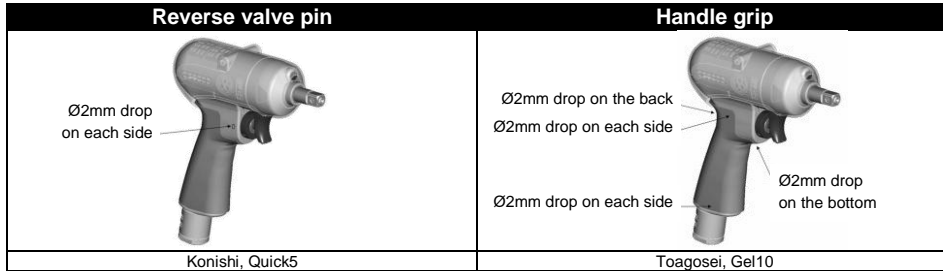
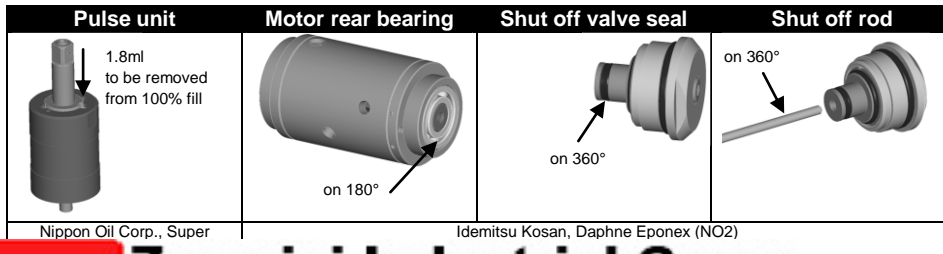


# PTF165-T3400-S13S

## Mounting



## Lubrication



PTF165-T3400-S13S 6151720910


# PTF165-T3400-S13S



## Specifications

Bolt size	Square drive size		Mass (without socket)		Overall length (without socket)		Air inlet thread	Air hose size	
	mm	in	kg	lb	mm	in	in	mm	in
M12-M14	12.7	1/2	2.1	4.6	227.5	9	PT 1/4	9.5	3/8

Recommended torque range						Rotational frequency	Air consumption (at load)	
N.m		kgf.m		ft.lb			rpm	l/min
110	150	11.2	15.3	81.1	110.6	3400	850	30.0

	Safety manual	2050502163
	Instructions manual	6159949610

## Maintenance operations

Every 3 months / 100,000 cycles\*  
 Every 6 months / 200,000 cycles\*  
 Every 12 months / 400,000cycles\*  
 \*whichever comes first

Refill and adjust oil in pulse unit  
 Replace parts of service kits  
 Check wearing parts and replace if necessary

**Zampini Industrial Group**

**AirToolPro.com**

**1-800-353-4676**

