

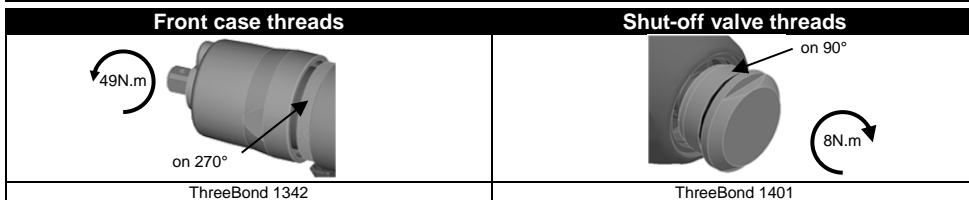
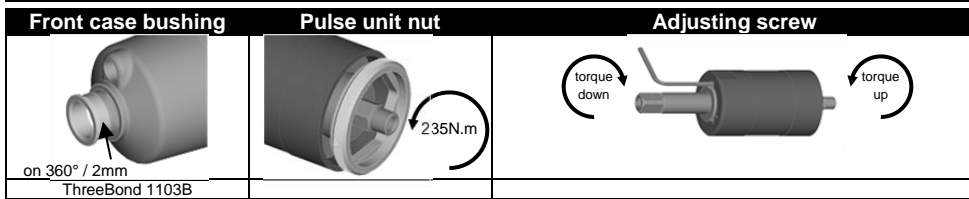
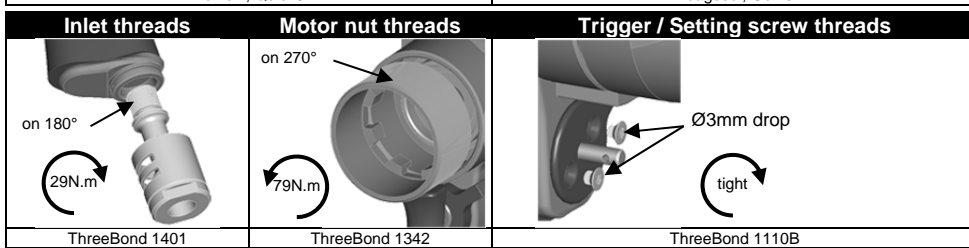
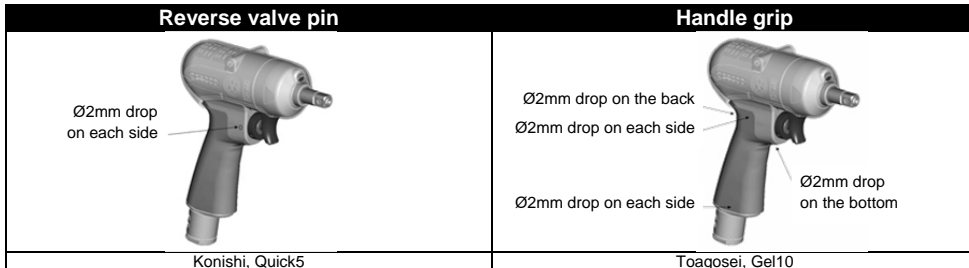
Part no 6159949643
 Issue no 07
 Series no D
 Page 4/4

PTF165-T3400-S13S

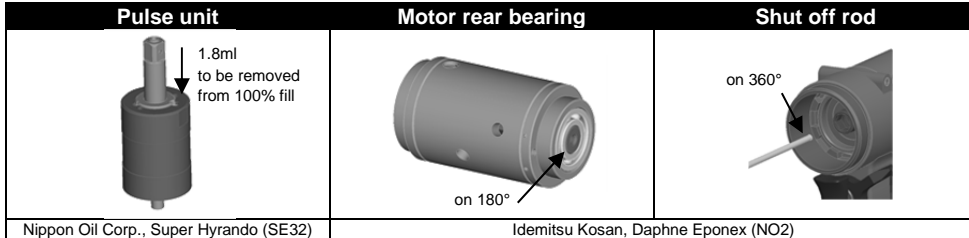
Desoutter  **Industrial**
 Desoutter Ltd - Zodiac Unit 4 - Boundary way
 Hemel Hempstead - Herts - UK HP2 7SJ

Part no 6159949643
 Issue no 07
 Series no D
 Page 1 / 4

Mounting



Lubrication



PTF165-T3400-S13S 6151720910


PTF165-T3400-S13S



Specifications

Bolt size	Square drive size		Mass (without socket)		Overall length (without socket)		Air inlet thread	Air hose size		
	mm	mm	in	kg	lb	mm	in	mm	in	
M12-M14	12.7	1/2		2.1	4.6	227.5	9	PT 1/4	9.5	3/8

Recommended torque range						Rotational frequency	Air consumption (at load)	
N.m		kgf.m		ft.lb			rpm	l/min
110	150	11.2	15.3	81.1	110.6	3400	850	30.0

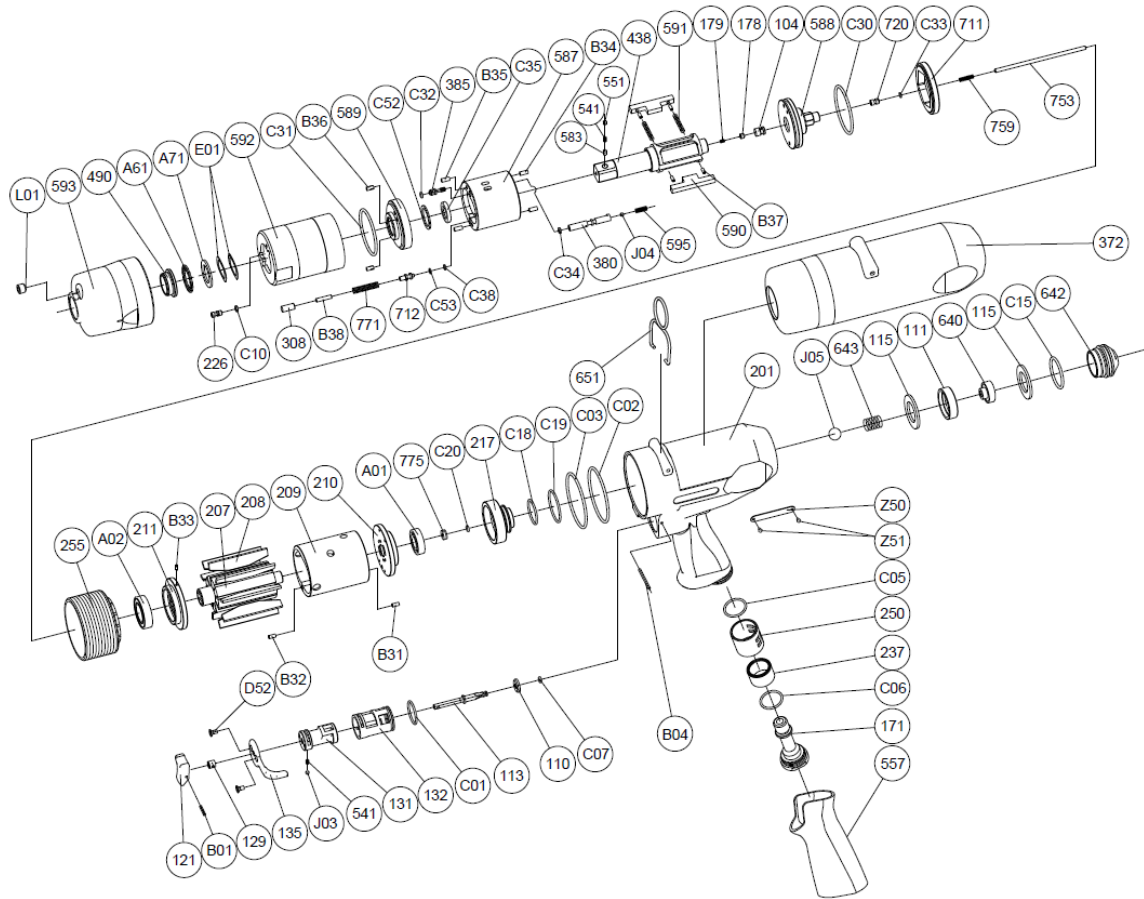
	Safety manual	2050502163
	Instructions manual	6159949610

Maintenance operations

Every 3 months / 100,000 cycles*
 Every 6 months / 200,000 cycles*
 Every 12 months / 400,000cycles*
 *whichever comes first

Refill and adjust oil in pulse unit
 Replace parts of service kits
 Check wearing parts and replace if necessary

Exploded view



Parts list

Ref No.	Ordering No.	Qty	Description
1 FRONT CASE KIT			
L01		1	PLUG
593	5412058597	1	FRONT CASE
490		1	SPINDLE BUSHING
A61		1	NEEDLE BEARING
A71		1	THRUST BEARING
S.1	5412060488		FRONT CASE SERVICE KIT
INCL. L01, 490, A61, A71			
2 PULSE UNIT KIT			
2.1 OIL CYLINDER KIT			
E01		2	WAVE WASHER
226	5412058454	1	OIL PLUG
C10		1	O RING (HNBR80)
592	5412058596	1	CYLINDER CASE
C32		1	O RING (HNBR80)
385B		1	ADJUSTING SCREW
C52		1	BACK UP RING
C35		1	X RING (HNBR80)
C31		1	O RING (HNBR80)
589	5412058593	1	OIL CYLINDER LOWER PLATE
B36		2	GROOVED PIN
308		1	SPACER
B38		1	NEEDLE ROLLER
771	5412058544	1	SPRING
712		1	DAMPER
C53		1	BACK UP RING
C38		1	O RING (HNBR80)
B35		2	NEEDLE ROLLER
587	5412058591	1	OIL CYLINDER
B34		2	NEEDLE ROLLER
C34		1	O RING (HNBR80)
380		1	ADJUSTING SPINDLE
J04		1	BALL
595	5412104055	1	TORQUE ADJUSTING SPRING
438	5412060465	1	SPINDLE
591		2	BLADE SPRING
590	5412058594	2	SPINDLE BLADE
B37		4	SPRING PIN
179		1	PLUNGER SPRING
178		1	PLUNGER
104		1	BUSHING
588	5412058592	1	OIL CYLINDER UPPER PLATE
C30		1	O RING (HNBR80)
720		1	PISTON
C33		1	O RING
711		1	CYLINDER COVER
2.2	5412060490		SOCKET RETAINER KIT
551		1	PLUG
541B		1	BUTTON RETAINER SPRING (F)
583		1	RETAINER BUTTON (F)
S.2	5412060500		PULSE UNIT SERVICE KIT
INCL. E01, C10, C32, C52, C35, C31, 308, C53, C38, B35, B34, C34, J04, 591, 179, 178, C30, C33			
3 MOTOR KIT			
207	5412058580	1	ROTOR
208	5412058581	9	ROTOR BLADE
209	5412058582	1	CYLINDER
B31		1	SPRING PIN
B32		1	SPRING PIN
217		1	BEARING COVER
C19		1	O RING
C18		1	O RING
775		1	SEAL BOX
C20		1	O RING S-3
C02		1	O RING
C03		1	O RING
3.1	5412060506		LOWER PLATE KIT
A02		1	BALL BEARING
211		1	CYLINDER LOWER PLATE
B33		1	SPRING PIN
3.2	5412060511		UPPER PLATE KIT
210		1	CYLINDER UPPER PLATE
A01		1	BALL BEARING
S.3	5412060521		MOTOR SERVICE KIT
INCL. C19, C18, C20, C02, C03, A02, A01			
4 HOUSING KIT			
4.1	5412060535		HANDLE KIT
201		1	HOUSING
557		1	PROTECTOR
Z50		1	NAME PLATE
Z51		2	SCREW RIVET
4.2	5412060538		THROTTLE KIT
121		1	THROTTLE VALVE LEVER
B01		1	SPRING PIN
129		1	THROTTLE VALVE ROD BUSHING
135	5412058547	1	REVERSE VALVE LEVER
D52		2	CAP SCREW
541		1	BUTTON RETAINER SPRING (F)
J03		1	BALL
131		1	REVERSE VALVE
132		1	REVERSE VALVE BUSHING
C01		1	O RING
113		1	THROTTLE VALVE ROD
110		1	THROTTLE VALVE
C07		1	O RING
B04		1	GROOVED PIN
4.3	5412060542		INLET KIT
171	5412058548	1	INLET JOINT
C06		1	O RING
237		1	MUFFLER PAD
250	5412057698	1	EXHAUST COVER
C05		1	O RING
S.4	5412060547		HOUSING SERVICE KIT
INCL. 541, J03, C01, 110, C07, C06, 237, C05			
5	5412103856		SHUT OFF VALVE KIT (INCL. S.5)
111		1	THROTTLE VALVE WASHER
640		1	STOP VALVE
642		1	STOP VALVE REAR COVER
S.5	5412103857		SHUT OFF VALVE SERVICE KIT
J05		1	BALL
643	5412103984	1	STOP VALVE SPRING
115		2	THROTTLE VALVE SHEET
C15		1	O RING
6	5412103880		PUSH ROD KIT
753		1	PISTON ROD
759		1	RETURN SPRING
OTHER PARTS			
372	5412060455	1	PLASTIC COVER
651	5412058474	1	HANGER (HORIZONTAL)
255	5412058586	1	MOTOR FASTENING NUT
	5412060286	1	WARNING LABEL
STANDARD ACCESSORIES			
	5412054452	1	AIR NIPPLE
		1	HEX PIN WRENCH
		1	HEX PIN WRENCH
7	5412103881		SHUT-OFF VALVE KIT TO D-SERIES
INCL. 111, 640, 642, J05, 643, 115, C15, 753, 759, 217, C18, C19, 775, C20			

or kits without ordering number are not sold separately

