

**Instruction Manual**  
**PL70-1050EN**  
07/08/2013

# Cleco®

**A6R-2219**  
**Reversible Axial Piston Power Motors**



*For additional product information visit our website at <http://www.apextoolgroup.com>*



**Zampini Industrial Group**  
**AirToolPro.com**  
**1-800-353-4676**

Industrial Air & Electric Tools  
We Sell Reliability!  
In Business Since 1987  
FREE Expert Assistance - Call Now

## For this Instruction Manual

This Instruction Manual is the Original Instruction Manual intended for all persons who will operate and maintain these tools.

This Instruction Manual

- provides important notes for the safe and efficient use of these tools.
- describes the function and operation of the A6R series tools.
- serves as a reference guide for technical data, service intervals and spare parts ordering.
- provides information on optional equipment.

### Identification text:

A6R represents all models of the axial piston power motor as described in this manual

→ indicates a required action

• indicates a list

<..> indicates a reference number from the exploded parts drawings

**Arial** indicates an important feature or instruction written in **Arial Bold**

### Identification graphic:

→ indicates a directional movement

↓ indicates a function or force

### Copyright protection:

Apex Tool Group, LLC reserves the right to modify, supplement or improve this document or the product without prior notice. This document may not be reproduced in any way, shape or form, in full or parts thereof, or copied to another natural or machine readable language or to a data carrier, whether electronic, mechanical, optical or otherwise without the express permission of Apex Tool Group, LLC.

**Cleco®**  
Nomenclature

**PL70-1050EN**  
07/08/2013

Model Number	Maximum Allowable RPM *		Stall Torque		Starting Torque		Weight		Gear Ratio	Maximum Overhung Load @ Stall **	
	@ Max. HP	Free Speed	ft. lbs.	Nm	ft. lbs.	Nm	lbs.	kg		lbs.	kg
A6R-2219	152	290	130	176	96	130	43	19.5	11.9:1	1000	454

\* Note: These motors must be operated with sufficient load to prevent speed from exceeding the maximum allowable free speed.

\*\* Note: All models assume overhung load located at 2.25" (57.15mm) from the face of the motor.



<b>1</b>	<b>Safety</b>	<b>6</b>
1.1	Warning and notes.....	6
1.2	Basic requirements for safe working practices .....	7
1.3	Operator training.....	7
1.4	Personal protective equipment .....	7
1.5	Designated use.....	8
1.6	Codes and standards .....	8
1.7	Noise and vibration.....	8
<b>2</b>	<b>Scope of supply, transport and storage</b>	<b>9</b>
2.1	Items supplied .....	9
2.2	Transport .....	9
2.3	Storage .....	9
<b>3</b>	<b>Product description</b>	<b>10</b>
3.1	General description .....	10
3.2	Operation and functional elements.....	10
<b>4</b>	<b>Accessories</b>	<b>11</b>
<b>5</b>	<b>Before initial operation</b>	<b>12</b>
5.1	Ambient conditions .....	12
5.2	Air supply.....	12
5.3	Connecting the air supply to the tool .....	12
5.4	Tool set up .....	13
<b>6</b>	<b>First operation</b>	<b>14</b>
6.1	Putting into use.....	14
<b>7</b>	<b>Troubleshooting</b>	<b>15</b>
<b>8</b>	<b>Maintenance</b>	<b>16</b>
8.1	Service schedule .....	16
8.1.1	Calculating a customer specific maintenance plan.....	17
8.2	Lubricants .....	17
<b>9</b>	<b>Repair instructions</b>	<b>18</b>
9.1	Lubrication .....	18
9.2	Valving .....	18
9.3	Distributor bushing assembly .....	19
9.4	Duplex bearing assembly .....	19
9.5	Bevel gear timing mark.....	19

<b>10</b>	<b>Spare parts</b>	
10.1	Power Unit .....	20
10.2	Double Stage Gearing Assembly.....	24
<b>11</b>	<b>Technical data</b>	<b>24</b>
11.1	A6R-2219 Specifications .....	24
<b>12</b>	<b>Service</b>	<b>25</b>
12.1	Replacement parts .....	25
12.2	Tool repairs .....	25
12.3	Warranty repairs .....	25
<b>13</b>	<b>Disposal</b>	<b>26</b>

# 1 Safety

## 1.1 Warnings and notes

Warning notes are identified by a signal word and a pictogram.

- The signal word indicates the severity and probability of the impending danger.
- The pictogram indicates the type of danger.

WARNING!



**WARNING** identifies a potentially **hazardous** situation which, if not avoided, may result in serious injury.

CAUTION!



**CAUTION** identifies a potentially **hazardous** situation which, if not avoided, may result in minor or moderate injury or property and environmental damage.

NOTE



**NOTE** identifies general information which may include application tips or useful information but no hazardous situations.



Important information that must be read and understood by all personnel installing, operating or maintaining this equipment.

## 1.2 Basic requirements for safe working practices



All personnel involved with the installation, operation or maintenance of these tools must read and understand all safety instructions contained in this manual. Failure to comply with these instructions could result in serious injury or property damage.

These safety instructions are not intended to be all inclusive. Study and comply with all applicable National, State and Local regulations.

---

### CAUTION!



#### Work Area:

- Ensure there is enough space in the work area.
- Keep the work area clean.
- Keep the work area well ventilated.

#### Personnel Safety:

- Inspect the air supply hoses and fittings. Do not use damaged, frayed or deteriorated hoses.
- Make sure the air supply hose is securely attached to the tool.
- Install adequate guards for all moving parts of the power motor or it's application.

#### Safety working with and around power motors:

- Make sure the motor is securely mounted to the application.
  - Make sure the output spindle is fully engaged with the application.
  - Disconnect the air supply before servicing the motor
- 

## 1.3 Operator training

All personnel must be properly trained before operating the A6R tools. The A6R tools are to be repaired by fully trained personnel only.

## 1.4 Personal protective equipment

When working



- Wear eye protection to protect against flying metal splinters.
- Wear hearing protection

Danger of injury by being caught by moving equipment.



- Wear a hairnet
- Do not wear close fitting clothing
- Do not wear jewelry

## **1.5 Designated use**

The A6R is designed exclusively as a power source to be integrated into an application.

- Do not modify the A6R, any guard or accessory.
- Use only with accessory parts which are approved by the manufacturer.
- Do not use in any improper manner that can cause damage to the motor.

## **1.6 Codes and standards**

It is mandatory that all national, state and local codes and standards be followed.

## **1.7 Noise and vibration**

No data available on this equipment.



## Scope of Supply, Transport and Storage

## 2 Scope of supply, transport and storage

### 2.1 Items supplied

Check shipment for transit damage and ensure that all items have been supplied:

- 1 A6R-2219
- 1 PL70-1050EN instruction manual
- 1 Declaration of Conformity (if applicable)
- 1 Lubrication sheet
- 1 Warranty statement

### 2.2 Transport

Transport and store the A6R in the original packaging. The packaging is recyclable.

### 2.3 Storage

For short term storage (less than 2 hours) and protection against damage:

➔ Place the A6R in a location on the workbench to avoid accidental startup.

For storage longer than 2 hours:

➔ Disconnect the air supply from the A6R

Object	Time Period	Storage Temperature
A6R without air supply	No guideline	-13°F to 104°F (-25°C to 40°C)

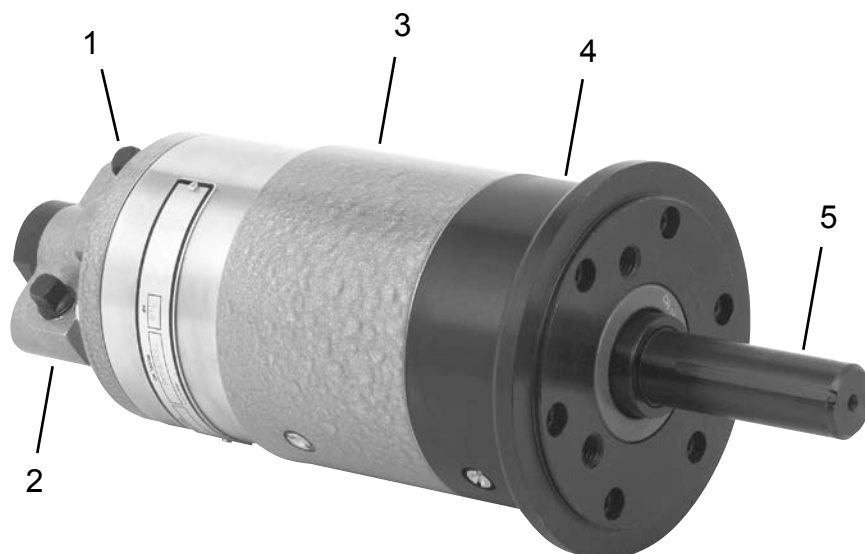
### 3 Product description

#### 3.1 General description

- Pneumatic powered axial piston power motor
- 1.9 Horsepower
- Reversible valving option
- Rear exhaust

#### 3.2 Operation and functional elements

This section describes the operational and functional elements of the A6R.



Ref.	Description
1	Air Inlet
2	Head Assembly
3	Motor Assembly
4	Gearing Assembly
5	Output Spindle

## **4 Accessories**

## 5 Before initial operation

### 5.1 Ambient conditions

Ambient temperature: 41°F (5°C) to a maximum of 104°F (40°C)

Acceptable relative humidity: 25% to 90%, non-condensing

### 5.2 Air supply

Parameter	Description
Air Hose	Minimum inside diameter: 3/8" (9,5 mm) Maximum length: 16.4' (5 m)
Working pressure range	58 to 101.5 psi (400 to 700 kPa) Recommended: 90 psi (620 kPa)
Compressed air	Air quality according to ISO 8573-1, quality class 2.4.3 The compressed air must be clean and dry.

#### NOTE



To attain consistent results, maintain a constant working pressure using a suitable air line unit consisting of a filter, regulator and lubricator.

- The inside diameter of the air hose must be free of residue, clean if necessary.
- Spray a few drops of light air tool oil into the air inlet adapter.
- Adjust the lubricator to a minimum setting to reduce the amount of excess oil in the exhaust air.

#### Oil identification

Part No.	Packaged	Designation	Vendor
540397	1 Quart (0.94 liter)	Airlube 10W/NR-420LB DR	Fuchs Lubricants Co.
533485	1 US Gallon (3.78 liter)	Airlube 10W/NR-420LB DR	Fuchs Lubricants Co.

### 5.3 Connecting the air supply to the tool

#### WARNING!



The air hose can disconnect from the tool by itself and whip around uncontrollably.

- Turn off the compressed air before connecting to the tool.
- Securely connect the air hose to the tool.
- Turn on the compressed air.

## **5.4 Tool set up**

The tool must be configured for the application.

## **6 First operation**

### **6.1 Putting into use**

- ➔ Make sure the air supply is securely attached and the compressor is turned on.
- ➔ Make sure the output spindle is properly engaged with the application.
- ➔ Make sure all necessary guards are in place to protect operator from rotating mechanisms.

## 7 Troubleshooting

Malfunction	Possible causes	Remedy
Tool does not start	Improper air supply	→ Make sure there is adequate air pressure at the tool air inlet
	Motor dry from lack of lubrication	→ Apply several drops of air tool oil to the air inlet. Using the cam, manually rotate the motor. Reconnect the air supply and run the motor to free it up.
	Broken gears	→ Tool disassembly required (parts replacement)
Tool runs slow and lacks torque	Improper air supply	→ Make sure there is adequate air pressure at the tool air inlet
	Motor dry from lack of lubrication	→ Apply several drops of air tool oil to the air inlet. Using the cam, manually rotate the motor. Reconnect the air supply and run the motor to free it up.

## 8 Maintenance

**CAUTION!**



Danger of injury from accidental start up.  
Turn off the compressed air before performing any maintenance.

### 8.1 Service schedule

Only qualified and trained personnel are permitted to perform maintenance on these tools.

Regular maintenance reduces operating faults, repair costs and downtime. In addition to the following service schedule, implement a safety related maintenance program that takes the local regulations for repair and maintenance for all operating phases of the tool into account.

Maintenance Interval	Rundowns	Designation
Daily	Daily	<ul style="list-style-type: none"><li>→ Visual inspection of air supply hose and connections</li><li>→ Inspect airline filter, regulator and lubricator for proper operation</li><li>→ Check the tool excessive vibration or unusual noises</li><li>→ Visual inspection of all external components of the tool</li></ul>
W1	100,000	<ul style="list-style-type: none"><li>→ Inspect the air hose for damage or wear</li><li>→ inspect the output spindle for damage or wear</li><li>→ Inspect the air inlet adapter for a secure fit</li><li>→ Check the maximum free speed</li></ul>
W2	500,000	<ul style="list-style-type: none"><li>→ Check individual parts and replace if necessary</li><li>→ Replace O-rings and seals</li><li>→ Clean mufflers</li></ul>
W3	1,000,000	<ul style="list-style-type: none"><li>→ Check individual parts and replace if necessary</li><li>→ Throttle valve (if equipped)</li><li>→ Motor</li><li>→ Gearing</li></ul>

This maintenance schedule uses values that are valid for most applications. For a specific maintenance interval, refer to 8.1.1 Calculating a customer-specific maintenance plan.



### 8.1.1 Calculating a customer specific maintenance plan

A service interval W(1, 2, 3) depends on the following factors:

Factor	Value assumed in "Service Schedule"	Description
<b>V</b>	V1 = 100,000 V2 = 500,000 V3 = 1,000,000	Number of cycles after a maintenance measure is prescribed by Apex Tool Group.
<b>T1</b>	1.8 seconds	Specific cycle time, measured in life and endurance tests.
<b>T2</b>	2 seconds	Actual cycle time, depending on the application.
<b>S</b>	1; 2; 3	Number of shifts per day.
<b>VS</b>	750	Number of cycles per shift.

T2, S and VS are variable factors and can differ depending on the specific application.

Example for service interval W2:



After 500,000 cycles (V),  
a specific cycle time of 1.8 seconds (T1)  
with an actual cycle time of 3 seconds and  
3 completed shifts per day and 750 rundowns per shift.

$$W(1, 2, 3) = \frac{V \times T1}{T2 \times S \times VS} \quad W2 = \frac{500000 \times 1.8}{3 \times 3 \times 750} = 133 \text{ (days)}$$

You will need to perform the maintenance indicated as W2 after an operating time of 133 days.)

## 8.2 Lubricants

For proper function and long service life, use of the correct grease is essential.

**Grease lubricants recommended for this tool.**

Part No.	Packaged	Designation	Vendor
A123771	16 oz. (0.45 kg)	Alvania® EP 00	Shell
A123771	16 oz. (0.45 kg)	Gadus S2 V220 00	Shell

## 9 Repair instructions

### 9.1 Lubrication

#### ***“DO NOT SUBSTITUTE LUBRICANTS”***

The proper grades of oil and grease are essential too the efficient operation of these air motors. Heavy oil will not flow through a lubricator at a satisfactory rate too insure proper lubrication to the motor. Greases that are too stiff will channel and fail to lubricate properly and greases that are tool thin will blow out of the motor. Improper lubrication or inadequate lubricants can cause extensive motor damage.

Grease fittings are located on the motor housing and the gear housing for each stage of gearing. The following quantities of A123771 grease are provided during factory assembly and these same amounts must be provided whenever the air motor is disassembled.

- Motor assembly: 6 oz.
- Gearing assembly (each): 2 oz.

During normal operation, the motor will loose a small amount of grease through the exhaust making it necessary to add grease at regular intervals. After each 50 hours of operation add 2.0 oz. of A123771 grease to the motor housing.

**CAUTION!**



***Excessive grease in the motor housing will cause a loss in motor performance. Not enough grease will cause premature motor failure.***

The gear case will lose grease through the motor. The motor will siphon gear grease, saturated with airline oil, through the exhaust. After 200 hours of operation, add 0.5 oz. of A123771 grease into each gear housing.

**CAUTION!**



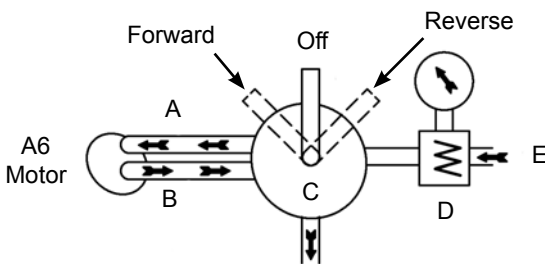
***Too much grease in the gear case will force the seal out of the front housing.***

### 9.2 Valving

If a valve is used, it should have a full flow air passage to utilize full powe of the motor. For quick motor stops, an all-ports closed-in-neutral type valve with a spring return should be used.

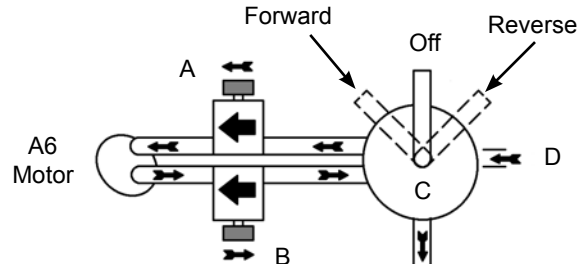
#### **Torque Output Control**

- A) When air enters from this side
- B) it must exhaust without restrictions.
- C) Four-Way valve
- D) Pressure regulator
- E) Air supply



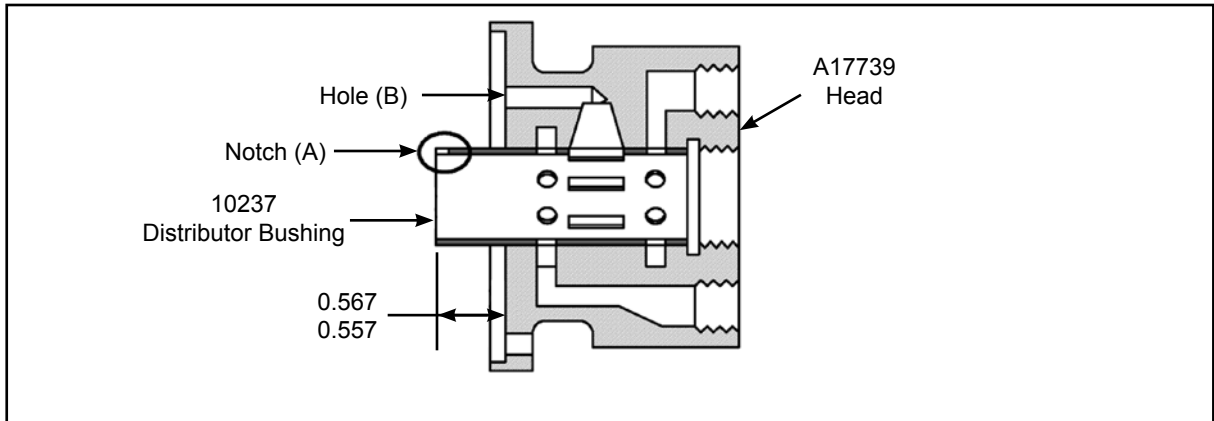
#### **Control Forward and Reverse Speeds**

- A) Metered flow control (inlet)
- B) Free (open) flow control (exhaust)
- C) Four-Way valve
- D) Air supply



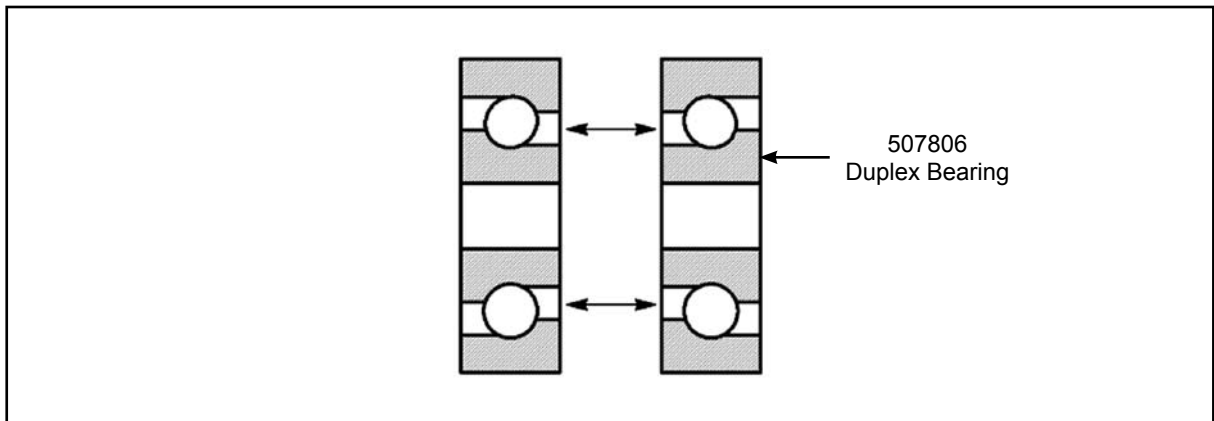
### 9.3 Distributor bushing assembly

Press the new busing into the head to the dimension shown. The notch (A) in the bushing must align with the hole (B) in the head.



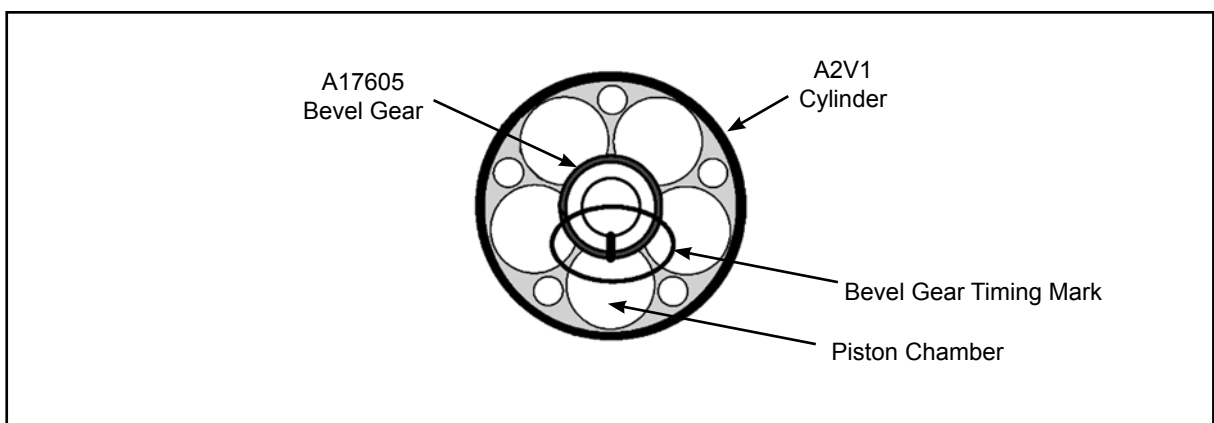
### 9.4 Duplex bearing assembly

The small diameters of the bearings must face each other when assembled.

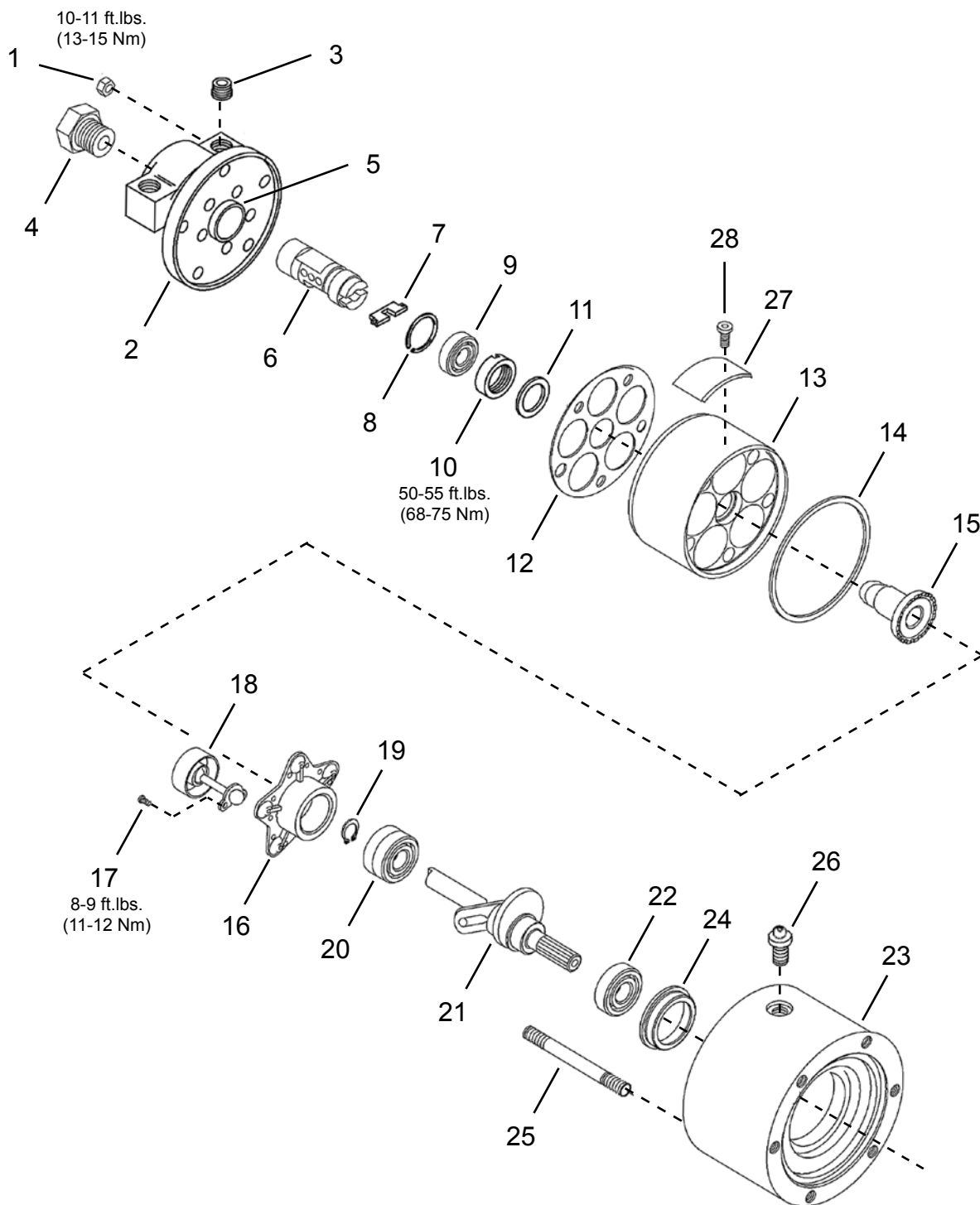


### 9.5 Bevel gear timing mark

Make sure the timing mark on the bevel gear is aligned with the center of a piston chamber before assembling the driveshaft assembly into the cylinder.



## 10.1 Power Unit



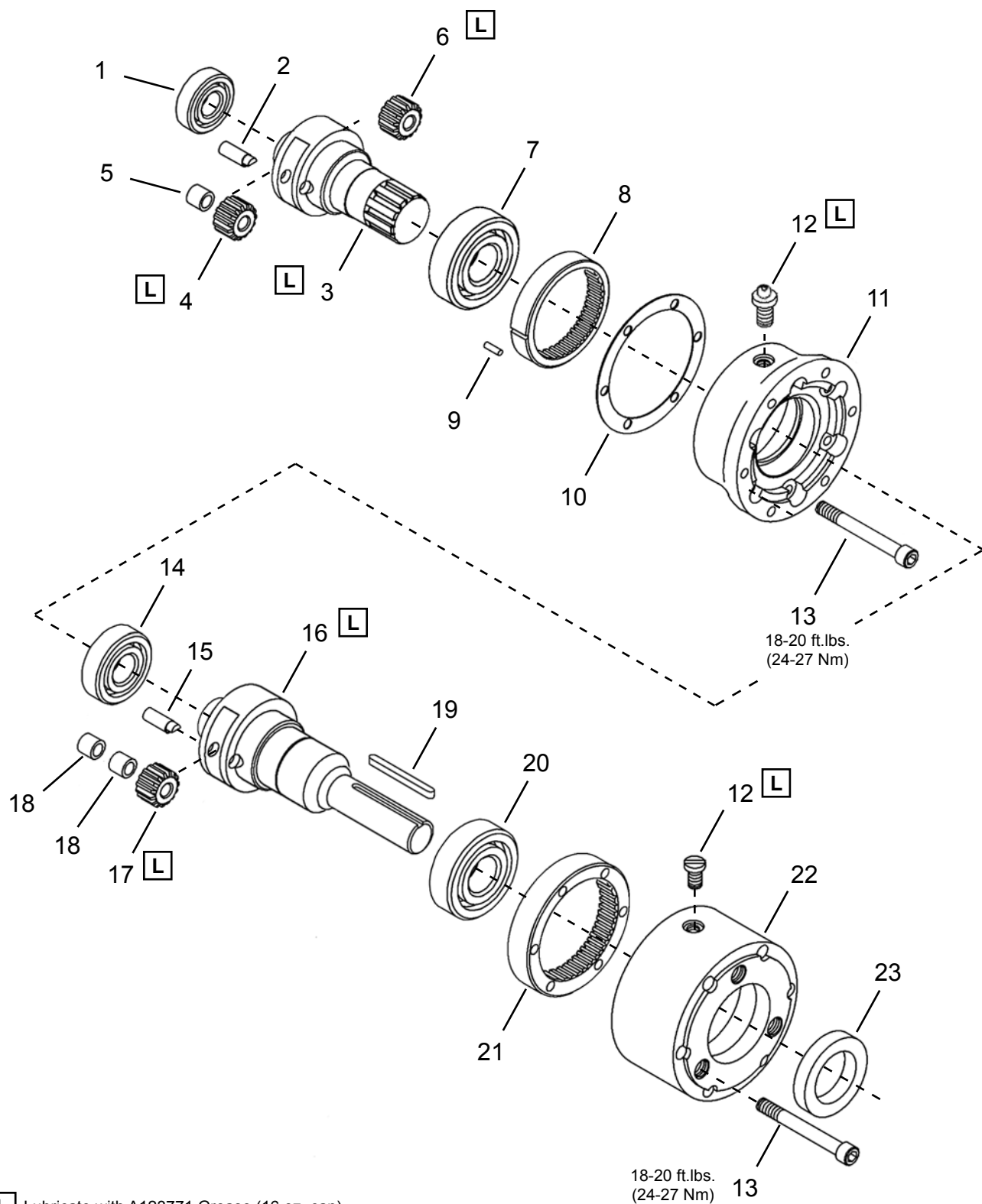
## 10.1 Power Unit

Ref	Number	#	X	EN
				Description
1	C108S	5	10	Head Assembly Nut
2	A17739	1		Head Assembly (includes Ref. 3-5)
3	B112E	2	2	Square Head Pipe Plug (3/8 NPT)
4	17748	1	1	Reducer Bushing
5	10237	1	1	Distributor Bushing
6	A10226	1		Distributor (includes Ref. 7-8)
7	2VR43	1	1	Drive Key
8	800090	1	3	Retaining Ring
9	2V85	1	2	Ball Bearing
10	2V169	1		Lock Nut
11	2V272	1		Washer
12	2V1891	1	3	Head Gasket
13	A2V1	1		Cylinder
14	10027	1	3	Cylinder Gasket
15	A17605	1	1	Bevel Gear
--	533944	1		Socket Plate Assembly (includes Ref. 16-18)
16	507692	1		Socket Plate
17	B135Z	10	20	Socket Head Cap Screw (10-24 NC-2 x 1/4)
18	A2V2	5	5	Piston Assembly
19	800251	1	3	Retaining Ring
20	507806	1	2	Duplex Ball Bearing
21	507808	1		Driveshaft
22	22G155	1	2	Ball Bearing
23	A18317	1		Rear Housing (includes Ref. 24-25)
24	18364PT	1	1	Rear Housing Bearing Liner
25	27401PT	5	5	Rear Housing Stud (5/16-24 x 6.188)
26	RG78	1	1	Grease Fitting
27	530322	1		Nameplate (not included in 507490 power unit)
28	534820	2		Drive Screw (not included in 507490 power unit)

(#) Quantity

(X) Recommended Spare Parts (quantity shown based on 1-5 tools in operation)

## 10.2 Double Stage Gearing Assembly



**L** Lubricate with A123771 Grease (16 oz. can)

## 10.2 Double Stage Gearing Assembly

Ref	Number	#	X	EN
				Description
1	525424	1	2	Ball Bearing
2	10032	2	4	Planetary Gear Pin
3	30052PT	1		Gear Cage
4	A18322	2	4	Planetary Gear (14T) (includes Ref. 5)
5	21155	2	4	Planetary Gear Needle Bearing
6	18323	1	2	Pinion Gear (20T)
7	30075	1	2	Ball Bearing
8	10019	1		Ring Gear
9	DP120PT	1	2	Ring Gear Pin
10	10026	1	3	Center Housing Gasket
11	30062PT	1		Center Housing
12	30775PT	1	1	Flush Type Grease Fitting
13	B127D	12	12	Socket Head Cap Screw (5/16-18 x 3)
14	30076PT	1	2	Ball Bearing
15	30058PT	2	4	Planetary Gear Pin
16	544124PT	1		Gear Cage Output Spindle
17	A30055	2	4	Planetary Gear (16T) (includes Ref. 18)
18	11700	4	8	Planetary Gear Needle Bearing
19	30072PT	1	3	Output Spindle Key
20	30063PT	1	2	Ball Bearing
21	30056PT	1		Ring Gear
22	30049	1		Front Housing
23	30057PT	1	3	Oil Seal
24	RG78	1	1	Grease Fitting

(#) Quantity

(X) Recommended Spare Parts (quantity shown based on 1-5 tools in operation)

## 11 Technical data

### 11.1 A6R-2219 Specifications

Model Number	Maximum Allowable RPM *		Stall Torque		Starting Torque		Weight		Gear Ratio	Maximum Overhung Load @ Stall **	
	@ Max. HP	Free Speed	ft. lbs.	Nm	ft. lbs.	Nm	lbs.	kg		lbs.	kg
A6R-2219	152	290	130	176	96	130	43	19.5	11.9:1	1000	454

\* Note: These motors must be operated with sufficient load to prevent speed from exceeding the maximum allowable free speed.

\*\* Note: All models assume overhung load located at 2.25" (57.15mm) from the face of the motor.



## **12 Service**

### **12.1 Replacement parts**

**NOTE**



Use only original Cleco replacement parts. Failure to comply can result in reduced power and increased service requirements. The tool warranty may be voided if replacement parts are not manufactured or approved by Apex Tool Group.

### **12.2 Tool repairs**

Only qualified and trained personnel are to repair this equipment.

### **12.3 Warranty repairs**

All warranty repairs are to be performed by an authorized Apex Tool Group service center. Contact your local representative for assistance with warranty repair claims.

## 13 Disposal

---

**CAUTION!!**



Injuries and environmental damage from improper disposal.

Components and auxiliary materials of the tool pose risks to health and the environment.

- Capture auxiliary materials (oils, greases) when drained and dispose of them properly.
- Separate the packaging components and dispose of them properly.
- Comply with all applicable local regulations.



Observe local disposal guidelines for all components of this tool and its packaging.

---



## Sales & Service Centers

**Note:** All locations may not service all products. Please contact the nearest Sales & Service Center for the appropriate facility to handle your service requirements.

Detroit, Michigan

**Apex Tool Group  
Sales & Service Center**  
2630 Superior Court  
Auburn Hills, MI 48326  
Tel: (248) 393-5640  
Fax: (248) 391-6295

Houston, Texas

**Apex Tool Group  
Sales & Service Center**  
6550 West Sam Houston  
Parkway North, Suite 200  
Houston, TX 77041  
Tel: (713) 849-2364  
Fax: (713) 849-2047

Lexington, South Carolina

**Apex Tool Group**  
670 Industrial Drive  
Lexington, SC 29072  
Tel: (800) 845-5629  
Tel: (803) 951-7544  
Fax: (803) 358-7681

Los Angeles, California

**Apex Tool Group  
Sales & Service Center**  
6881 Stanton Avenue  
Unit B  
Buena Park, CA 90621  
Tel: (714) 994-1491  
Fax: (714) 994-9576

Seattle, Washington

**Apex Tool Group  
Sales & Service Center**  
2865 152nd Avenue N.E.  
Redmond, WA 98052  
Tel: (425) 497-0476  
Fax: (425) 497-0496

York, Pennsylvania

**Apex Tool Group  
Sales & Service Center**  
3990 East Market Street  
York, PA 17402  
Tel: (717) 755-2933  
Fax: (717) 757-5063

Brazil

**Apex Tool Group  
Sales & Service Center**  
Av. Liberdade, 4055  
Zona Industrial - Iporanga  
18087-170 Sorocaba  
SP Brazil  
Tel: +55 15 2383929  
Fax: +55 15 2383260

Canada

**Apex Tool Group  
Sales & Service Center**  
7631 Bath Road  
Mississauga, Ont. L4T  
3T1  
Canada  
Tel: (866) 691-6212  
Tel: (905) 673-4400

China

**Cooper (China) Co., Ltd.**  
an Apex Tool Group, LLC  
company  
955 Sheng Li Road,  
Heqing Pudong, Shanghai  
China 201201  
Tel: +86-21-28994176  
Fax: +86-21-51118446

England

**Apex Tool Group  
GmbH & Co. OHG**  
C/O Spline Gauges  
Piccadilly, Tamworth  
Staffordshire B78 2ER  
United Kingdom  
Tel: +44 1827 8741 28  
Fax: +44 1827 8741 28

France

**Apex Tool Group S.N.C.**  
25 rue Maurice Chevalier  
B.P. 28  
77831 Ozoir-La-Ferrière  
Cedex, France  
Tel: +33 1 64 43 22 00  
Fax: +33 1 64 43 17 17

Germany

**Apex Tool Group  
GmbH & Co. OHG**  
Industriestraße 1  
73463 Westhausen  
Germany  
Tel: +49 (0) 73 63 81 0  
Fax: +49 (0) 73 63 81 222

Hungary

**Apex Tool Group  
Hungaria Kft**  
Platánfa u.2  
9027 Győr  
Hungary  
Tel: +36 96 66 1383  
Fax: +36 96 66 1135

India

**Apex Power Tools India  
Private Limited**  
Gala No. 1, Plot No. 5  
S. No. 234, 235 & 245  
Indialand Global  
Industrial Park  
Taluka-Mulsi, Phase I  
Hinjawadi, Pune 411057  
Maharashtra, India

Mexico

**Apex Tool Group México  
S. de R.L. de C.V.**  
Vialidad El Pueblito #103  
Parque Industrial Querétaro  
Querétaro, QRO 76220  
Mexico  
Tel: +52 (442) 211-3800  
Fax: +52 (442) 103-0443

Apex Tool Group, LLC  
1000 Lufkin Road  
Apex, NC 27539  
Phone: 919-387-0099  
Fax: 919-387-2614  
www.apextoolgroup.com

# Cleco®