

Parts Manual
PL70-1099EN
01/28/2016

Cleco®

22M5540-60
Single Reduction Rotary Vane Power Motor



For additional product information visit our website at <http://www.apextoolgroup.com>



Zampini Industrial Group
AirToolPro.com
1-800-353-4676

Industrial Air & Electric Tools
We Sell Reliability!
In Business Since 1987
FREE Expert Assistance - Call Now



Zampini Industrial Group
AirToolPro.com
1-800-353-4676

Industrial Air & Electric Tools
We Sell Reliability!
In Business Since 1987
FREE Expert Assistance - Call Now

The original language of this manual is English.

Product Safety Information:

Intended Use:

This pneumatic motor is to be used exclusively as a power source to be integrated into an application.

For additional product safety information refer to Apex Tool Group, LLC or Apex Tool Group GmbH & Co. OHG document CE-2005, General Safety Instructions for Air Motors



The motor must not be modified in any manner unless approved in writing by Apex Tool Group, LLC or Apex Tool Group GmbH & Co. OHG. All safety devices must be properly installed and maintained in good working order.

Declaration of Incorporation:

We affirm that this machine complies with the basic requirements of the following directives (2006/42/EC) and is intended for installation / assembly in a / with other machine(s). Commissioning of the incomplete machine is prohibited until such time that the incomplete machine has been incorporated in a machine that complies with the EC Machinery Directive 2006/42/EC and for which there is an EC Declaration of Conformity in accordance with Appendix II A. We furthermore declare that the special technical documentation for the incomplete machine is in accordance with Appendix VII Part B. We undertake to have it passed on to the market surveillance body upon request by our representative for the compilation of technical documentation. The following Sections of Appendix I of Directive 2006/42/EC have been fulfilled: 1.1.2, 1.1.3, 1.1.5, 1.3.2, 1.3.4, 1.5. Applied harmonized standards are ISO 12100-1: 2004-04, ISO 12100-2:2004-04.

The name, job function and address of the person authorized to compile the technical file.

Mr. Vishnu Irigireddy
Director of Global R&D- Mechanical Engineering
Apex Tool Group
670 Industrial Drive
Lexington, SC 29072

I. V. Vishnu Varadhan

Signature: Vishnu Irigireddy
Date: November 23, 2015

Air Line Lubrication:

Use Apex Tool Group, LLC or Apex Tool Group GmbH & Co. OHG's lightweight air tool oil 500021 (available in quantities shown in the following chart) or an SAE-5 lightweight spindle oil.

Part No.	Packaged	Designation
540397	1 Quart (0.94 liter)	Airlube 10W/NR-420LB DR
533485	1 US Gallon (3.78 liter)	Airlube 10W/NR-420LB DR

Recommended Grease:

Part No.	Packaged	Designation
A123771	16 oz. (0.45 kg)	Shell Alvania® EP 00
540450	16 oz. (0.45 kg)	Chevron Black Pearl® EP NLGI

Air Supply Line:

Parameter	Description
Air Hose	Air inlet: 1/4" (6,4 mm) 5/16" I.D. Air Hose: Maximum length run of 10.0' (3 m) 3/8" I.D. Air Hose: Runs over 10.0' (3 m)
Working pressure range	60 to 100 psi (414 to 689 kPa) Recommended: 90 psi (620 kPa)
Compressed air	Air quality according to ISO 8573-1, quality class 2.4.3 The compressed air must be clean and dry.

Service and Repair:

Tool service and repair should be performed by an authorized Apex Tool Group, LLC or Apex Tool Group GmbH & Co. OHG Center. Refer to the last page of this manual for locations.

Disposal:

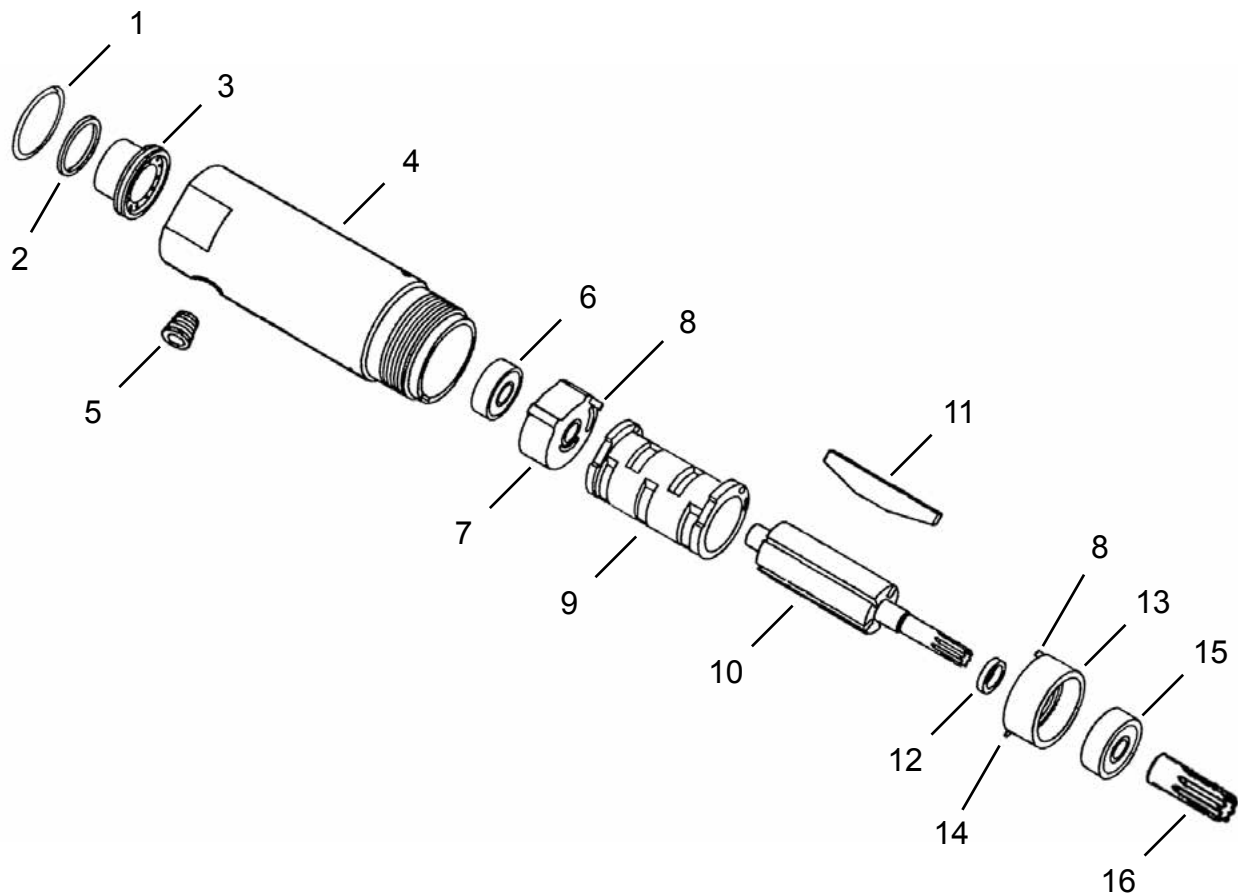


Observe local disposal guidelines for all components of this tool and its packaging.

Copyright Protection:

Apex Tool Group, LLC or Apex Tool Group GmbH & Co. OHG reserves the right to modify, supplement or improve this document or the product without prior notice. This document may not be reproduced in any way, shape or form, in full or parts thereof, or copied to another natural or machine readable language or to a data carrier, whether electronic, mechanical, optical or otherwise without the express permission of Apex Tool Group, LLC or Apex Tool Group GmbH & Co. OHG.

“A”



Cleco®
Motor Assembly

PL70-1099EN
01/28/2016

Illustration "A": Motor Assembly

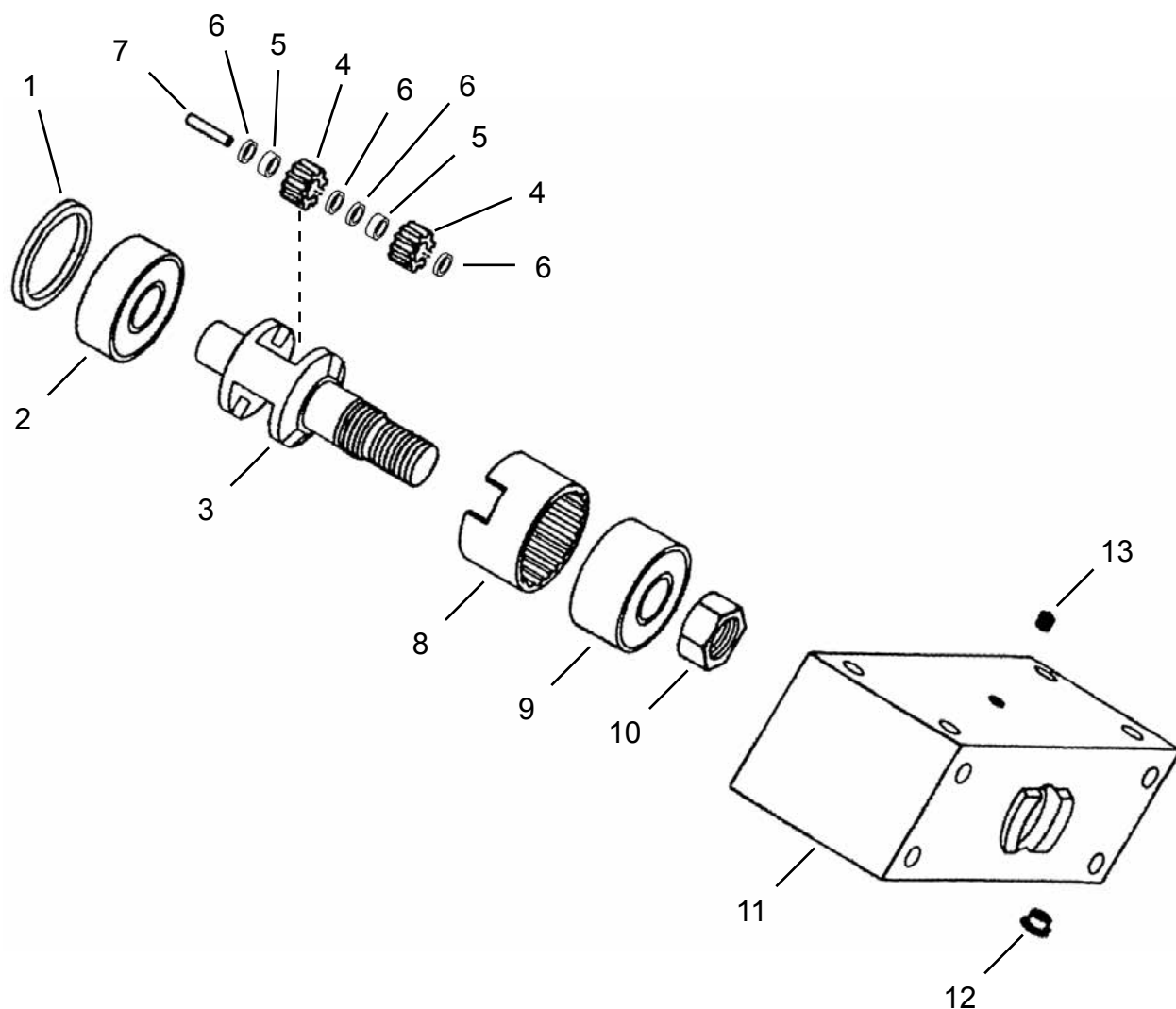
Ref	Number	#	X	EN
				Description
1	2690PT	1	3	Retaining Ring
2	1838PT	1	3	O-Ring
3	2685	1	1	Muffler
4	2870	1		Motor Housing
5	2957	1	2	Pipe Plug (1/4-18 NPTF)
6	538PT	1	2	Ball Bearing
7	02-7013	1		Rear Bearing Plate (includes 1 Ref. 8)
8	1041	2	4	Locating Pin
9	2255PT	1		Cylinder
10	7654S	1		Rotor
11	2253PT	4	8	Rotor Blade
12	2017PT	1		Rotor Spacer
13	2959	1		Front Bearing Plate (includes 1 Ref. 8 and Ref. 14)
14	2964	1	2	Locating Pin
15	500PT	1	2	Ball Bearing
16	02-7562	1	2	Sun Gear

(#) Quantity

(X) Recommended Spare Parts (quantity shown based on 1-5 tools in operation)

Cleco®
Gearing Assembly

"B"



Cleco®
Gearing Assembly

PL70-1099EN
01/28/2016

Illustration "B": Gearing Assembly

Ref	Number	#	X	EN
				Description
1	2022PT	1		Bearing Spacer
2	503PT	1	2	Ball Bearing
3	7819PT	1		Planetary Gear Carrier (1/2"-20 Threaded Spindle: Termination -60)
4	7623	4	8	Planetary Gear (includes Ref. 5 and 2 Ref. 6)
5	7610PT	4	8	Planetary Gear Bearing
6	7611	8	16	Planetary Gear Bearing Retainer
7	2509PT	2	4	Planetary Gear Shaft
8	2533PT	1		Ring Gear
9	557	1	2	Ball Bearing (Double)
10	2958	1	1	Lock Nut
11	2819PT	1		Planetary Gear Housing (includes Ref. 12)
12	1664	1	2	Grease Fitting
13	2831	1	2	Set Screw
14	14-0812	1	2	Wrench (3/4") (not shown)

(#) Quantity

(X) Recommended Spare Parts (quantity shown based on 1-5 tools in operation)



POWER TOOLS SALES & SERVICE CENTERS

Please note that all locations may not service all products.

Contact the nearest Apex Tool Group Sales & Service Center for the appropriate facility to handle your service requirements.

NORTH AMERICA | SOUTH AMERICA

Detroit, Michigan

Apex Tool Group
2630 Superior Court
Auburn Hills, MI 48236
Phone: +1 (248) 393-5640
Fax: +1 (248) 391-6295

Lexington, South Carolina

Apex Tool Group
670 Industrial Drive
Lexington, SC 29072
Phone: +1 (800) 845-5629
Phone: +1 (919) 387-0099
Fax: +1 (803) 358-7681

Louisville, Kentucky

Apex Tool Group
1000 Glengarry Drive
Suite 150
Fairdale, KY 40118
Phone: +1 (502) 708-3400
apexpowertools.com/service

Canada

Apex Tool Canada, Ltd.
7631 Bath Road
Mississauga, Ontario L4T 3T1
Canada
Phone: (866) 691-6212
Fax: (905) 673-4400

Mexico

Apex Tool Group
Manufacturing México
S. de R.L. de C.V.
Vialidad El Pueblito #103
Parque Industrial Querétaro
Querétaro, QRO 76220
Mexico
Phone: +52 (442) 211 3800
Fax: +52 (800) 685 5560

Brazil

Apex Tool Group
Ind. Com. Ferram, Ltda.
Av. Liberdade, 4055
Zona Industrial Iporanga
Sorocaba, São Paulo
CEP# 18087-170
Brazil
Phone: +55 15 3238 3820
Fax: +55 15 3238 3938

EUROPE | MIDDLE EAST | AFRICA

England

Apex Tool Group
GmbH & Co. OHG
C/O Spline Gauges
Piccadilly, Tamworth
Staffordshire B78 2ER
United Kingdom
Phone: +44 1827 8727 71
Fax: +44 1827 8741 28

France

Apex Tool Group S.A.S.
25 rue Maurice Chevalier
B.P. 28
77831 Ozoir-La-Ferrière
Cedex, France
Phone: +33 1 64 43 22 00
Fax: +33 1 64 43 17 17

Germany

Apex Tool Group
GmbH & Co. OHG
Industriestraße 1
73463 Westhausen
Germany
Phone: +49 (0) 73 63 81 0
Fax: +49 (0) 73 63 81 222

Hungary

Apex Tool Group
Hungária Kft.
Platánfa u. 2
9027 Győr
Hungary
Phone: +36 96 66 1383
Fax: +36 96 66 1135

ASIA PACIFIC

Australia

Apex Tool Group
519 Nurigong Street, Albury
NSW 2640
Australia
Phone: +61 2 6058 0300

China

Apex Power Tool Trading
(Shanghai) Co., Ltd
Building A8, No. 38
Dongsheng Road
Pudong, Shanghai
China 201201
Phone: +86 21 60880320
Fax: +86 21 60880298

India

Apex Power Tools India
Private Limited
Gala No. 1, Plot No. 5
S. No. 234, 235 & 245
Indialand Global
Industrial Park
Taluka-Mulsi, Phase I
Hinjawadi, Pune 411057
Maharashtra, India
Phone: +91 020 66761111

Japan

Apex Tool Group Japan
Korin-Kaikan 5F,
3-6-23 Shibakoen, Minato-Ku,
Tokyo 105-0011, JAPAN
Phone: +81-3-6450-1840
Fax: +81-3-6450-1841

Korea

Apex Tool Group Korea
#1503, Hibrand Living Bldg.,
215 Yangjae-dong,
Seocho-gu, Seoul 137-924,
Korea
Phone: +82-2-2155-0250
Fax: +82-2-2155-0252

Cleco®

Apex Tool Group, LLC

1000 Lufkin Road
Apex, NC 27539
Phone: +1 (919) 387-0099
Fax: +1 (919) 387-2614
www.apexpowertools.com