

Parts Manual
PL71-41MF-900
04/08/2011

Cleco®

41MF-900 Series
Non-Reversible Rotary Vane Power Motors



For additional product information visit our website at <http://www.apextoolgroup.com>



Zampini Industrial Group

AirToolPro.com

1-800-353-4676

Industrial Air & Electric Tools

We Sell Reliability!

In Business Since 1987

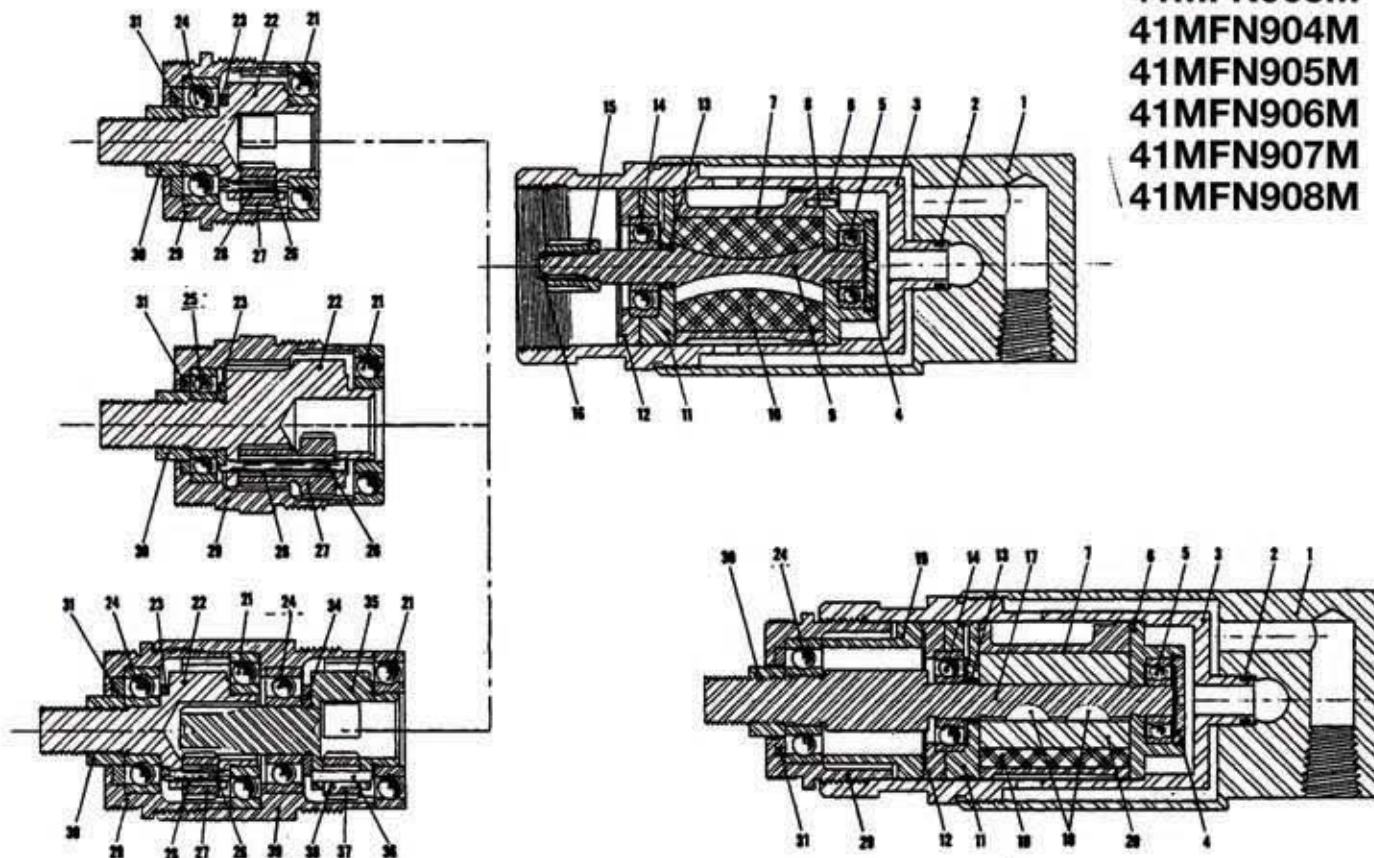
FREE Expert Assistance - Call Now

Cleco®

3/4 hp MOTORS

Right Hand Rotation

41MFN900M
 41MFN901M
 41MFN902M
 41MFN903M
 41MFN904M
 41MFN905M
 41MFN906M
 41MFN907M
 41MFN908M



REF. NO.	PART NO.	DESCRIPTION
1	1015612	Rear Head
2	1008680	O-Ring
3	1015600	Motor Housing
4	1008051	Bearing Lock Nut
5	1001532	Ball Bearing
6	1016201	Rear Plate
7	1008691	Cylinder
8	1008265	Pin (Incl. in #7)
9	1009258	Rotor (41MF-901,05)
	1008685	Rotor - 9T (41MF-902,06)
	1008686	Rotor - 6T (41MF-903,04,07,08)
10	1008690	(4) Rotor Blade
11	1008692	Front Plate
12	1004916	Clamp Washer
13	1007990	Rotor Spacer
14	1004638	Ball Bearing
15	1009251	Pinion (41MF-901,05)
16	1008106	Retaining Ring (41MF-901,05)
17	1008682	Work Spindle (41MF-900)
18	1008600	(2) Woodruff Key (41MF-900)
19	1008683	Nose Spacer (41MF-900)
20	1008681	Rotor (41MF-900)
21	1005003	Ball Bearing (41MF-901,02,03,04,05,06,07,08)
22	1006559	Planet Cage (41MF-902,03,08), Incl: #23
	1008988	Planet Cage (41MF-904), Incl: #23
	1009803	Planet Cage (41MF-901,05,06,07), Incl: #23
23	1009802	Planet Washer (41MF-901,05,06,07)
	1006540	Planet Washer (41MF-902,03,04,08)
24	1005002	Ball Bearing (41MF-900,01,02,03,05,06,07,08)
25	1005061	Ball Bearing (41MF-904)
26	1004983	(3) Planet Pin (41MF-901,05,06,07)
	1004941	(3) Planet Pin (41MF-902,03,08)
	1005010	(3) Planet Pin (41MF-904)

REF. NO.	PART NO.	DESCRIPTION
27	1006439	(3) Planet Gear (41MF-901,05,06,0)
	1004940	(3) Planet Gear - 15T (41MF-902,08)
	1004971	(3) Planet Gear - 18T (41MF-903)
	1005008	(3) Planet Gear - 21T (41MF-904)
28	1004984	(33) Needle Roller (41MF-901,05,06,07)
	1004942	(24) Needle Roller (41MF-902,03,08)
	1005024	(33) Needle Roller (41MF-904)
29	1015676	Nose (41MF-900)
	1009068	Nose/Intl Gear (41MF-900)
	1009064	Nose/Intl Gear (41MF-901,02,05,06,07,08)
	1016343	Nose/Intl Gear (41MF-904)
30	1004945	Spindle Nut
31	1008990	Felt Washer (41MF-904)
	1004943	Felt Washer (41MF-900,01,02,03,05,06,07,08)
34	1006542	Planet Washer (41MF-905)
	1006540	Planet Washer (41MF-906,07,08)
35	1008885	Planet Cage (41MF-905)
	1008451	Planet Cage (41MF-906,07)
	1009412	Planet Cage (41MF-908)
36	1004983	(3) Planet Pin (41MF-905)
	1004941	(3) Planet Pin (41MF-906,07,08)
37	1006439	(3) Planet Gear - 15T (41MF-905)
	1004940	(3) Planet Gear - 18T (41MF-906)
	1004971	(3) Planet Gear - 21T (41MF-907,08)
38	1004984	(33) Planet Roller (41MF-905)
	1004942	(24) Planet Roller (41MF-906,07,08)
39	1008863	Gear Housing (41MF-905,06)
	1009038	Gear Housing (41MF-907,08)
*	1015869	Muffler

(*) PART NOT SHOWN



Zampini Industrial Group

AirToolPro.com

1-800-353-4676

Industrial Air & Electric Tools

We Sell Reliability!

In Business Since 1987

FREE Expert Assistance - Call Now

SERVICE NOTES

Catalog Number	Spindle Speed (rpm)	Stall Torque
41MFN900M	18,000	0.7 Ft-lbs.
41MFN901M	4,500	2.8 Ft-lbs.
41MFN902M	3,000	4.2 Ft-lbs.
41MFN903M	2,000	6.3 Ft-lbs.
41MFN904M	1,500	8.7 Ft-lbs.
41MFN905M	1,000	11.2 Ft-lbs.
41MFN906M	725	16.8 Ft-lbs.
41MFN907M	500	25.2 Ft-lbs.
41MFN908M	330	37.8 Ft-lbs.

FEATURES

Right Hand Rotation Motor
1/2"-20 Threaded Spindle
3/4 horsepower

POWER SOURCE

Requirements: 90-100 PSI air pressure,
minimum 1/4" I.D. hose,
air inlet thread size: 1/4" NPT



Zampini Industrial Group

AirToolPro.com

1-800-353-4676

Industrial Air & Electric Tools

We Sell Reliability!

In Business Since 1987

FREE Expert Assistance - Call Now

Sales & Service Centers

Note: All locations may not service all products. Please contact the nearest Sales & Service Center for the appropriate facility to handle your service requirements.

Dallas, TX
**Apex Tool Group
Sales & Service Center**
1470 Post & Paddock
Grand Prairie, TX 75050
Tel: 972-641-9563
Fax: 972-641-9674

Detroit, MI
**Apex Tool Group
Sales & Service Center**
2630 Superior Court
Auburn Hills, MI 48326
Tel: 248-391-3700
Fax: 248-391-7824

Houston, TX
**Apex Tool Group
Sales & Service Center**
6550 West Sam Houston
Parkway North, Suite 200
Houston, TX 77041
Tel: 713-849-2364
Fax: 713-849-2047

Lexington, SC
Apex Tool Group
670 Industrial Drive
Lexington, SC 29072
Tel: 800-845-5629
Tel: 803-951-7544
Fax: 803-358-7681

Los Angeles, CA
**Apex Tool Group
Sales & Service Center**
15503 Blackburn Avenue
Norwalk, CA 90650
Tel: 562-623-4457
Fax: 562-802-1718

Seattle, WA
**Apex Tool Group
Sales & Service Center**
2865 152nd Avenue N.E.
Redmond, WA 98052
Tel: 425-497-0476
Fax: 425-497-0496

York, PA
**Apex Tool Group
Sales & Service Center**
3990 East Market Street
York, PA 17402
Tel: 717-755-2933
Fax: 717-757-5063

Canada
**Apex Tool Group
Sales & Service Center**
5925 McLaughlin Road
Mississauga, Ont. L5R 1B8
Canada
Tel: 905-501-4785
Fax: 905-501-4786

Germany
Cooper Power Tools
GmbH & Co. OHG
a company of
Apex Tool Group, LLC
Industriestraße 1
73463 Westhausen
Germany
Tel: +49 (0) 73 63 81 0
Fax: +49 (0) 73 63 81 222

England
Cooper Power Tools
GmbH & Co. OHG
a company of
Apex Tool Group, LLC
C/O Spline Gauges
Piccadilly, Tamworth
Staffordshire B78 2ER
United Kingdom
Tel: +44 1827 8741 28
Fax: +44 1827 8741 28

France
Cooper Power Tools SAS
a company of
Apex Tool Group, LLC
25 rue Maurice Chevalier
77330 Ozoir-La-Ferrière
France
Tel: +33 1 6443 2200
Fax: +33 1 6443 1717

China
Cooper (China) Co., Ltd.
a company of
Apex Tool Group, LLC
955 Sheng Li Road,
Heqing Pudong, Shanghai
China 201201
Tel: +86-21-28994176
Fax: +86-21-51118446

Mexico
Cooper Tools
de México S.A. de C.V.
a company of
Apex Tool Group, LLC
Vialidad El Pueblito #103
Parque Industrial Querétaro
Querétaro, QRO 76220
Mexico
Tel: +52 (442) 211-3800
Fax: +52 (442) 103-0443

Brazil
Cooper Tools Industrial Ltda.
a company of
Apex Tool Group, LLC
Av. Liberdade, 4055
Zona Industrial - Iporanga
SP Brazil
Tel: +55 15 2383929
Fax: +55 15 2383260

Hungary
Cooper Tools Hungaria Kft.
a company of
Apex Tool Group, LLC
Berkenyefa sor 7
Pf: 640
9027 Györ
Hungary
Tel: +36 96 66 1383
Fax: +36 96 66 1135

Apex Tool Group, LLC
1000 Lufkin Road
Apex, NC 27539
Phone: 919-387-0099
Fax: 919-387-2614
www.apextoolgroup.com

Cleco®